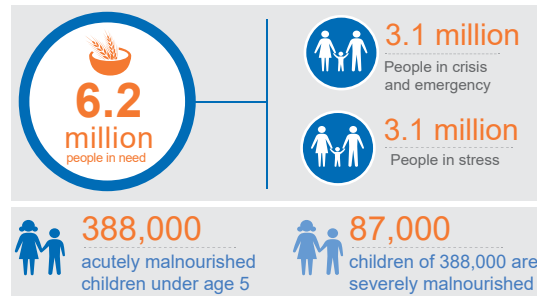


Somalia: Humanitarian Snapshot (as of 7 September 2017)

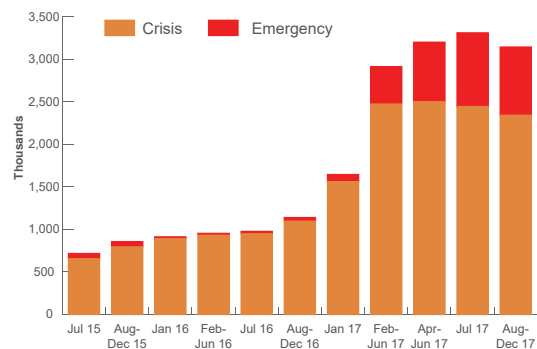
The threat of famine persists in Somalia following several consecutive failed rainy seasons. According to the FAO-managed FSNAU *post-Gu* assessment issued on 31 August, an estimated 6.2 million people are in need of humanitarian assistance. Thanks to generous contributions of more than US\$1 billion for humanitarian action since the beginning of the year, operational agencies are reaching over 3 million people per month and famine has been averted so far. A number of clusters are nevertheless falling short of their targets and additional resources are required to sustain current efforts to prevent famine.



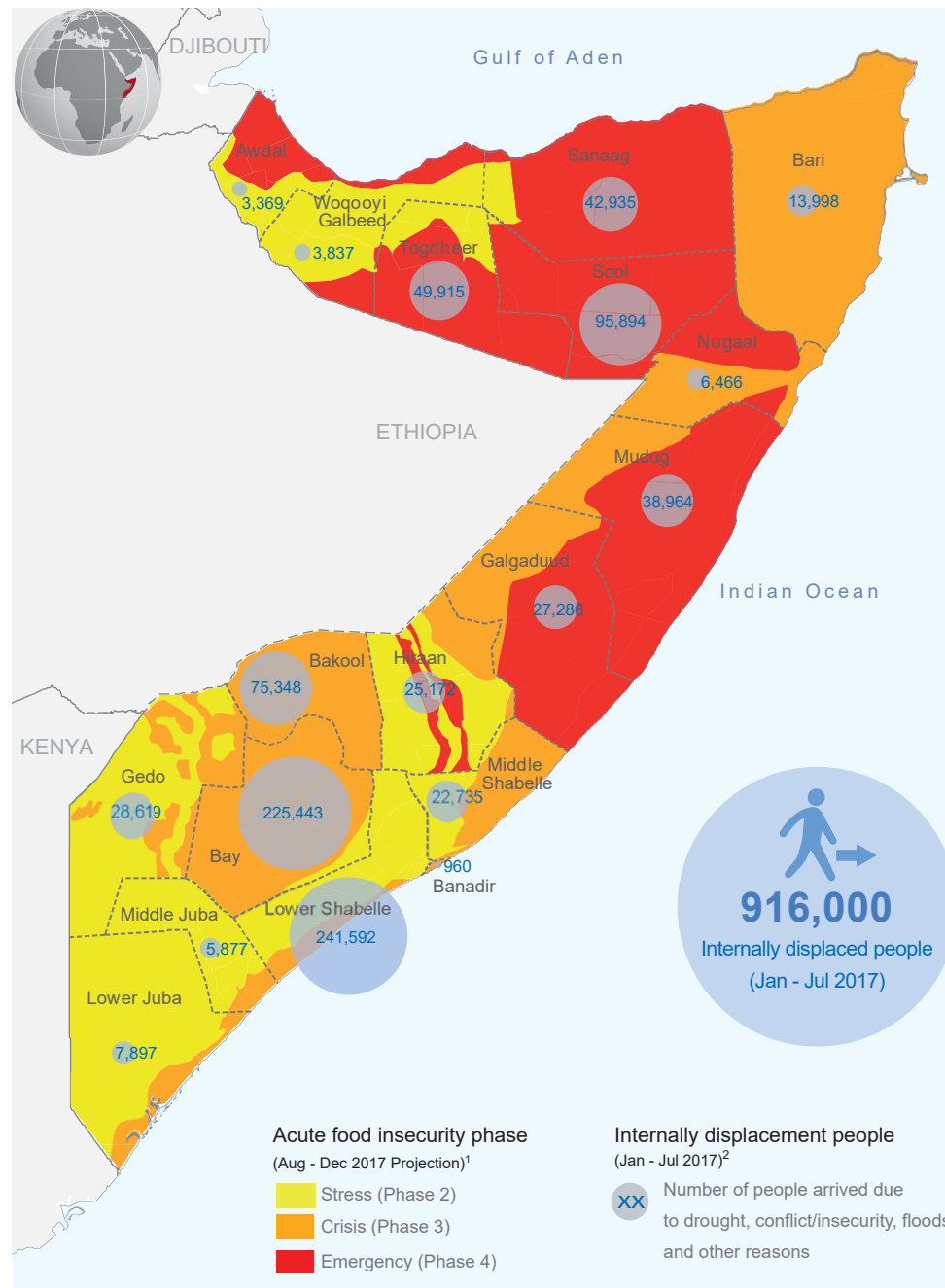
FOOD SECURITY SITUATION

The *post-Gu* 2017 assessment shows a slight improvement in food security compared to the April - June projections, primarily as a result of sustained humanitarian assistance and improved localized rains in some areas.

Trend in number of people in crisis (IPC 3) and emergency (IPC 4)



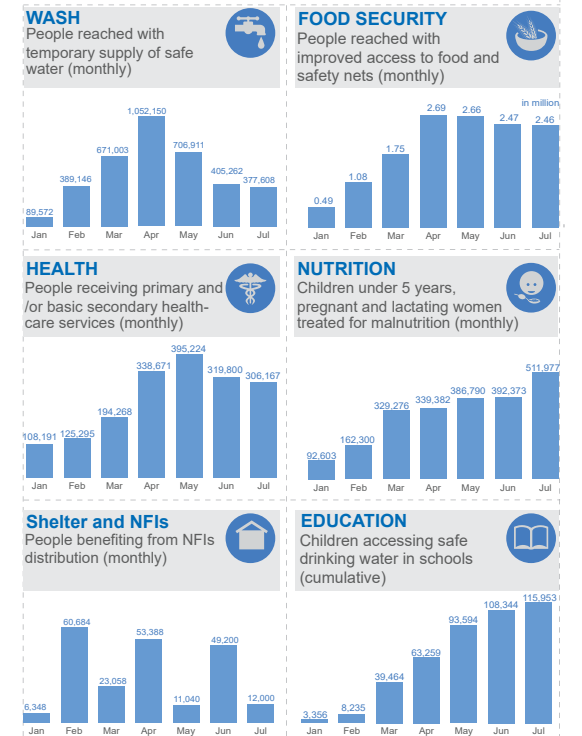
For more details on FAO-FSNAU assessments please see this link: <http://www.fsnau.org/>



HUMANITARIAN RESPONSE

Humanitarians are reaching over 3 million people monthly with life-saving assistance and livelihoods support, the majority in the form of cash and vouchers. However, some clusters have scaled back due to funding shortfalls.

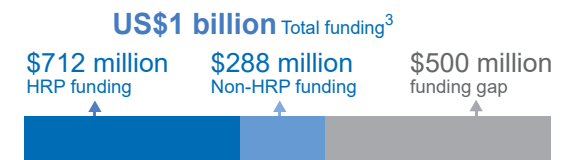
Response by cluster (January - July 2017)



For more details please see the humanitarian dashboard in this link: <https://tinyurl.com/y7schn5>

FUNDING

Humanitarian Response Plan (HRP) request **US\$1.5 billion** to reach **5.5 million people** with life-saving assistance.



The boundaries and names shown and the designations used on this map do not imply official endorsement or acceptance by the United Nations.

Creation date: 7 September 2017 Sources: 1. FAO-FSNAU and FEWS NET, 2. UNHCR -PRMN, 3. Financial Tracking Service (FTS) - 7 September 2017 Feedback: ochasomalia@un.org www.unocha.org www.reliefweb.int