



HIGHLIGHTS

In Darfur, intermittent conflict and inter-communal tensions continue to severely impact civilians, notably women and children, and also prevent the return of displaced people to their areas of origin. While in some areas access has improved, access to other areas, including where there is active conflict, remains restricted.

According to the 2016 Humanitarian Needs Overview, some **3.3 million** people are currently in need of humanitarian assistance in Darfur. In 2016, **97,481** people were newly displaced (and remain displaced) across Darfur, according to the UN and partners. Up to an additional **99,435** people were also reportedly displaced during the year, but the UN and partners have been unable to verify this figure due to access constraints in relevant locations. In addition, **39,647** people who were displaced in 2016 have reportedly returned, including **25,564** in Golo, Central Darfur, who were verified and assisted by WFP. The vast majority of displacement in 2016 was triggered by conflict in the Jebel Marra area. About 84,000 South Sudanese refugees arrived in Darfur in 2016, bringing the total number of refugees in the region to about 94,000 people.

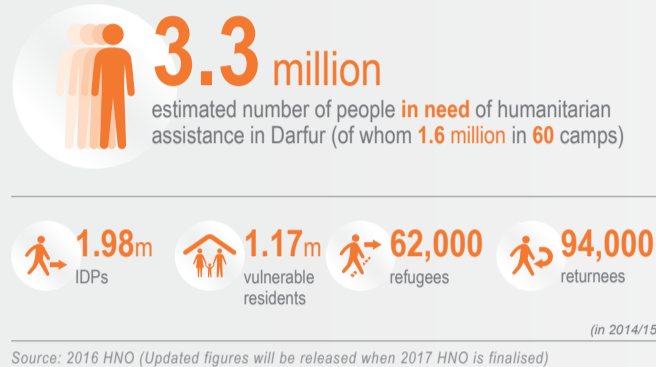
Since 2009, resources allocated to address humanitarian needs in Darfur have been insufficient, which, in addition to lack of access, has led to a drop in the number of aid workers. Prior to 2009, there were **17,700** national and international aid workers in Darfur. As of January 2017, there are **4,208** aid workers (97 per cent of whom are national staff) in international humanitarian organisations in Darfur.



Timeline

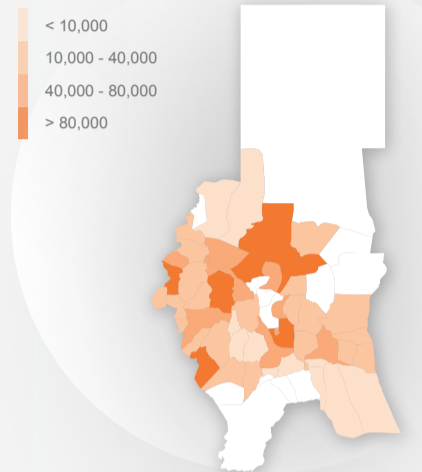


People in need



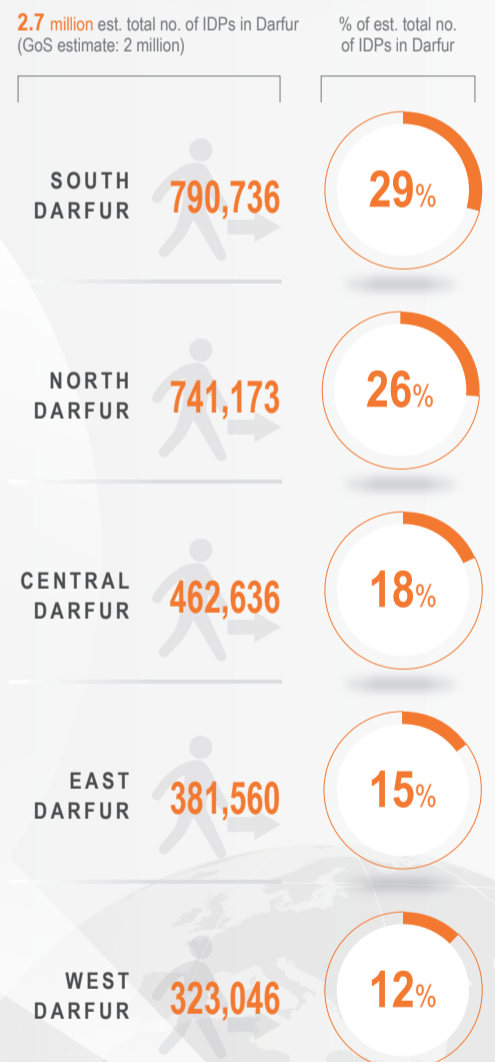
Estimated no. of IDPs by locality

Source: IASC and partners, Nov 2015



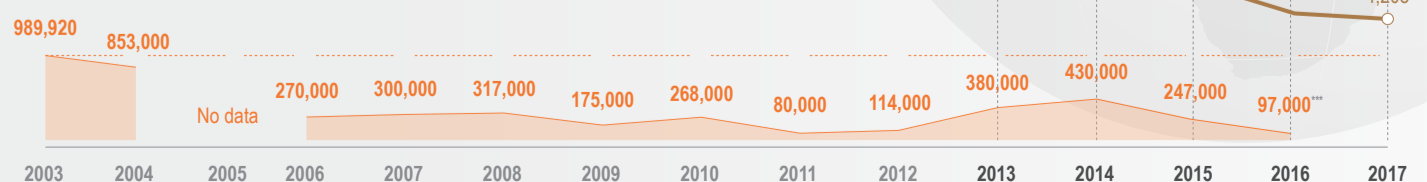
Estimated no. of IDPs by state

Source: IASC and partners, Dec 2016



No. of people newly displaced per year**

(including verified, unverified and returns)



*Reported returns during 2014 and 2015 include all reported returns, and differ from the total of 94,000 which refers to the number of returnees in need of humanitarian assistance. **Figures before 2011 include South Sudan. ***2016 figures indicate verified displacement, not including reported displacement/returns.