



## TURKANA SECONDARY DATA REVIEW AS AT MARCH 2014

### Introduction

This document is a baseline for humanitarian needs assessment in Turkana with an aim to provide information that would aid in decision making. The information presented has been gathered through a review of pre-crisis secondary data, studies and lessons learnt reports. Available indicator information is by Sub County, county and national (where there is no available sub-county/county information). This desk review is to help in the process of assessment planning for humanitarian needs assessment.

### Purpose of the Desk review

This desk review is not a comprehensive survey on food security, livelihoods, WASH, protection e.t.c nor is it an inter-agency needs assessment. It is a process in which a secondary literature and data has been used to uncover any relevant information of use and guidance for the preparation of the in-crisis primary data collection.

#### Content List

##### Summary

[Demography](#)

[Area profile](#)

[Vulnerable groups](#)

[Sector updates](#)

[Partners \(3W\)](#)

### Demography of Population

- Turkana County constitutes 2.2% of the national **population** ranked 18/47. 52% of the population are male while 48% are female [Table 1](#)
- The county shares 14.2% of the **national urban population** ranked 33/47 [CRA 2011](#)
- Lodwar town has the largest **urban population** taking 6% of the county's population, Kakuma 4% and Lokichogio 2%<sup>1</sup>
- It has a **population density** of 562.8 which is higher than the national population density of 401.1 per square kilometer, with 6.9 people in every km 2 see [Table 1](#)
- The **rate of poverty** (adult equivalent poverty head count) is 94.3% higher than the national rate of 45.9% and its ranked 47/47<sup>2</sup> [CRA 2011](#)
- The average **household size** in Turkana is 6.9, 1.6 higher than the national household size of 4.4. [Table 1](#).
- The county's **age distribution** is 46.0% between 0-14 years, 51.6% (15–64 yrs) and 2.4% are above 65 years old [CRA 2011](#) 12.88% of the population is **under the age of 5 years** and 29% are between the ages of **0-9 years**<sup>3</sup>
- It is estimated that the county's **deprived child population** is 75.81%.<sup>4</sup>
- Kenya has a gender index of 0.25% for 2012, and a **Human Development Index score** of 0.509 for 2011, placing it at 143 out of 187 countries. [SIGI, 2012](#)

<sup>1</sup> Data from Kenya county Fact sheet by CRA

<sup>2</sup> Basic Report on Well-being in Kenya (KIHBS 2005)

<sup>3</sup> Basic Report on Well-being in Kenya (KIHBS 2005)/ 2009 population and housing census

<sup>4</sup> SPME CDI by county



- In 2011, the **national birth rate** per 1,000 was 37.6 ([World Bank, 2011](#)), and the **annual population growth** rate was 2.67% (World bank, 2012)

County	# Households	Area in Sq.Km	Population Density	Male	Female	Total Population
Turkana ***	123,191	1,520.00	562.8	445,069	410,330	855,399
Kenya	8,767,104	96,252.0	401.1	19,192,458	19,417,639	38,610,097

Table 1 Population statistics Turkana (Source: KNBS 2012, Source 2009 Census, \*\*\* CRA 2011)<sup>5</sup>

## Area Profile

### Geography, climate and economy

- The county borders Garissa to the North, Isiolo to the NorthWest, Lamu to the Northeast, Kilifi to the Southeast, Taita Taveta to the South and Kitui to the West [CRA 2011](#)
- The county has 6 **sub counties** namely Turkana North, Turkana West, Turkana Central, Loima, Turkana South and Turkana East [CRA 2011](#)
- The main **economic activity** is livestock farming which is considered as a stock in trade in Turkana and wealth. There is fair level of basket weaving and Fish trade [CRA 2011](#).  
The county has **oil deposits** discovered in Ngamia 1 by Tillow oil, the findings could bring both blessings (revenue) and curses (conflict) within and outside the county [CRA 2011](#).
- The county has warm and hot climate, unreliable **Annual Rainfall** ranging between 300mm and 450mm per annum [CRA 2011](#)

<sup>5</sup> <http://knbs.or.ke/countydata.php>

- The **gross national income** per capita was \$820 in 2010. [World Bank, 2013](#)
- Kenya's **inflation rate** stood at 4.45% in February 2013 [Trading Economics](#)

### Socio-cultural characteristics

- The county is inhabited by these **ethnic groups** Pokots and Tugens in the south and Samburus and Boranas to the East [CRECO 2012](#)
- **Cattle rustling** is prevalent during initiation rites of passage when young men raid for livestock [CRECO 2012](#)

### Governance and coordination

- The county is served by **magistrates' courts** based in Lodwar. Appeals to high court are handled by **High court** in Kitale. Some conflicts are usually resolved through **self-help** means [CRECO 2012](#)
- There are 2 **local authorities**; Municipal council of Lodwar and county council of Turkana. Lodwar town is the administrative unit<sup>6</sup>

### Vulnerable Groups

- Poor families who are below the **poverty line**<sup>7</sup>
- **Early girl child marriages and pregnancies** which limits them to access to education rights [FS 2013](#)
- Cultural and economic practices such as herding and migratory lifestyles blurred the existence of child labor<sup>8</sup>
- Children under the age of 5 years with high level of **malnutrition rates**<sup>9</sup>

<sup>6</sup> <http://www.myaspirantmyleader.com/2013-03-05-14-51-39/rift-valley-region/10-counties/65-turkana-county.html>

<sup>7</sup> Basic Report on Well-being in Kenya KIHBS 2005/06

<sup>8</sup> [http://www.ilo.org/wcmsp5/groups/public/---ed\\_norm/---ippec/documents/newsitem/wcms\\_233861.pdf](http://www.ilo.org/wcmsp5/groups/public/---ed_norm/---ippec/documents/newsitem/wcms_233861.pdf)



## Hazards and Historic Sources of Conflict

### Shocks and Hazards

- Hot, dry and unreliable rainfall pattern [CRECO 2012](#).
- The county is prone to **fermine/drought, conflict** and **floods**<sup>10</sup>
- Drying up and shrinking of Lake Turkana and creation of dams upstream by Ethiopia government which would affect fishing [CRECO 2012](#).
- Water logging on parts of Agro pastoral areas during rain seasons [SRA 2013](#)
- Locust invasion during planting seasons [SRA 2013](#)
- Turkana is classified as a high hazard probability (HHP) of Flood, Conflict and drought<sup>11</sup>

### Historic triggers/Sources of tentions

- Cycles of **cattle rustling** between communities in Turkana, neighbouring counties and across border [CRA 2011](#)
- Sever **water shortage** during dry seasons leads conflicts as households scumble for whats available [FS profile](#)
- Misuse of small arms increases pastoralists conflicts in Turkana<sup>12</sup>
- Ethnic conflicts over **natural resources** such as water an pasture [CRECO 2012](#)

### Security Issues

- Proliferation of **small arms** through its porours borders has had implications to conflicts [CRECO 2012](#).

## Livelihoods and Food Security

### Livelihoods

- Majority of the population are **pastoralist**, communities along lake Turkana do **fisheries** and another tiny portion practising **agro-pastoralism** see Figure 1

### Food Insecurity

- The county is known to be one of the food insecure places and its currently classified as “ (IPC Phase 2) (**stressed**) [FEWSNET](#)
- The following **Coping mechanisms** are employed; wild fruits, Charcoal burning, increased livestock sales and sharing of food, [FS 2013](#)

### Current factors affecting food security in the area

- Conflict and insecurity in the county (cattle rustling and banditry).
- Poor road infrastructure.
- High food commodity prices in the county.
- Rainfall Performance
- Reduced livestock productivity
- Locust infestation
- Speriodic outbreak of livestock diseases
- High poverty levels
- Influx of livestock from neighbouring counties [FS 2013](#)

## Health and Nutrition

### Health

<sup>9</sup> Natural Disaster Hot spots case studies (World Bank)

<sup>10</sup> WESCOOD KAP survey 2013

<sup>11</sup> WESCOOD KAP survey 2013

<sup>12</sup> Baseline Study for the Kenyan Side of the Karamoja Cluste

- 55.32% of the **hospitals** in the county are public and are government owned.<sup>13</sup> The ratio of **Doctor to population** is 1:52,434 [CRA 2011](#)
- 9 people of every 10,000 population in Turkana have **TB** lower than the national count of 39 ranked 5/47 see Table 2
- 8.9% of the population are **HIV + ante- natal care** patients ranked 42/47 and 3% higher than the national population on care see [Table 2](#)
- The **HIV prevalence** in the county is 6.2% higher than the national HIV prevalence of 6.1%.<sup>14</sup>
- 54% **fully immunized** children (0 – 60 months) is below the average national fully immunized population of 83.0%<sup>15</sup>.
- National **life expectancy** at birth is 57.5 for males and 56.3 for females ([World bank, 2012](#))
- The **national maternal mortality** ratio per 100,000 360 deaths/100,000 live births in 2010 [WHO](#), 2010

Health coverage	Turkana	Kenya *
<b>Malaria (as % of all 1st outpatient visits)</b>	31.2 (22)	27.7
<b>TB in every 10,000 people (% 2009/10)</b>	9 (5)	23
<b>HIV+ ante-natal care clients (% 2010)</b>	8.9 (42)	5.9
<b>Delivered in a health centre</b>	6.9 (46)	37.5
<b>Qualified medical assistant during birth</b>	6.9 (46)	37.6

<sup>13</sup> Health facility Master List 2012

<sup>14</sup> Basic report on Well-being in Kenya KIHBS 2005/06

<sup>15</sup> District Information Health Systems (DHIS) 2012

<b>Had all vaccinations</b>	66.7 (36)	75
<b>Stunting (6-60 months)</b>	65.8 (16)	59.8

**Table 2 Health coverage indicators by county (CRA, 2011)**

Figures shown are percentage of population, figure in brackets indicates the rank compared across all 47 counties. \* indicates Kenya county average

### Morbidity and mortality

- The most prevalent condition is malnutrition [CRA 2011](#)
- The infant mortality rate is 60 in every 1000 and 12 in every 1000 under five [CRA 2011](#)
- **Infant mortality rate** is 60/1000/ day while the rate of under 5 **mortality rate** is 12/1000/day<sup>16</sup>.

### Nutrition

- **Global Acute Malnutrition** of 17.2% and 16.5% in Central and South Turkana classified as critical and 9.7% in Turkana West classified as poor. Moderate **Severe Acute Malnutrition** of 3.9%, 2.7% and 2.0% in Central, South and west Turkana respectively as at July 2013<sup>17</sup>
- 22% and 18.3% of children have medium **stunting** growth in Central and West Turkana, high stunting 30.2% in Turkana South<sup>18</sup>

### WASH

#### Access to water

- 43.7% of the population have **access to safe water**, 10.4% lower than national access to safe water<sup>19</sup>

<sup>16</sup> <http://www.myaspirantmyleader.com/10-counties/65-turkana-county.html>

<sup>17</sup> Nutrition SMART survey summary 2013

<sup>18</sup> Nutrition SMART survey summary 2013

- Turkana has a **water poverty index** of 43.5 with less than 20% of the population having access to 20 litres per person per day<sup>20</sup>
- Water is mainly sourced from **Lake Turkana, Kerio valley, Turkwell and Sugita River**. Some of these sources are seasonal and communities also get water from **dams, boreholes and wells** which are not evenly distributed in the county [FS profile](#)
- The average **price of water** is 3-5 KES per 20 litre jerican, households access water from a **distance** of 1.3-3.5Kms one way and the water **waiting time** is 30 minutes [SRA 2013](#)

### Sanitation and hygiene

- There is **improved sanitation** in 17.8% households 70% way below the national rate of 87.8% see Table 3
- The county has a **sanitation poverty index** of 59.1 ranked at the top most and a **hygiene poverty index** of 66.2<sup>21</sup>
- Nomadic pastoralist of life had led to **little sanitation** demand, hence little latrine coverage. 71.3% defecate in bushes while 28.7% own latrines<sup>22</sup>
- 74.3% of households have **improved source of drinking water** ranked 46/47, 7.8% above the national rate of 66.5% see Table 3

	Turkana	Kenya*
<b>Improved water (% households 2009)</b>	74.3 (15)	66.5

<sup>19</sup> 2009 Kenya Population and Housing Census

<sup>20</sup> WESCOOD KAP survey 2013

<sup>21</sup> WESCOOD KAP survey 2013

<sup>22</sup> <http://www.afdb.org/fileadmin/uploads/afdb/Documents/Compliance-Review/PUBLIC%20CONSULTATION%20AND%20SOCIO%20ECONOMIC%20ANALYSIS%20OF%20LAKE%20TURKANA%20COMMUNUNITIES%20UPDATE%20VERSION.PDF>

<b>Improved sanitation (% households 2009)</b>	17.8 (46)	87.8
--	-----------	------

**Table 3 Access to improved water and sanitation by County (CRA, 2011)**

Figure shown are percentage of population, figure in brackets indicates the rank compared across all 47 counties. \* indicates Kenya county average

### Education

- The county has 202 **primary schools** and 19 **secondary schools**. The **ratio of Teacher to Pupil** in primary school is 1:51 and 1:27.7 in secondary schools [CRA 2011](#)
- Majority of the population 71.0% have **primary education**, 9.5% **Secondary education** see Table 4
- 18.1% of the county's population **can read and write** ranking the county at 46/47, 39.0% at the age of 15-18 years are **attending school** see Table 4
- School **drop outs** results from long distance to schools, children moving with their parents in search of food and pasture [FS 2013](#)
- Girls tend to **stay away from school** due to early marriages and early pregnancies [FS 2013](#)
- The **national literacy rate** for adults is 87.4% (90.6% for males, 84.2% for females), and the youth literacy rate is 92% (91.7% for males, 93.7% for females [World Bank, 2010](#))

	Turkana	Kenya
<b>Population with primary education (%)</b>	71.0 (13)	66.6
<b>Population with secondary education (%)</b>	9.5 (39)	12.7
<b>Can read &amp; write (10-14 months)</b>	18.1 (46)	66.4
<b>Attending School, 15-18 years</b>	39.0 (47)	70.9

**Table 4: County Education coverage (CRA, 2011)**

Figures shown are percentage of population, figure in brackets indicates the rank compared across all 47 counties. \* indicates Kenya county average



## Existing Partners (3W)

WHAT	WHO
WASH	UNICEF, GoK (MoE, DWO), Diocese of Lodwar (DoL), OXFAM, FAO, The Salvation Army, Practical Action, WRK, KRCS, WVK, IRC, LWF, VSF/G
NUTRITION	IRC, WVK, Merlin, DoL, Childfund, UNICEF, WRK, GoK(MoH, MoPHS), Amref, World Relief, OXFAM, WFP, EGPAF
AGRICULTURE & LIVESTOCK	GoK, MoLD, IOM, VSF-Belgium, UNDP, MOA/WB, FAO, World Relief, LWF, KRCS, OXFAM
FOOD AID	WFP / TRP / Child Fund, WVK, GoK (MOPHS, MOMS) Merlin, IRC, The Salvation Army, DoL, Child Fund, Don Bosco, KRCS, OXFAM, USADF, VSF, UNDP
HEALTH	MoPHs, MoH, IOM, EGPAF, Diocese of Lodwar (DoL), IRC, Amref, Merlin.
EDUCATION	GoK, UNICEF, KRCS WFP, MoWI, MoE, WVK.
Governance	Practical Action is carrying out Governance activities in: Turkwel, Kalokol, Loima, Central, and Kerio.
Disaster Risk Reduction	LWF is carrying out DRR activities in: Lokichoggio, Oropoi, and Kakuma. UNDP is carrying out activities in: Kakuma, Oropoi, Lokichoggio, through Kenya Drought Recovery Project.

Table 5: Turkana 3W, source: UNOCHA<sup>23</sup>

## Maps

<sup>23</sup>file:///C:/KIRA/KIRA%20migration%20to%20HR%20info/To%20Human%20resources%20website/Data/3W/KEN\_Turkana\_Interventions\_01March2013%20copy.pdf

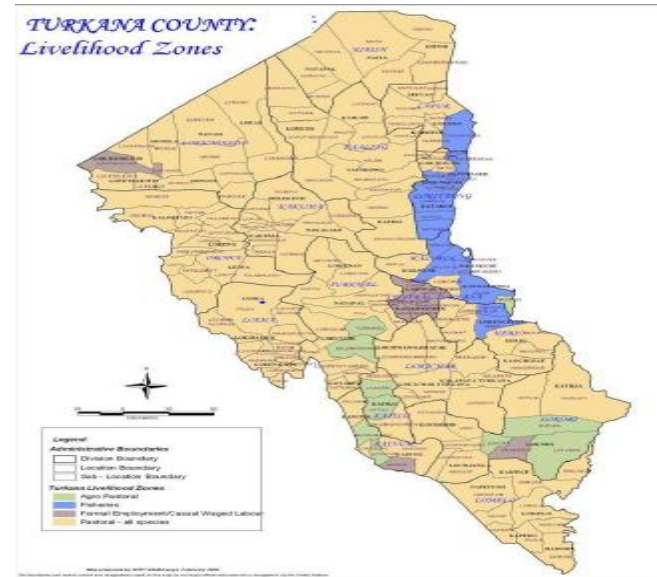


Figure 1 Turkana county livelihood Source: WFP/VAM, June 2005

## Key Background Resources

- <http://www.kenyafoodsecurity.org/images/stories/files/dps/rift/turkana.pdf>
- <http://www.fews.net/east-africa/kenia/food-security-outlook/fri-2014-01-31-mon-2014-06-30>
- <https://kenya.humanitarianresponse.info/local-themes/kira>
- <http://www.geohive.com/cntry/kenya.aspx>
- <http://www.childinfo.org/>



# KIRA

KENYA INTER AGENCY RAPID ASSESSMENT



<http://www.katibasasa.org/wp-content/uploads/2012/05/CRECO-Peace-bk-May.pdf>

<https://sites.google.com/site/kenyainitialrapidassessment/contacts>

<http://statistics.knbs.or.ke/nada/index.php/catalog/36/datafile/F22/V682>

[http://reliefweb.int/maps?f\[0\]=field\\_primary\\_country%3A131](http://reliefweb.int/maps?f[0]=field_primary_country%3A131)

<http://www.slideshare.net/Abetum/kenya-county-factsheetsdec2011>

<http://www.myaspirantmyleader.com/2013-03-05-14-51-39/rift-valley-region/10-counties/65-turkana-county.htm>

<http://www.majidata.go.ke/definition.php?MID=MTI=&DefID=2>

**Methodology** – This desk review presents estimations of scale and severity. It aims to inform decision making for preparedness and emergency response and intends to complement and integrate assessment-related data from other agencies. Feedback to improve the SDR is welcome (ondiek@un.org)

**Disclaimer** – Information provided is provisional as it has not been possible to independently verify field reports. As this report covers highly dynamic subject, utility of the information may decrease with time.