

SITUATION OVERVIEW

Yemen is the world's worst humanitarian crisis and levels of humanitarian needs are staggering. Eighty per cent of the population – 24.1 million people – need some form of humanitarian assistance. A total of 230 out of Yemen's 333 districts (69 per cent) are at risk of famine. According to WHO, more than 862,607 suspected cholera cases were reported from 1 January to end of December 2019. An estimated 3.34 million people are internally displaced across the country; another 1 million have returned to their homes.

Despite a difficult operating environment, since the beginning of 2019, 208 international and national humanitarian organisations continue to work across Yemen, responding to the most acute needs. Together, they delivered some form of humanitarian assistance to over 13.7 million people since January 2019, of whom an average of 11.7 million people received emergency food assistance. Over 10 million people, including 4.5 million children, were reached with hygiene kits, household water treatment supplies and awareness by Cholera Rapid Response Teams in cholera priority areas.

KEY FIGURES

Population Figures

30.5M estimated population

24.1M people in need in 2019 **21.4M** people targeted in 2019

Source: 2019 YHRP

Famine Risk Areas

230 districts out of the 333 districts (69 per cent) in Yemen are at risk of famine.

104 districts with the highest needs severity scores **45** districts with IPC phase 4 with pockets of IPC phase 5 (catastrophe)

Source: Clusters

Cholera Outbreaks

2.3M suspected cases **3.8k** related deaths

28% of the cases are children less than 5 years

21 out of 22 governorates (322 out of 333 districts) have been affected (from 27 Apr 2017 to 31 Dec 2019).

Source: WHO

Population Movement

4.8M* displaced population

3.34M IDPs** **1.01M** IDPs returnees** **0.42M** Refugees & migrants

*This includes refugees & migrants
**This includes total number of people displaced by conflict and natural disasters.

Source: Yemen Central Statistical Organisation, Population Technical Working Group, Refugee and Migrant Multi-Sector.

Organisational Presence

208 Humanitarian organisations and partners were active in Yemen from January to December 2019

NINGO	INGO	UN
160	37	11

Source: Clusters (Jan - Dec 2019)

Emergency Food Assistance

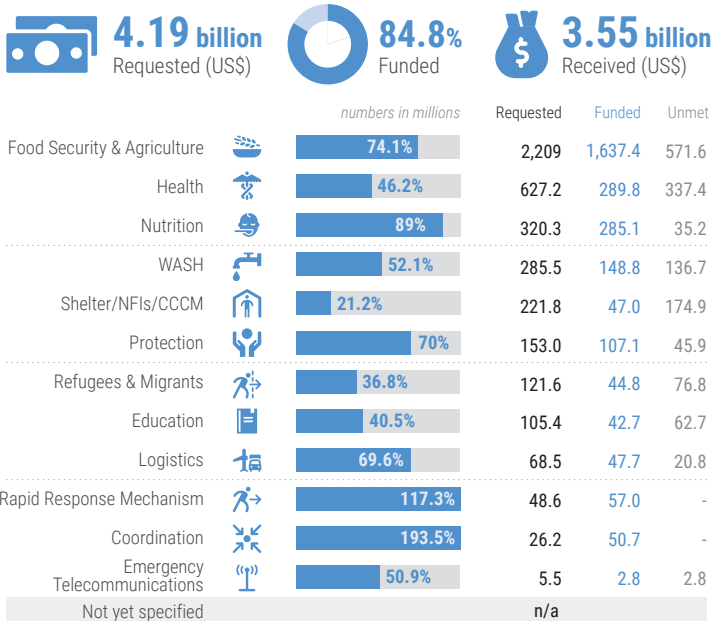
11.7M Average number of people directly assisted per month with some form of humanitarian support in all 22 governorates.

2.6M men **3M** women **3.1M** boys **3M** girls

Source: Food Security and Agriculture Cluster

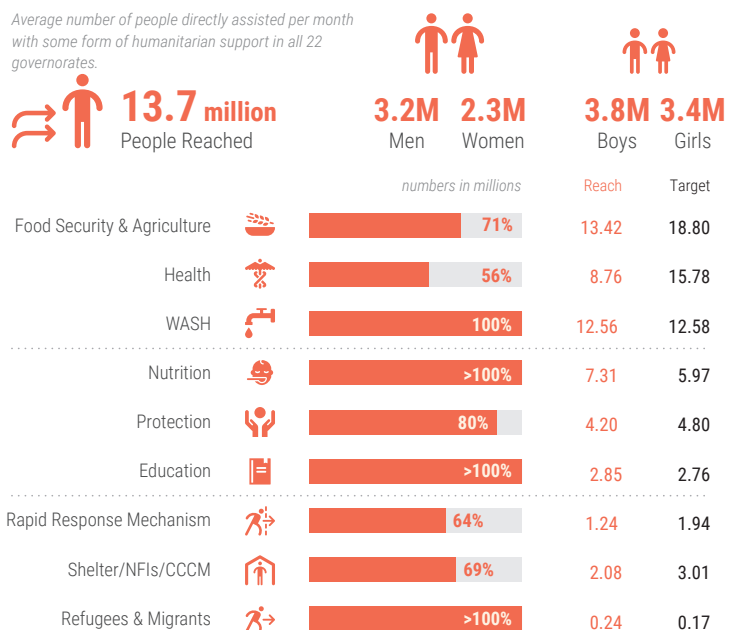
FUNDING: 2019 YHRP

as per Financial Tracking System (FTS) as of 04 March 2020



PEOPLE REACHED (Jan to Dec 2019)

Average number of people directly assisted per month with some form of humanitarian support in all 22 governorates.



STRATEGIC OBJECTIVES



1

Helping millions of destitute Yemenis overcome hunger



2

Reducing outbreaks of cholera and infectious diseases



3

Promoting the dignity of displaced families living in emergency and IDP settlements



4

Reducing the risk of displacement and violence against civilians and facilitating the recovery of people traumatized by the conflict



5

Preserving the capacity of public sector institutions to deliver life-saving basic services

Food Security and Agriculture

18.8 million

Overall monthly people targeted

71% reach/target



Reached by sex & age



13.4M Average people reached⁽¹⁾ (from Jan to Dec 2019)

Increase access to food for highly vulnerable families across the country and increase household incomes and rehabilitate food security assets in areas with high levels of food insecurity.

NEEDS

An estimated 20.1 million people (67 per cent of the population) are food insecure, with 10 million severely food insecure (categorized in emergency IPC phase 4). Of greatest concern out of those 10 million people are the 238,000 people in IPC Phase 5, necessitating urgent humanitarian assistance to save their lives and protect livelihoods. This is due to the escalation of the conflict, which in turn results in the disruption of imports, mass displacement, loss of income & livelihoods, disrupted market systems, high commodity prices, and the collapse of public services.

RESPONSE

From January to December 2019, Food Security and Agriculture Cluster partners provided monthly emergency food assistance (in-kind, cash transfers & voucher transfers) to an average of 11.7 M million people, and monthly conditional and season-specific cash transfers to a total of 1.6 million people. By the end of December a cumulative total of 3.1 million people benefited from livelihoods assistance (2.9 million people assisted with emergency agricultural, livestock & fishery kits, and around 150,700 people provided with longer-term livelihoods support).

For more information, contact: gordon.dudi@fao.org

YHRP MONITORING INDICATORS	TARGET TYPE	TARGET	REACHED	REACHED/TARGET
Number of individuals provided with emergency food assistance (in-kind, cash transfers and voucher transfers) on monthly basis	Individuals	12,301,748	11,673,830	95%
Number of individuals provided with emergency agricultural, livestock, and fishery kits	Individuals	7,999,994	2,919,566*	36%
Number of individuals benefitting from conditional and season specific cash transfers and employment in public works schemes	Individuals	4,500,000	1,622,395 **	36%
Number of individuals provided with longer term livelihoods support and assistance in establishing micro businesses	Individuals	2,000,020	150,687	8%

Nutrition

6 million

Overall monthly people targeted

>100% reach/target



Reached by sex & age



7.3M Average people reached (from Jan to Dec 2019)

Save lives by reducing the prevalence of acute malnutrition among children under five, pregnant and lactating women and other vulnerable population groups.

NEEDS

An estimated 7.4 million people need nutrition assistance, of whom 3.2 million people require treatment for acute malnutrition, including 2.1 million children under 5 and 1.1 million pregnant and lactating women (PLW). A total of 2.4 million PLW and caretakers of children aged 0-23 months require infant and young child feeding counselling. Around 2 million people, including 0.8 million children under two years and 1.2 million PLW, need blanket supplementary feeding. Partners face many challenges, including bureaucratic and administrative impediments, non-payment of salaries to health workers, access constraints and movement restrictions impeding project monitoring in some areas.

RESPONSE

In 2019, 356,181 children with severe acute malnutrition (SAM), 639,794 children with moderate acute malnutrition (MAM) and 645,608 Pregnant and lactating women (PLW) with acute malnutrition were admitted for treatment. 2,904,273 health education for mothers/caregivers of infant children aged 0-23 months. 838,788 children aged 6-23 months and 898,306 pregnant and lactating women were reached with Blanket Supplementary Feeding programmes.

For more information, contact: imanyama@unicef.org

YHRP MONITORING INDICATORS	TARGET TYPE	TARGET	REACHED	REACHED/TARGET
Number of boys and girls aged 6-59 months admitted for SAM treatment without complications	Children	285,985	343,875	100%
Number of children under five years with moderate acute malnutrition newly admitted for treatment in TSFPS, MTS..etc	Children	937,890	639,794	68%

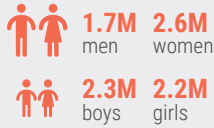
¹This includes monthly emergency food assistance, conditional and season specific cash transfer and longer-term livelihoods support.

*An average monthly reach.

** The number of people reached is cumulative and represents the actual number of people reached through conditional cash/cash for work programs in 2019. The aim of conditional cash/ cash for work programmes are i) provide short term income opportunities and increase consumption of goods; and (ii) build or repair community assets and public infrastructure that are vital for sustaining the livelihoods of a community. These activities are not directed to the same household for a whole year, each activity has a different duration ranging from 1 - 3 months based on community preferences, season, type of work, gender etc

15.8 million
Overall monthly people targeted
56%
reach/target


Reached by sex & age


8.8M
Overall people reached⁽¹⁾
(from Jan to Dec 2019)

 For more information, contact: khanmu@who.int



Improve access to primary, secondary and tertiary health care to ensure that health facilities are able to respond to epidemics and outbreaks, restore functionality of closed and damaged hospitals in priority districts.

NEEDS

There is a need to support the surveillance system while ensuring access to all levels of care. Referral systems need to be supported to save lives. Women and children need life-saving health services, including immunization. The health workforce needs capacity building and incentive payments while health facilities require repair and uninterrupted stocks of medical supplies. Challenges in the delivery of health care services arise from disrupted health systems, inadequate number of qualified health workers, restriction of movement, delays in signing sub-agreements and delays facing the importation of medicines and medical supplies.

RESPONSE

Health Cluster partners have supported 3,112 health facilities; provided around 17.5 million medical consultations and around 0.7 M consultations for IDPs. 574,000 children under the age of one year received Penta 3 vaccine while 466,000 deliveries were assisted by skilled birth attendants. Additionally, 105,000 trauma cases were treated, and 13,000 mental health consultations were provided by the health workers. 1.5 million women received antenatal care. More than 15,000 health staff trained.

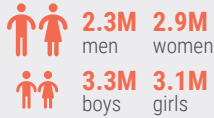
YHRP MONITORING INDICATORS	TARGET TYPE	TARGET	REACHED	REACHED/TARGET
Number of medical consultations conducted	Individuals	15,776,274	17,521,989	>100% 
Number of children under one year received penta 3	Children	488,906	574,008	>100% 



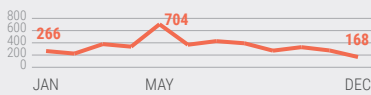
Water, Sanitation and Hygiene

12.6 million
Overall monthly people targeted
100%
reach/target


Reached by sex & age



People reached with safe water through water trucking (in thousands)


12.6M
Overall people reached
(from Jan to Dec 2019)

 For more information, contact: etuck@unicef.org


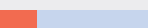
Reduce morbidity and mortality rates by providing emergency lifesaving WASH assistance to vulnerable population groups and restore and maintain sustainable water and sanitation systems to improve public health.

NEEDS

Since the start of 2019 cholera cases significantly increased, reaching over 2 million suspected cases across the country, over 20 per cent of whom are children. Displaced communities marginalised and poor communities, especially in urban, and conflict affected areas are most affected. The largest challenges hindering cholera response related to application of case definition and reporting, as well as all emergency WASH cholera projects in 2019 are currently blocked without signature by the authorities. Populations displaced from frontlines in Hajjah and Al Dhale'e over 50,000 families are in urgent need of minimum WASH services to prevent diseases and ensure protection and dignity.

RESPONSE

In 2019, 79 WASH partners have reached 12.6 million people across all 22 governorates through some form of WASH assistance. An estimated 11.2 million people have been reached through water support and 4 million through sanitation systems support, including rehabilitation, fuel support and solar installations in urban and rural areas. Emergency and life-saving assistance to support new IDPs and vulnerable populations and response to suspected cholera outbreaks have reached 5 million, and 540,000 people were reached through emergency water supply and sanitation provisions. Cholera Rapid Response Teams (RRTs) reached over 10 million individuals (that includes 4.5 million children) with emergency WASH response (hygiene items, household water treatment chemicals and awareness) in high-risk areas of AWD/cholera.

YHRP MONITORING INDICATORS	TARGET TYPE	TARGET	REACHED	REACHED/TARGET
Number of people benefited from provision, rehabilitation and maintenance of water supply systems for affected populations	Individuals	10,774,276	11,278,453	>100% 
Number of people benefited from access to adequate and appropriate hygiene items	Individuals	2,991,340	785,135	26% 

¹The cluster has reached 8.8 million people through 17.5 million medical consultations.

Protection

4.8 million

Overall monthly people targeted

88% reach/target



Reached by sex & age



4.2M

Average people reached (from Jan to Dec 2019)

For more information, contact: muradov@unhcr.org

Provide specialized assistance to people with specific protection needs and support community-based responses to protection needs, including community centres, programmes and protection networks.

NEEDS

Widespread violations of international humanitarian law and international human rights law by parties to the conflict pose an ongoing threat to the lives and safety of civilians, resulting in loss of life, displacement and destruction of infrastructure. The protracted conflict particularly affects women, children and people with specific needs, who are forced to resort to negative coping mechanisms as a means for survival. As grave violations of children's rights continue, support to affected children is critical, so is mine risk education. The significant increase in gender-based violence incidents requires multi-sectoral responses.

RESPONSE

Despite gaps in funding and serious operational constraints, by the end of 2019, Protection Cluster partners reached over 4.2 million people with life-saving protection services such as psychosocial support, legal assistance and protection, as well as multi-sectoral services for 378,644 women, men, girls and boys. Around 77,200 people benefited from cash assistance. Around 2 million children and community members received information on how to protect themselves against mines and explosive remnants of war. Community-based responses continue to be strengthened through community-based protection network volunteers, community protection initiatives and community centres serving the needs of IDPs and conflict-affected populations.

YHRP MONITORING INDICATORS	TARGET TYPE	TARGET	REACHED	REACHED/TARGET
Number of individuals benefiting from protection cash assistance	Individuals	115,356	378,644	>100%
Number of children and community members reached with life-saving mine risk education messaging	Individuals	1,684,113	2,086,486	>100%
Number of GBV beneficiaries reached with lifesaving GBV multi-sectoral services and cash support	Individuals	53,744	85,943	>100%

Shelter and Site Management

3 million

Overall monthly people targeted

69% reach/target



Reached by sex & age



2.1M

Average people reached (from Jan to Dec 2019)

For more information, contact: coord.yemen@sheltercluster.org

Provide safe, appropriate shelter and essential household items to displaced and highly vulnerable families and coordinate the delivery of a Minimum Service Package (MSP) in under-served emergency and IDP settlements.

NEEDS

6.7 million people are in need of Shelter and NFI assistance in 2019. The ongoing conflict and natural disasters since January 2019 forced over 383,000 individuals to experience displacement. The highest number of displacements were seen mainly in Hajjah, Al Hudaydah, Al Dhale'e and Taizz. Shelter remains a major humanitarian priority and most frequent issues cited by affected population are overcrowding, families unable to afford rent payments, high cost of shelter materials and lack of basic household items in the local market, and when available families do not have the means to purchase them and lack of lighting in their shelters.

RESPONSE

Shelter Cluster partners reached more than 2 million IDPs, returnees and vulnerable host community members. By end of December, 899,140 persons were assisted with NFIs, 257,075 with essential kits, 598,140 with cash assistance for rental subsidies, 31,088 received or supported with the rehabilitation of their transitional shelter kits, 358,826 were provided with winter assistance cash grants, 12,924 individuals were supported with rehabilitation or reconstruction grants to address damage to their homes, 5,659 individuals supported with livelihood grants and 5,142 with shelter upgrades.

YHRP MONITORING INDICATORS	TARGET TYPE	TARGET	REACHED	REACHED/TARGET
Number of people assisted through cash for rental subsidies	Individuals	597,764	598,617	100%
Number of IDP sites where the minimum service package (MSP) is provided	Sites	498	408	82%

Education

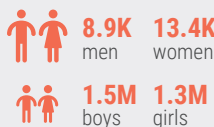
2.8 million

Overall monthly people targeted

>100% reach/target



Reached by sex & age



2.9M

Average people reached (from Jan to Dec 2019)

For more information, contact: pretaggi@unicef.org

Maintain basic education services, particularly in areas where schools are damaged, closed or unable to fully operate due to financial or other conflict-related constraints.

NEEDS

The provision of teacher's incentives was identified as the most critical need to ensure continuity of the education process. Other main needs are school rehabilitation, temporary learning spaces and alternative learning opportunities to provide access for education to affected children. School supplies, furniture, school meals and hygiene promotion are also needed.

RESPONSE

From January to December 2019, 461,584 children benefited from school repairs, including rehabilitation of WASH facilities in conflict-affected areas, helping children have a conducive school environment. Cluster partners supported 67,455 children through the provision of teacher training, while 504,224 students were provided with learning supplies. Hygiene kits were provided to 215,233 students, and 96,410 children were supported through the provision of alternative learning classrooms. 231,588 children were supported with school desks.

YHRP MONITORING INDICATORS	TARGET TYPE	TARGET	REACHED	REACHED/TARGET
Number of students benefitted from schools with partial damage rehabilitated (including WASH)	Children	295,409	252,579	86%
Number of children receiving school bags and essential learning materials	Children	1,200,012	501,253	42%

Refugee and Migrant Multi-Sector

169.8 thousand

Overall monthly people targeted

>100% reach/target



Reached by sex & age



126.8K men

49.9K women



44.4K boys

23.4K girls

244.6K

Average people reached (from Jan to Dec 2019)

For more information, contact: cabrol@unhcr.org, sbeccaletto@iom.int

Provide life-saving, multi-sectoral assistance to refugees, asylum-seekers and migrants with acute needs and facilitate durable solutions, including Assisted Spontaneous Return (ASR) and Voluntary Humanitarian Return (VHR).

NEEDS

In northern governorates, registration and renewal activities for refugees and asylum seekers have been functioning only 8 months; consequently, PoCs remain undocumented which puts them at risk and adds additional hardship to access services including education. Lack of access and comprehensive assessment prevent from implementing livelihoods activities, other services such as shelter and adequate durable solutions. IOM continues providing humanitarian assistance to stranded migrants in Sana'a and along the southern coast, responding to their immediate and protection needs such as food, water, NFIs.

RESPONSE

As of 31 December 2019, 11,220 vulnerable refugee and asylum seekers households received cash grants to meet their basic needs, in a context where employment opportunities and sources of incomes are scarce, and 35,634 refugees and asylum seekers received wash services. In addition, 5,518 PoCs benefitted from specialized protection services and 87,169 from primary health care. In 2019, UNHCR trained 737 officials on international laws and Yemeni legislations to address asylum-related issues. Through mobile teams in the southern coast and two mobile response points (Sana'a and Aden), IOM and partners provided protection and life-saving services to over 90,000 migrants.

YHRP MONITORING INDICATORS	TARGET TYPE	TARGET	REACHED	REACHED/TARGET
Number of refugees and migrants received in-kind or cash assistance	Individuals	38,559	42,315	>100%
Number of refugees and migrants provided with safe and dignified returnee transport	Individuals	13,000	5,255	60%

Rapid Response Mechanism

1.9 million

Overall monthly people targeted

64% reach/target



Reached by sex & age



0.3M men

0.3M women



0.3M boys

0.3M girls

1.2M

Average people reached (from Jan to Dec 2019)

For more information, contact: malah@unfpa.org, jramadan@unicef.org

Provide minimum package of immediate most critical lifesaving assistance for the newly displaced families on the move, in collective sites, hard to reach areas or stranded in the military frontlines due to man made, natural disasters or sudden urgent needs until the first line cluster response kicks in.

NEEDS

The mass displacement of populations has increased the need for basic food and non-food items to sustain minimum living standards. Such needs, if not immediately met, will further increase the vulnerability of the population and pose higher risks of exploitation, especially for women and girls. Access to the newly displaced people by armed conflict or natural disasters and the provision of life-saving assistance within 72 hours remain the main objectives of the RRM Cluster to adequately meet the basic needs of the affected populations.

RESPONSE

The Rapid Response Mechanism (RRM) is fully operational nationwide to meet the basic needs of newly displaced people by providing basic hygiene, female/transit and immediate ready ration kits to families within the first 72 hours of their displacement. This assistance, which covers basic needs for five to seven days, is provided on a no regret basis. It is followed by multi-purpose cash assistance based on a verification of need. The mechanism covers the 22 governorates and is implemented through 23 UN, LNGO and INGO partners on the ground. During the reporting period, the sector reached over 1.2 million beneficiaries with RRM kits and more than 188,000 individuals with cash assistance.

YHRP MONITORING INDICATORS	TARGET TYPE	TARGET	REACHED	REACHED/TARGET
Number of newly displaced people benefit from RRM	Individuals	1,199,307	1,238,559	>100%
Number of newly registered displaced people benefit from Multi-Purpose Cash Assistance (MPCA)	Individuals	479,876	247,336	52%

109

Benefited partners

18.5K

passengers transported by UN Air Services.

344

sea passengers transported between Djibouti and Aden.

9,128

metric tons transported by road, sea and air serving **38** humanitarian partners.

50,457

m3 cubic meters stored on behalf of **21** humanitarian partners.

For more information, contact: pablo.yuste@wfp.org

Support a coordinated logistics response and fill logistics gaps by facilitating access to common logistics services.

NEEDS

In Yemen, the humanitarian community faces several critical logistics challenges that hamper the delivery of relief items into and across the country. These include: access disruptions to many parts of the country for staff and humanitarian cargo; limited suitable in-country storage capacity in some key locations, including limited temperature-controlled storage; substantial bureaucratic processes; and limited international shipping options by sea and air.

RESPONSE

The Logistics Cluster supported humanitarian organisations with coordination and information management and facilitation of access to common logistics services, free-of-cost to the service user: cargo transport from Djibouti to Sana'a by air, and to Aden and Al Hudaydah by sea; inland road transport; common storage of relief item; fuel distribution to partners; sea passenger transport between Djibouti and Aden. UNHAS ensured continued air passenger transport services for the humanitarian community by operating 482 flight to and from Yemen and by establishing a new route between Aden and Mukalla.

In addition, WFP Bilateral Service Provision provided over 33M litres of fuel to health and WASH facilities.



Emergency Telecommunications

Services facilitated

5.5K

Number of helpdesk ticket received and addressed

11

Number of ETC hubs supported the Humanitarian Operation by location

For more information, contact: wali.noor@wfp.org

Support the humanitarian response in Yemen by providing humanitarian partners with reliable emergency telecommunications (ETC) services – including internet hubs, user help desk and technical support – and a reliable security telecommunication system

NEEDS

There is a need to continue supporting the critical communications needs of all responders involved in the humanitarian operation in Yemen.

RESPONSE

In 2019, the ETC provided critical Internet connectivity to more than 900 humanitarians in 11 hubs and resolved 5,500 calls across its helpdesks. The ETC conducted a technical mission to Al Mukalla and Al Mokha ahead of opening new ETC Internet hubs in the new UN hubs and guesthouses. The ETC conducted a technical assessment as requested by local partner, All Girls Foundation to establish an internet café for the use of women in Sana'a. The team also recruited a local IM associate and achieved an average satisfaction rate of 82% among all users of its services in Yemen. The ETC in Yemen has 41 partners.