

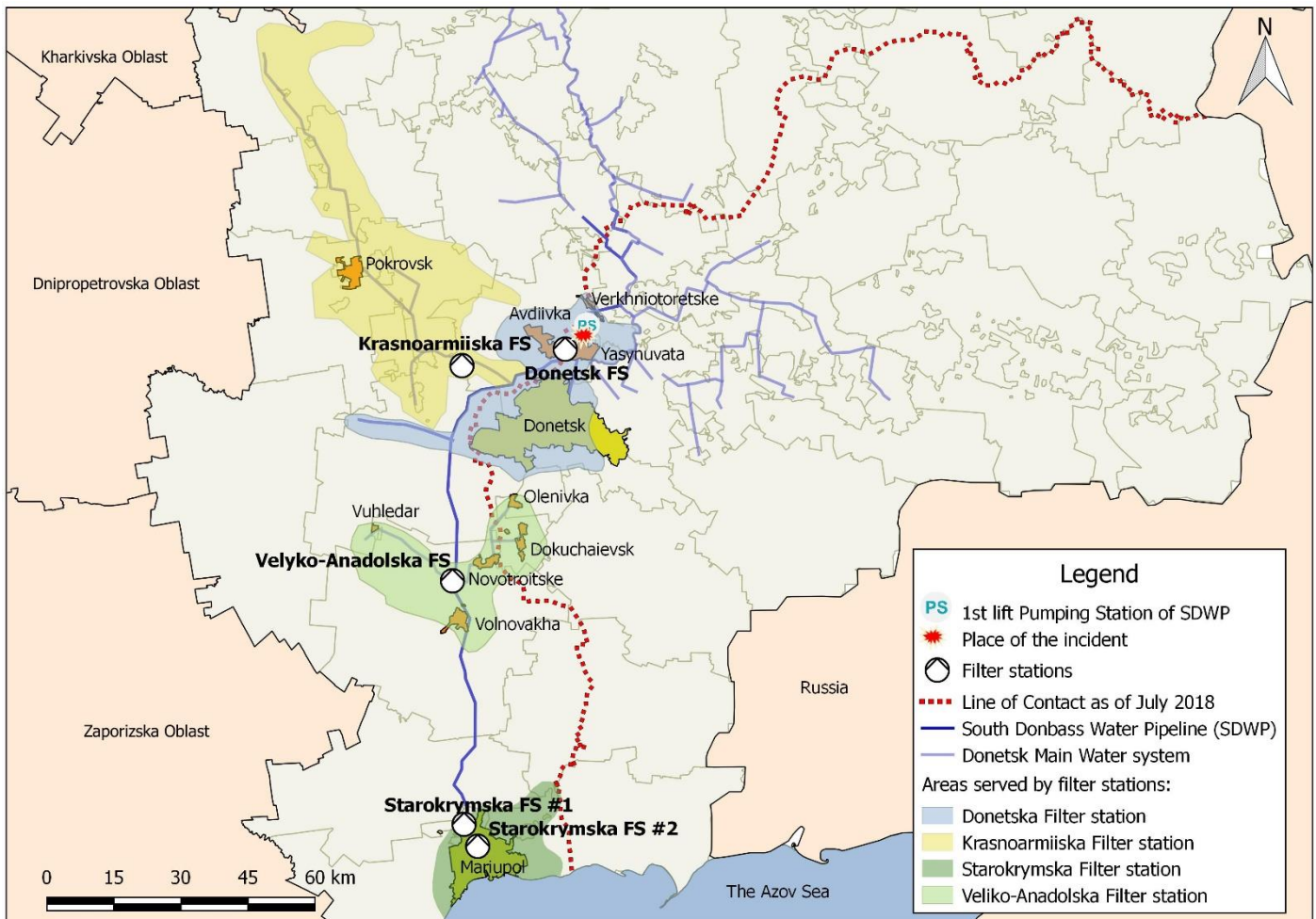
1st LIFT PUMPING STATION of SDWW SHELLED: ROOF DAMAGED

Voda Donbasa (VD) informed the WASH Cluster, that the territory of the 1st Lift Pumping Station of South Donbas Water Way (SDWW) came under intensive shelling during the night of Sunday to Monday 19th / 20th August 2018, between 20.30 and 22.30. This morning, Monday 20th March, staff of the Pumping Station (PS) checked the whole area and recorded new damage to the roof on the main building of the PS.

Overall, the 1st Lift PS of the South Donbas Water Pipeline supplies more than 1.2 million people, 68% of whom live in Government Controlled Areas and 32% in Non-Government Controlled Areas (NGCA). The station pumps raw water (which originally arrives via the SDD channel) to five filter stations¹:

- **Donetsk FS** (supplying 378,983 people);
- **Krasnoarmiiska FS** (267,403 people);
- **Velykoanadolska FS** (89,241 people); and
- **Starokrymska FS №1 and №2** (470,436 people in Mariupol).

The Pumping Station continues to operate operations as normal, however this new incident serves as a reminder of the vulnerability of water infrastructure, and the risks taken by staff who continue to work in locations along the front line.



¹ New population figures supplied by Voda Donbasa in June 2018