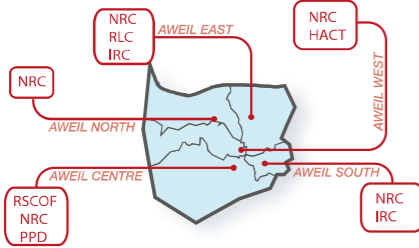
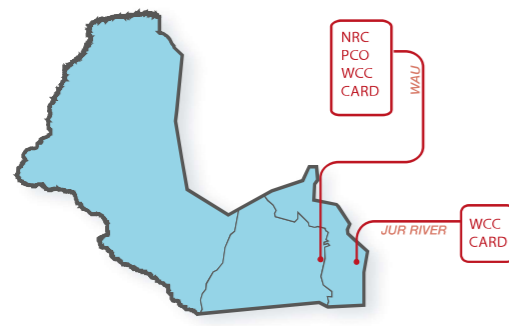




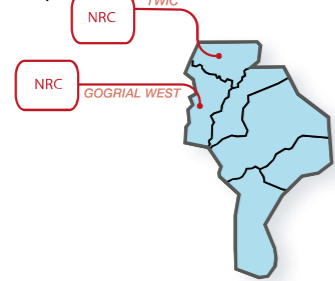
N. Bahr el Ghazal



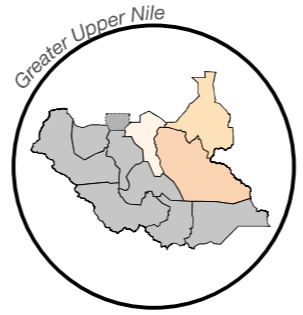
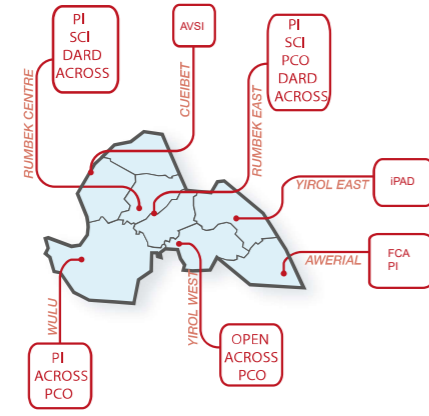
W. Bahr el Ghazal



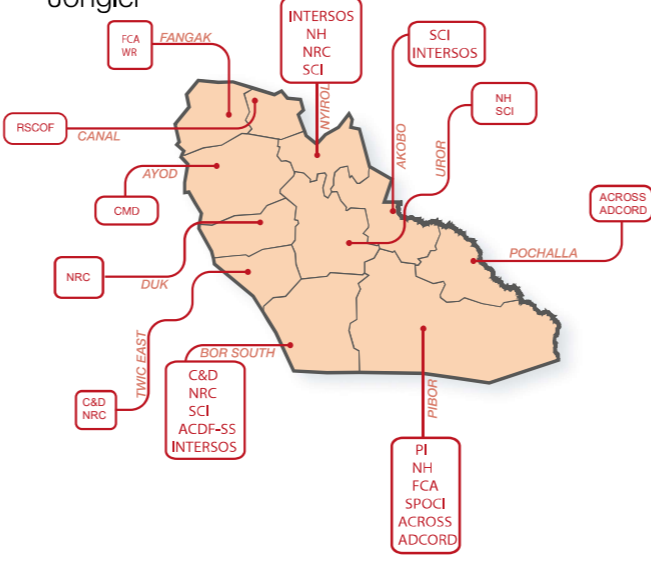
Warrap



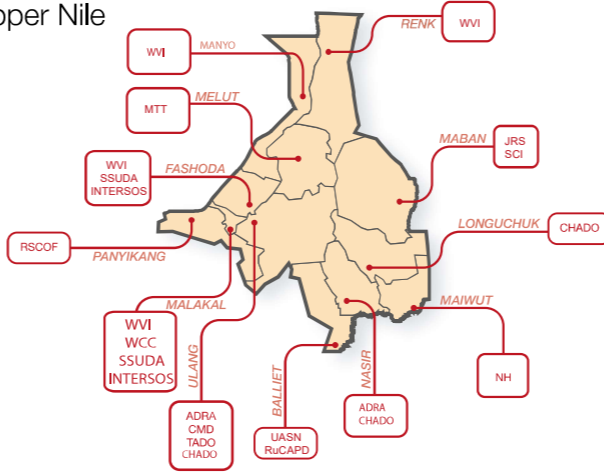
Lakes



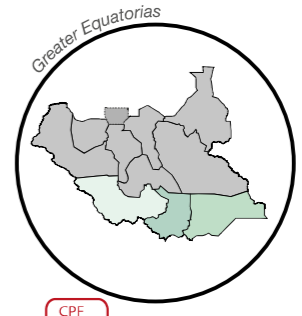
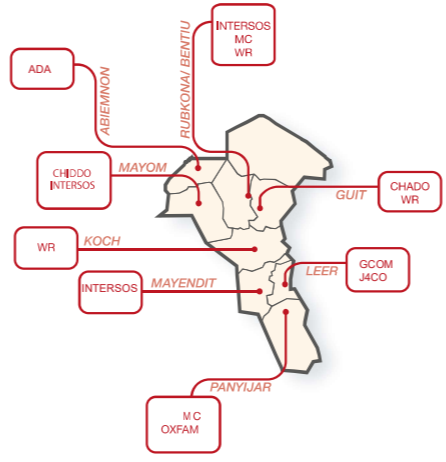
Jonglei



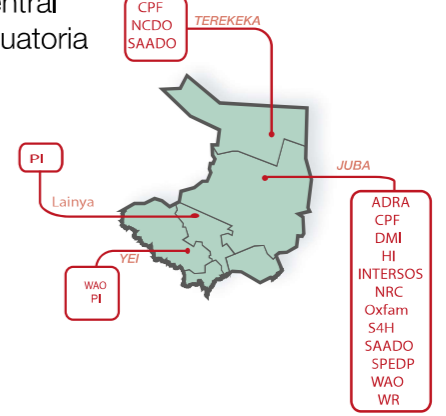
Upper Nile



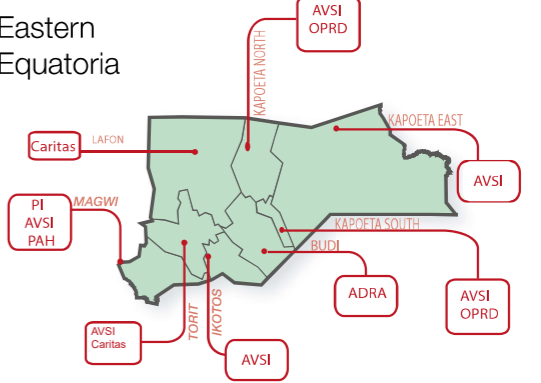
Unity



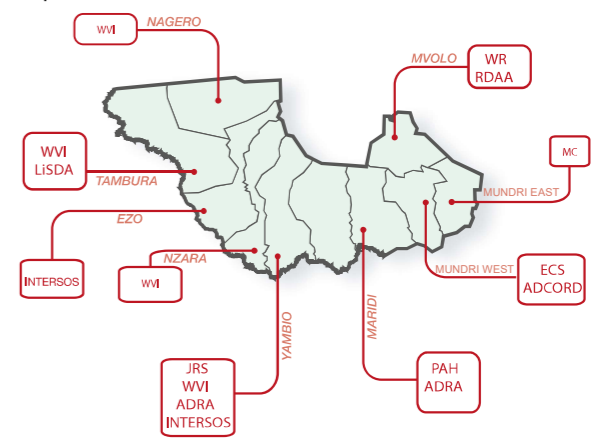
Central Equatoria



Eastern Equatoria



Western Equatoria



*The national Ministry of General Education and Instruction and State Education Ministries are key stakeholders for the implementation of Education Programmes across all states in South Sudan.

*UNICEF has presence and supports education across all states

*Windle Trust International Supports education in Unity State

• ADCORD (Advocates Coalition for Rights and Development) • ADRA (Adventist Development and Relief Agency) • ADA (Abyel Development Association) • ACROSS (ACROSS)-AVSI (Association of Volunteers in International Service) • C & D (Church and Development) • CARD (Community Aid for Relief and Development) • Caritas (Caritas International) • CHADO (Community Health and Development Organization) • CHIDDO (Child's Destiny and Development Organisation) • CMD (Christian Mission for Development) • CPF (Care Plus Foundation) • DARD (Disabled Association For Rehabilitation and Development) • DMI (Daughters of Mary Immaculate) • ECSS (Episcopal Church of South Sudan) • FCA (Finn Church Aid) • GCOM (Great Commission Operation Mercy) • HACT (Humanitarian Aid for Change and Transformation) • HI (Handicap International) • INTERSOS (INTEROS) • IPAD (Integrated Participatory Approach to Development) • JACO (Justice for Children Organization) • JRS (Jesuit Refugee Service) • LISDA (Life Skills Development Agency) • MC (Mercy Corps) • MTT (Mobile Theatre Team) • NCDO (National Christian Development Organization) • NH (Maiteser International) • NH (Nile Hope) • NRC (Norwegian Refugee Council) • OPEN (Organization for People's Empowerment and Needs) • Oxfam (Oxfam) • PAH (Polish Humanitarian Aid) • PCO (Peace Corps Organization - Sudan) • PI (Plan International) • RLC (Rescue Life of Children) • PPD (Partnership for Peace and Development) • RDAA (Rural Development Action Aid) • RCI (Rescue Life of Children) • RSCOF (Rev. Simon Christian Orphan Foundation) • SAADO (Smile Again Africa Development Organization) • SCI (Save the Children) • SPEDP (Support for Peace and Education Development Program) • SPOCI (Stop Poverty Communal Initiative) • SSUDA (South Sudan Development Agency) • TADO (Touch Africa Development Organisation) • UASN (United and Save the Nation) • WAO (Women Advancement Organization) • WCC (WAR CHILD Canada - South Sudan) • WTI (Windle Trust International) • WR (World Relief) • WVI (World Vision)