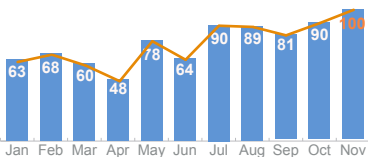




South Sudan: Humanitarian access situation snapshot - November 2016

In November, 100 humanitarian access incidents were reported in South Sudan, the highest number recorded in any one month since June 2015 (120). This follows the trend of increased access incidents reported in the second half of 2016. Since July, the monthly average has been 90 incidents, compared to an average of 63.5 per month during the first half of the year. The number of incidents in Central Equatoria substantially increased, with 40 reported in November compared to 25 in October. This was due to violence against personnel or assets (26) and interference in humanitarian action (12); with most incidents reported in Juba County (35). In Eastern Equatoria, however the number of incidents dropped from 10 in October to one in November.

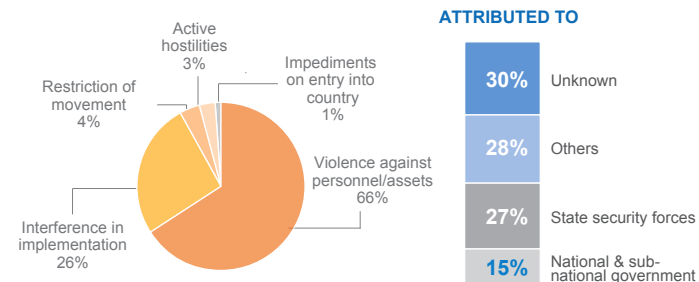
Reported access incidents in 2016



100 incidents reported in November 2016.

66% of the incidents involved violence against personnel and assets.

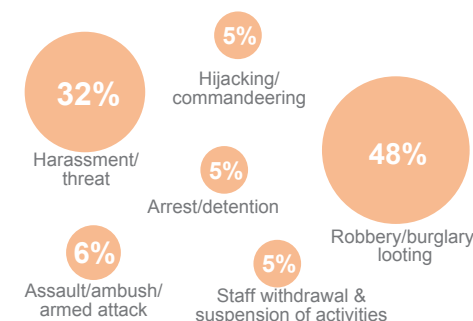
ACCESS CONSTRAINTS



IMPACT ON HUMANITARIAN RESPONSE

Of the 100 humanitarian access incidents recorded in November, 66 per cent involved violence against humanitarian personnel or assets, while 26 per cent involved interference in implementation. There was a slight increase in incidents involving violence from 63 in October to 66 in November, while those involving interference in implementation more than doubled from 12 in October to 26 in November. Two aid workers were expelled or deported by the authorities from the country during the month. Active hostilities continued to impact humanitarian operations with more than 40 aid workers relocated from Jonglei, Unity, Warrap and Western Equatoria. Six incidents involving looting of aid supplies were reported in Jonglei, Northern Bahr el Ghazal, Unity, Upper Nile and Western Equatoria. During the month, aid workers were denied access to areas outside of Yei and Wau towns, where tens of thousands of people are in need of assistance and protection.

Violence against personnel and assets



- 21 cases of threat/harassments
- 4 cases of assault/ambush/armed attack
- 3 cases of hijacking/commandeering
- 6 cases of looting
- 5 cases of staff withdrawal

