



(photo: R. Padilha/ISCG)

Over 32,535 persons have been verified through the RRRC-UNHCR Family Counting Exercise, as of 12 December. The Site Management Site Development Sector is engaging with all actors from GoB and the humanitarian community as well as donors to define a holistic and joint macroplanning strategy for the months to come. The third SMART Nutrition Survey in December 2018 confirmed that the malnutrition situation has further consolidated, but continues to require maintained efforts throughout 2019.

Key figures

900,998

refugees identified in camps*, at the household level via RRRC-UNHCR Family Counting Exercise and 34,172 registered before 31 Aug 2017.

Methodology is based on interviews with each family, collecting gender-and age-disaggregated statistics, geolocations and specific protection needs.

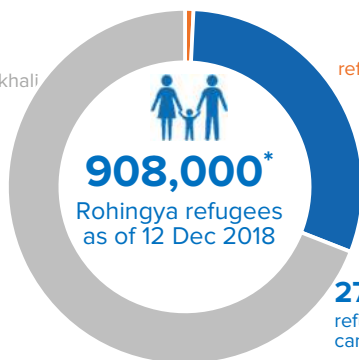
*Note: FC figures also identify 3,375 refugees outside of formal camp boundaries.

6,954

refugees (est) in host communities in Ukhiya/Teknaf Upazilas, per Needs and Population Monitoring (NPM). NPM estimates are based on interviews with key informants and triangulated through field observations and spontaneous community group discussions

627,000

refugees in Kutupalong Balukhali Expansion Site

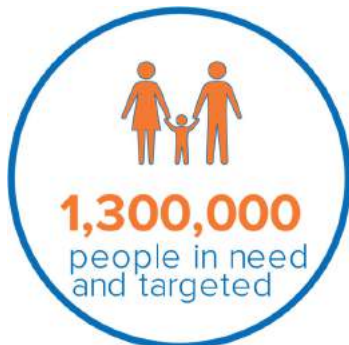


7,000

refugees in host communities

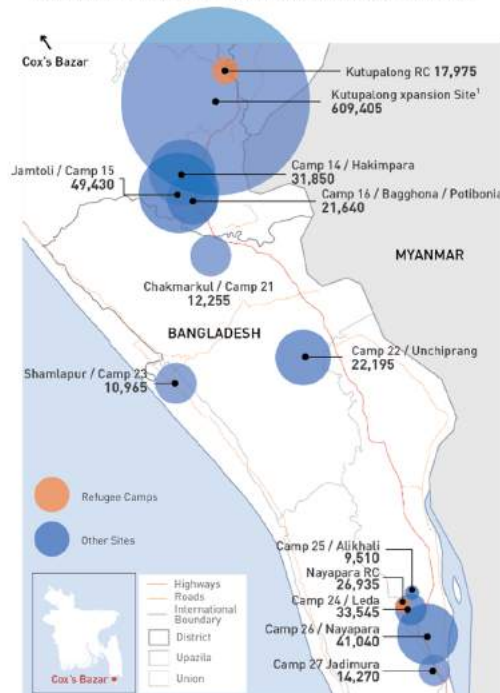
274,000
refugees in other camps

People in Need



Site locations and Population

REFUGEE SITES BY POPULATION AND LOCATION TYPE



The boundaries and names shown and the designations used on this map do not imply official endorsement or acceptance by the United Nations.


* as estimated in the 2018 Joint Response Plan, including approximately 330,000 Bangladeshis in host communities.


The boundaries and names shown and the designations used on this map do not imply official endorsement or acceptance by the United Nations.


Humanitarian Response (Since March 2018)


 **260,530**
 children and youth enrolled in learning opportunities in camps, settlements and host communities
Target: 530,000 children and youth

 **933,387**
 people receiving food assistance
Target: 959,000 people


 **33**
 primary health centre facilities


 **652,292**
 refugees benefitting from awareness raising and community-based protection mechanisms
Target: 103,389 people

 **218,765**
 girls and boys benefiting from psychosocial activities
Target: 400,000 boys and girls

 **92**
 safe, accessible entry points for GBV case management services
Target: 200 safe, accessible entry points


 **30,226**
 children 0-59 months with Severe Acute Malnutrition newly admitted for treatment
Target: 35,093 children


 **181,016**
 in-need households received Shelter Upgrade Kits.
Target: 211,000 households

 **45,474**
 individuals relocated due to risks of landslides/flooding, new arrivals and construction of critical infrastructures as of 7th November 2018.

 **870,676**
 of the target population benefiting from safe water to agreed standards and meeting demand for domestic purposes (15 litres per person per day)
Target: 1,052,495 people

 **1,000,406**
 of the target population have received a WASH hygiene kit and/or a top up kit and/or a voucher in the last three months
Target: 1,052,495 people

 **27,027m³**
 Total Cargo Handled (m³) on behalf of the humanitarian community since the start of the response

 **32**
 providing inter-sector information services and equipment

 **100,840**
 refugees and Bangladeshis received cash/in-kind livelihoods support
Target: 350,000

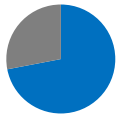
 **644**
 plots available in existing sites


JRP Funding (USD millions)

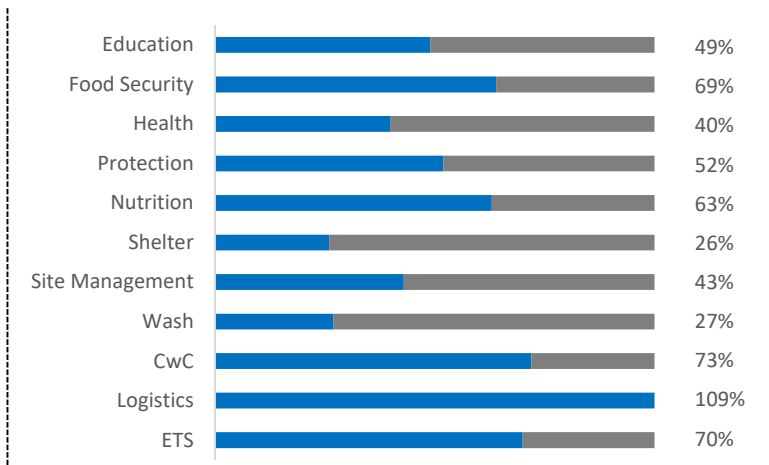
JOINT RESPONSE PLAN 2018

USD 950.8 M
 requested in the Joint Response Plan

72%
 funded (FTS as of 15 November 2018)



 **USD 68.9 M**
 in funding outside the JRP (including the Red Cross Movement and others)



JRP 2018 Strategic Objectives

 **1.** Provide timely lifesaving assistance and protection, as well as improve the living conditions of Rohingya refugees and affected host communities.

 **2.** Ensure well-being and dignity of Rohingya refugees and affected host communities.

 **3.** Support environmentally sustainable solutions.

 **4.** Confidence-building and resilience of Rohingya refugees and affected host communities.