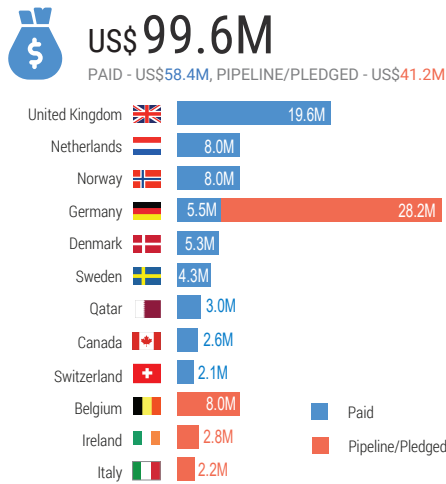


In February, the SCHF launched the its largest ever reserve allocation of \$62 million to respond to the massive upscale in the violence and further deterioration of the humanitarian situation to unprecedented levels. This emergency allocation strategy was aligned with the three objectives of the Readiness and Response Plan; protection of civilians, provision of safe reception centres and shelters in and out of camps and provision of emergency services in and out of camps. Following the outbreak of COVID-19, many projects were revised to ensure the inclusion of some key interventions such as increasing soap distribution and water trucking as well as awareness materials.

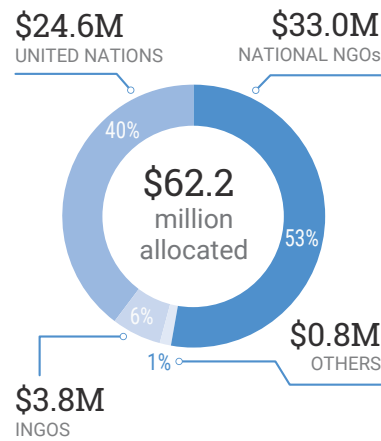
Funding update (million)

\$58.4	Paid (donor contribution)
\$41.2	Pipeline/Pledged by donor
\$55.0	Carry-over
\$63.7	Allocated & committed fund
\$49.7	Available balance

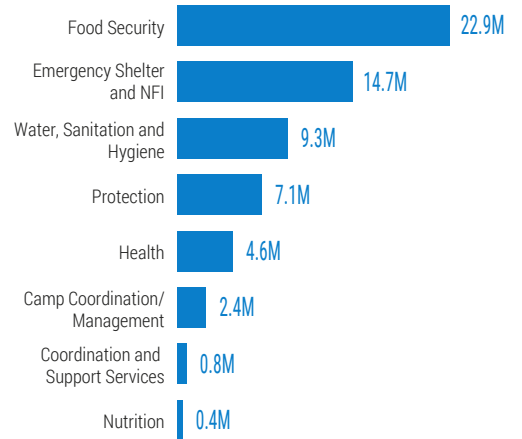
Contributions



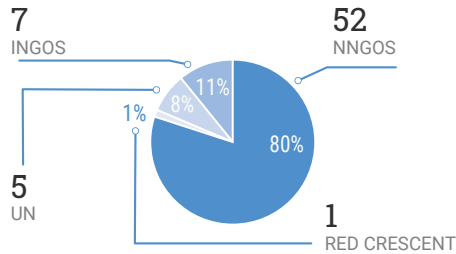
Allocations by type of partner



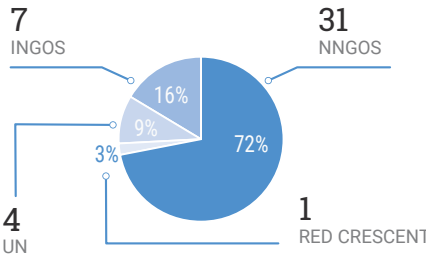
Allocations by cluster



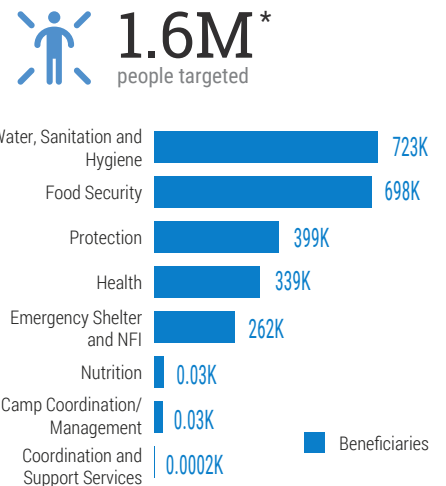
65 projects funded by type of partner



43 partners funded by type

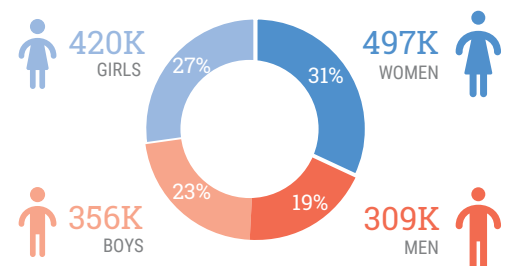
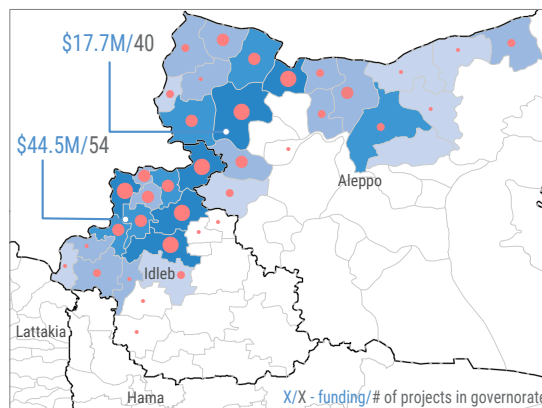


People targeted by cluster



Number of new IDPs by subdistrict, projects and funding per governorate

- Number of new IDPs (since 1 Dec 2019)**
- 1-5,000
 - 5,001-25,000
 - 25,001-50,000
 - >50,000
 - No new IDPs
- Number of projects**
- 1-2
 - 3-5
 - 6-10
 - >10
 - NA



The boundaries and names shown and the designations used on this map do not imply official endorsement or acceptance by the United Nations. This dashboard shows only the funds allocated to date.

*Targeted beneficiaries in this dashboard represents maximum number of beneficiaries per location/community across clusters. The total number reflects the intercluster people targeted. One beneficiary may have been targeted by multiple clusters