

SITUATION OVERVIEW

Yemen is the world's largest humanitarian crisis. Some 22.2 million people - 75 per cent of the population - are in need of humanitarian assistance. 17.8 million people are food insecure and 8.4 million people do not know how they will obtain their next meal. Conflict, protracted displacement, disease and deprivation continue to inflict suffering upon the country's population. Disruption to commercial imports, inflation, lack of salary payment to civil servants and rising prices of basic commodities are further exacerbating people's vulnerability. Despite a difficult operating environment some 156 international and national partners in January through April were actively coordinating to assist people with the most acute needs in priority districts across Yemen's 22 governorates. Together they have assisted over 7.4 million people monthly with some form of humanitarian assistance.

KEY FIGURES

2018 people in need

22.2 million

Women, children and men are in need of assistance in 2018

5.5 M Men
5.4 M Women

5.8 M Boys
5.5 M Girls

2018 people targeted

13.1 million

Women, children and men are targeted in 2018.

3.27 M Men
3.2 M Women

3.39 M Boys
3.24 M Girls

Famine Risk Areas

107 districts

out of the 333 districts are at risk of famine.

Organisations Presence

156

Humanitarian organisations and partners were active in Yemen in January through April

9 UN

30 INGO

117 NNGO

Source: Clusters (Jan- Apr 2018)

Casualties

9,559

55,616

people killed people injured

Due to the high number of health facilities that are not functioning or partially functioning as a result of the conflict, these numbers are likely higher.

53,569 Men
2,947 Women

8,659 Child

Source: WHO (from 19 March 2015 to 30 April 2018)

Outbreaks

Cholera Outbreak

1,09 M

2,274

suspected cases related deaths

21 out of 22 governorates (305 out of 333 districts) have been affected (from 27 April 2017 to 14 April 2018).

Diphtheria Outbreak

1,584

85

suspected cases related deaths

20 out of 22 governorates (195 out of 333 districts) have been affected (as of 14 April 2018).

Source: WHO

FUNDING: 2018 YHRP as per Financial Tracking System (FTS)



	Requested million \$	Funded million \$	Unmet million \$
Food Security & Agriculture	1,270	689.1	581.6
Health	572.4	178.4	394
WASH	298.8	96.7	202.1
Nutrition	195.4	73.9	121.5
Shelter/NFIs/CCCM	195.3	50	145.3
Refugees and Migrants	106.7	35.9	70.8
Protection	104.1	28.4	75.7
Emergency Employment & Community Rehabilitation	99.1	24.8	74.3
Education	53.4	11.1	42.3
Logistics	37.9	20	17.9
Coordination	22.9	21.1	1.8
Emergency Telecommunications	2.2	0	2.2
Not yet specified	n/a	108.7	n/a

People Reached (Jan to April 2018)



People directly assisted monthly with some form of humanitarian support in all 22 governorates.

	People Targeted	People Reached
Health	12.3	2.28
WASH	11.1	7.61
Food Security & Agriculture	8.8	7.06
Nutrition	5.6	0.53
Protection	5.0	0.93
Shelter/NFIs/CCCM	3.0	0.33
Education	1.8	0.51
Emergency Employment & Community Rehabilitation	1.2	0.07
Refugees and Migrants	0.17	0.03

(in millions)

STRATEGIC OBJECTIVES



1 Provide life-saving assistance to the most vulnerable people in Yemen through an effective, targeted response.



2 Ensure that all assistance promotes the protection, safety & dignity of affected people, and is provided equitably to men, women, boys and girls.



3 Support and preserve services & institutions essential to immediate humanitarian action & promote access to resilient livelihood opportunities.

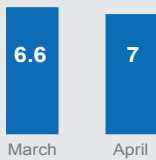


4 Deliver a principled, multi-sectoral, coordinated and inclusive humanitarian response that is accountable to and advocates effectively for the most vulnerable people in Yemen with enhanced engagement of national partners.

FOOD SECURITY AND AGRICULTURE

8.8 million
overall monthly people targeted

Monthly cluster reach⁽¹⁾
(in millions)



⁽¹⁾ This includes monthly emergency food assistance and longer-term livelihoods support.

For more information, contact: gordon.dudi@fao.org

Improve immediate household availability of and access to food for the most vulnerable, through provision of emergency food and livelihoods assistance

Needs

An estimated 17.8 million people (six out of every ten Yemenis) are food insecure, with 8.4 million severely food insecure, requiring urgent humanitarian assistance to stay alive. Needs are driven by the disruptions of commercial imports, mass displacement, loss of income and livelihoods opportunities, fuel scarcity, high commodity prices and the collapse of public services including the payment of salaries for civil servants.

Response

FSAC partners reached an average of 6.8 million people with monthly emergency food assistance (relief food, cash transfers, & voucher transfers) in March and April. Additionally, by the end of April, a cumulative total of 517,906 individuals had received livelihoods assistance (emergency agricultural, livestock & fisheries inputs provided to 463,786 people; and longer-term livelihoods support to 54,120 individuals).

YHRP Monitoring Indicators	Target type	Target	Reached	Reached/Target
Number of individuals receiving regular emergency food assistance (Relief Food/General Food Assistance, cash transfer, and voucher transfers)	Individuals	8,404,167	7,014,265 ^(*)	83%
Number of individuals provided with access to emergency agricultural, livestock or fisheries assistance and income generating activities, livelihood skills development and longer term asset support	Individuals	6,100,000	517,906	8%

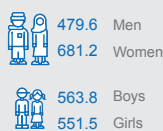
HEALTH

12.3 million
overall people targeted

19%
reached / targeted



Reached by sex & age
(in thousands)



2.3 M

overall people reached

For more information, contact: tanolij@who.int

Increase access of people in need to Minimum Health Service Package and to strengthen preparedness, surveillance and response to communicable diseases outbreaks.

Needs

There are dire health needs due to disrupted health systems and inadequate financial and human resources. There is also a need to ensure access by the people in need to primary and secondary health care by supporting availability of medicines, medical supplies and operations as well as health staff incentives. In addition, there is a need to support surveillance systems, and improve capacities to prevent, detect and control epidemic prone diseases and outbreaks. Health staff needs training and refreshers to build their capacities.

Response

During March and April, Health Cluster partners provided over 1.1 million consultations through supported health facilities. Over 30,000 children under the age of one year received Penta 3 vaccine while more than 13,500 deliveries were assisted by skilled birth attendants. Additionally, around 6,400 trauma cases were treated, and 1,494 mental health consultations provided by the health workers. More than 65,000 women received antenatal care. More than 3,000 health staff were trained.

YHRP Monitoring Indicators	Target type	Target	Reached	Reached/Target
Number of children under one year received Penta 3 vaccine	Children	700,055	99,569	14%
Number of deliveries assisted by a skilled birth attendant	Individuals	3,069,104	44,548	1%

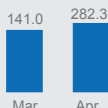
* Average monthly emergency food assistance in March and April

WATER, SANITATION AND HYGIENE

11.1 million
overall people targeted⁽¹⁾

69%
reached / targeted

People reached with safe water through water trucking (in thousands)



7.6 M

overall people reached

Support the repair, operation and maintenance of affected WASH systems, and direct provision of WASH services and items to affected people.

Needs

Due to the increase of the fuel and water prices (through private trucking), public water and sanitation systems are struggling to maintain functional and requiring additional support from partners. Overall, cholera continued to decrease, but 100 districts still reported as priority for cholera in March, which requires continuous large-scale cholera response.

Response

WASH cluster partners continued their support to water and sanitation systems, with an estimated 2.5 million people reached. Fuel support to public water networks in key cities was further scaled up. Cholera response continued at large scale; with around a million people reached with safe water, chlorine tablets, hygiene kits or hygiene messages during March and April.

For more information, contact: mohammali@unicef.org

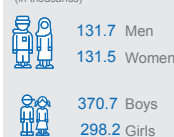
YHRP Monitoring Indicators	Target type	Target	Reached	Reached/Target
Number of people served by support to operation, maintenance and rehabilitation of public water systems	Individuals	7,288,599	3,124,987	43%
Number of people provided with hygiene kits (basic and consumable)	Individuals	6,090,431	1,190,378	20%

PROTECTION

5.0 million
overall people targeted

19%
reached / targeted

Reached by sex & age (in thousands)



0.9 M

overall people reached

Monitor protection risks and deliver protection assistance and services for vulnerable, displaced and conflict-affected persons, while supporting community-based responses to address protection needs

Needs

Widespread violations of IHL by parties to the conflict pose an ongoing threat to the life and safety of civilians, resulting in loss of life, displacement and destruction of infrastructure. The protracted nature of the conflict is particularly affecting women, children and persons with specific needs whose vulnerability is further exacerbated and resort to negative coping mechanisms as means of survival. As grave violations of children's rights continue to occur, support for affected children is critical, as is mine risk education. GBV incidents have significantly risen with requiring multi-sectoral responses.

Response

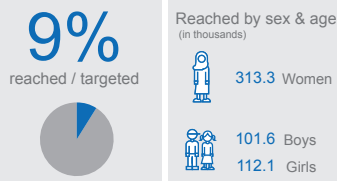
Despite gaps in funding and serious operational constraints to protection, as of April 2018 Protection Cluster partners have reached over 900,000 people overall with life-saving protection services such as psychosocial support, legal assistance and protection cash, as well as clinical care for survivors and safe spaces for women, men, girls and boys. Over 80,000 persons have been reached through monitoring of protection and IHL/IHRL, while 642,317 children and community members have received information to protect against mines and UXOs. Community-based responses continue to be strengthened through 4,708 community-based protection network volunteers, community protection initiatives as well as community centers serving the needs of IDPs and conflict-affected populations.

For more information, contact: cheung@unhcr.org

YHRP Monitoring Indicators	Target type	Target	Reached	Reached/Target
Number of individuals benefiting from psychosocial support (not including CP or GBV)	Individuals	259,514	23,779	9%
Number of children reached with critical child protection services (family tracing and reunification, case management, Victim assistance)	Children	12,932	427	4%
Number of GBV beneficiaries reached with lifesaving GBV multi-sectoral services and support	Individuals	31,567	9,859	31%

NUTRITION

5.6 million
Revised overall people targeted



0.5 M
overall people reached

For more information, contact: aziolkovska@unicef.org

Save lives by reducing prevalence of acute malnutrition and strengthening humanitarian life-saving preventive nutrition services for vulnerable population groups

Needs

An estimated 7.5 million people need nutrition assistance, with 2.9 million people who will require treatment for acute malnutrition, including 1.8 million children under the age of five and 1.1 million pregnant and lactating women (PLW). 2.3 million of PLW and caretakers of children 0-23 months will require infant and young child feeding counselling. Main challenges faced by nutrition partners include bureaucratic and administrative impediments to deliver assistance, non-payment of salaries for the health workers, access constraints and limited number of community health workers in the country.

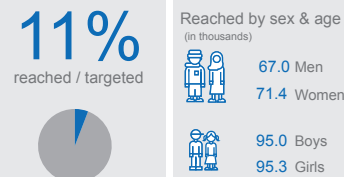
Response

In 2018 to date, 60,896 children with Severe Acute Malnutrition (SAM), 98,512 children with Moderate Acute Malnutrition (MAM) and 78,511 pregnant and lactating women (PLW) with acute malnutrition were admitted for treatment. In addition, 107,664 children received micronutrient powders, and 313,278 women received Infant and Young Child Feeding (IYCF) counselling.

YHRP Monitoring Indicators	Target type	Target	Reached	Reached/Target
Number of children (aged 6-59 months) treated for Severe Acute Malnutrition (SAM)	Children	289,364	60,896	21%
Number of children (aged 6-59 months) treated for Moderate Acute Malnutrition (MAM)	Children	824,269	98,512	12%

SHELTER/NFIs/CCCM

3.0 million
people targeted



0.3 M
people reached

For more information, contact: campbelc@unhcr.org

Provide life-saving and life-sustaining shelter, Non-Food Items and site management solutions to the most vulnerable families

Needs

A large number of Internally Displaced Persons (IDPs) live in severely deprived conditions, including unfinished buildings, substandard shelters, schools, public facilities or in the open. The upsurge of conflict in Yemen western coast since the beginning of the year has generated a new wave of displacement. Enhanced Emergency Shelter Kits (EESK) and Non-Food Items for those newly displaced especially from Al Hudaydah and Taizz is required. Lack of access due to security constraints continue to hamper the response.

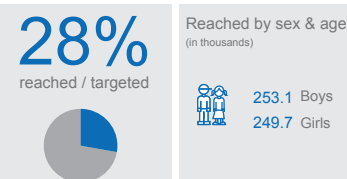
Response

During January to April, 161,200 beneficiaries (25,739 HH) were provided with NFIs in-kind distributions and 12,575 beneficiaries (3,856 HH) with NFIs cash distributions; 43,769 beneficiaries (6,709 HH) were assisted with in-kind for Emergency Shelter Kits (ESKs) and 11,125 beneficiaries (1,922HH) were assisted with cash for ESKs; 21,100 beneficiaries (2989 HH) benefited from the support of cash for rental subsidies; 76 families benefited from the reconstruction of their houses; 120 families benefited from the rehabilitation of their houses; and 90 families received new transitional shelter.

YHRP Monitoring Indicators	Target type	Target	Reached	Reached/Target
Number of families received Non-Food-Items (NFIs)	Households	142,466	25,739	18%
Number of families received Emergency Shelter (ES)	Households	83,640	8,631	10%

EDUCATION

1.8 million
overall people targeted



0.5 M
overall people reached

For more information, contact: aalshami@unicef.org

Provide affected children with equitable access to safe and protective learning spaces including school meal, hygiene education and keeping the education system functional

Needs

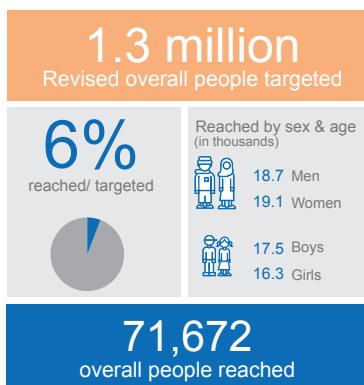
Disruption to the payments of salaries to teachers in 13 governorates has greatly hindered the commencement of school year in these governorates and continues to jeopardise the provision of education. Displacement is also affecting education system as teachers and students are displaced and schools are often used by IDPs as shelter. There is an urgent need to support schools, in districts with high severity of need, with provision of desks and essential learning supplies and teacher training on psychosocial support.

Response

During March and April, 12 affected schools were repaired in Al Hudaydah, Taizz and Lahj governorates including rehabilitation of WASH facilities helping 4,923 students to have better schooling environment. Additionally latrines have been rehabilitated in 26 schools in Aden, Amran, Ibb and Lahj benefitting 17,891 students. Cluster partners supported various activities reaching around 193,000 students with emergency related training for their teachers, 66,939 with provision of learning supplies, provision of school food to 59,618 students and 10,411 through provision of alternative learning classrooms.

YHRP Monitoring Indicators	Target type	Target	Reached	Reached/Target
Number of students benefitted from schools with partial damage rehabilitated (including WASH)	Children	71,800	15,937	22%
Number of students receiving school bags and essential learning materials	Children	1,200,000	89,470	7%

Emergency Employment and Community Rehabilitation



For more information, contact: stean.tshiband@undp.org

Improve vulnerable households' food security and stabilize the economic status of vulnerable households through access to emergency employment and removal of the threat posed by landmines and ERWs.

Needs

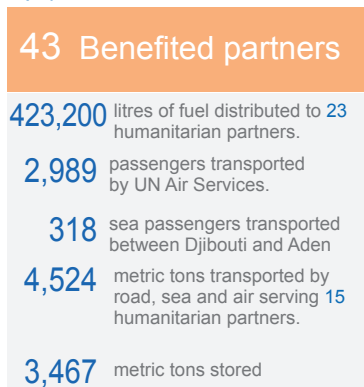
Eight million people need emergency income to meet critical food needs and access to services. Landmines and explosive remnants of war (ERW) continue to pose threat to lives and prevent the resumption of economic activities, movements of populations and goods as well as access to basic services and infrastructure.

Response

Mine Action partners released around 2,736,183 square meters of land through clearance and survey activities in 28 districts across 14 governorates, and removal of 145,412 landmines and ERWs, directly benefiting 426,250 people. 8,079 conflict-affected households (56,806 individuals) were reached with non-agricultural livelihoods assistance, 69 households (494 individuals) with small business recovery and 8,010 households (56,312 individuals) with emergency employment in 8 governorates. In addition, 1,238 individuals took part in vocational/skills training aimed at improving their livelihoods in 22 districts (11 governorates).

YHRP Monitoring indicators	Target type	Target	Reached	Reached/Target
Number of Square meters of land surveyed and cleared	Square Meters	10,000,000	4,580,139	46%
Number of households having access to alternative income sources/employment (through Cash for Work schemes)	Households	135,499	9,395	7%

LOGISTICS



For more information, contact: christophe.morard@wfp.org

Support a coordinated logistics response and fills logistics gaps by facilitating access to common logistics services.

Needs

The humanitarian community faces a number of critical logistics challenges hampering the delivery of relief items in and across the country, including damaged road infrastructure; access disruptions to many parts of the country for both staff and cargo; congestion at main entry points; unreliable and unpredictable access to fuel; heavy bureaucracy; limited international shipping options, both by sea and air.

Response

The Logistics Cluster supports an efficient logistics response through coordination and information management. The Logistics Cluster also facilitates access to common services for humanitarian organisations, which include: cargo transport from Djibouti to Sana'a by air, and to Aden and Al Hudaydah by sea; overland cargo transport and cargo storage across Yemen; fuel distribution in Sana'a, Al Hudaydah and Aden; sea passenger transport from Djibouti to Aden and Al Hudaydah. In addition, UNHAS connects Amman to Sana'a, and Djibouti to both Sana'a and Aden.

EMERGENCY TELECOMMUNICATIONS



For more information, contact: wali.noor@wfp.org

Provision of reliable ETC services for the humanitarian community, information sharing and coordination of security telecoms and IT emergency response activities.

Needs

Humanitarians are still reliant on access to reliable Internet and security telecommunications services in order to do their work effectively. Challenges include restrictions on importing ICT equipment, a volatile security situation and difficulties in obtaining visas for staff deployments.

Response

The ETC opened a new hub at the PU-AMA office in Al Hudaydah and the ETC Coordinator conducted a mission to WFP IT's Emergency Preparedness and Response branch in Dubai to present the ETC operation in Yemen. OCHA, the ETC and UNICEF organised a half-day workshop to explore ways to establish a Community Feedback Mechanism (CFM). The ETC has signed an agreement to extend its support of the implementation of the Emergency Operations Centers (EOC) project with World Health Organization (WHO) as part of the cholera response.

REFUGEE AND MIGRANT MULTI-SECTOR

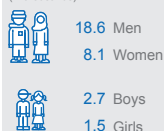
0.17 million
overall people targeted

18%
reached / targeted

reached / targeted



Reached by sex & age
(in thousands)



30,907

overall people reached

Provide life-saving, multi-sectoral assistance to refugees, asylum seekers and migrants with acute needs while strengthen response services including access to basic needs, capacity development, referral and coordination

Needs

Migrants and refugees are in need of life-saving, multi-sectoral assistance such as food, WASH, health, temporary shelter and direct protection. From January to April 2018, 26,994 migrants and refugees are estimated to have arrived in Yemen, crossing the Red and Arabian Seas.

Response

The response for migrants has included identifying vulnerabilities and providing immediate assistance to unaccompanied minors, Gender Based Violence (GBV) cases, victims of human rights violations and Humanitarian Voluntary Return. The response for refugees also includes distribution of food, water, NFIs, shelter, health, protection and support for spontaneous returns.

For more information, contact: lkoussa@iom.int, veron@unhcr.org

YHRP Monitoring indicators	Target type	Target	Reached	Reached/Target
Number of beneficiaries received NFI kits (hygiene, dignity, etc) or cash grants	Individuals	29,048	11,655	40%
Number of beneficiaries provided with safe and dignified returnee transport or received voluntary humanitarian return	Individuals	11,000	422	4%