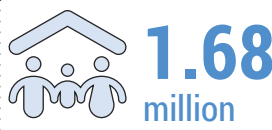


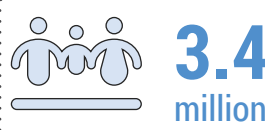
TOTAL POPULATION



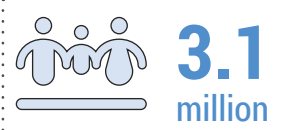
INTERNALLY DISPLACED PEOPLE (IDPs)



IDPs LIVING IN CAMPS/ INFORMAL SITES



PEOPLE IN NEED (PIN)



ACUTE PEOPLE IN NEED

2.9 million
in Idleb area

1.9 million
in Idleb area

1,402
camps/informal sites

2.4 million
in Idleb area

2.1 million
in Idleb area

1.3 million
in northern Aleppo
(Turkish Operation Area)

0.8 million
in northern Aleppo
(Turkish Operation Area)

80%
women and children

1.0 million
in northern Aleppo
(Turkish Operation Area)

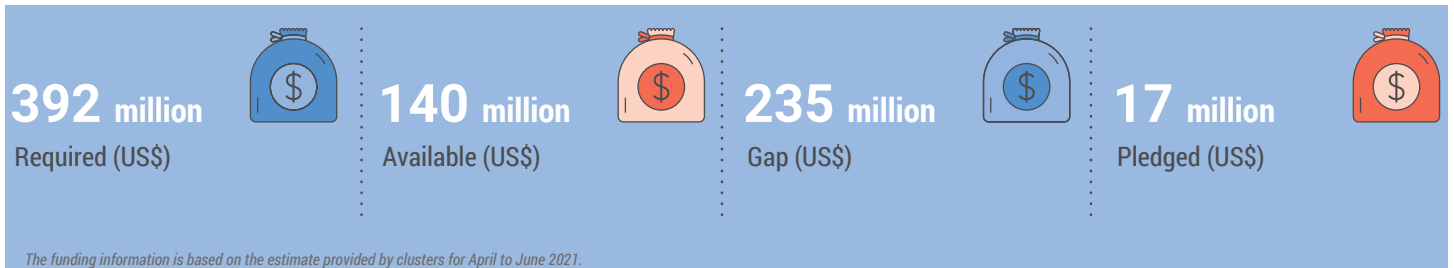
1.0 million
in northern Aleppo
(Turkish Operation Area)

IDP MOVEMENT (February 2021)

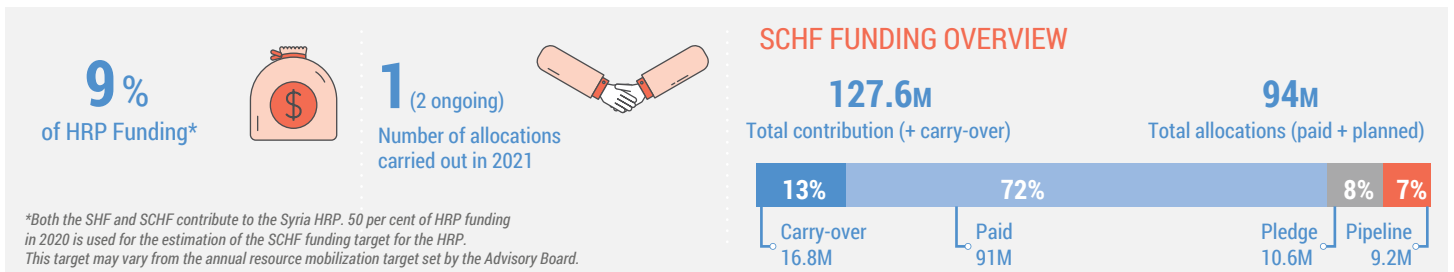
	IDLEB	ALEPPO
IDPs departure from governorate	16.6K	9.3K
Displacement within governorate	11.6K	6.9K
IDPs arrival to governorate	14.4K	12.2K

These figures are for the whole governorate

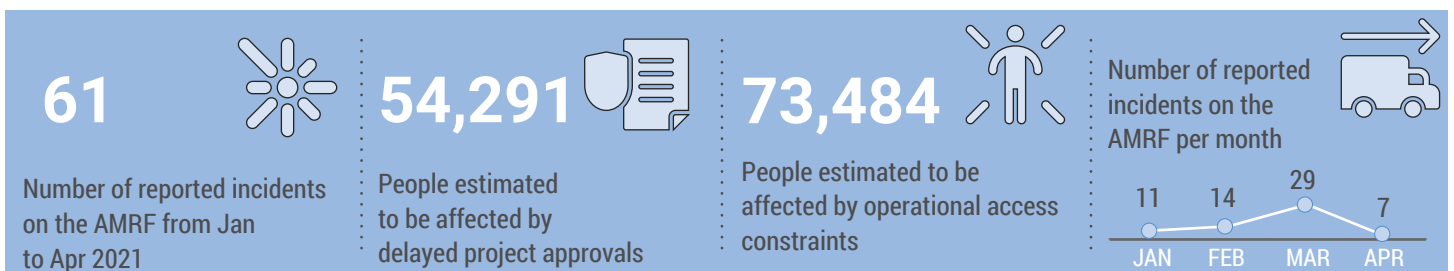
FUNDING (April - June 2021)



SCHF FUNDING



ACCESS AND CIVIL MILITARY



NWS HUMANITARIAN REACH AND ACTIVITIES



2.4M

Average monthly intersector people reached



65

Sub-districts reached



772

Communities reached

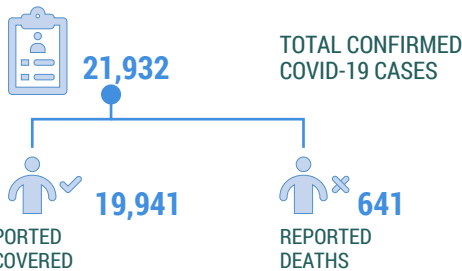
HUMANITARIAN NEEDS

CURRENT PRIORITIES

IDP movements tracked (February 2021) 31,000

Wind affected (HHs in March 2021) 3,214

COVID - 19 (as of 28 April 2021)



IDLEB 11,761 confirmed cases

NORTHERN ALEPPO 10,171 confirmed cases

SYP exchange rate (average for April 2021) 1USD = 3,130

* Chronic malnutrition (stunting) children under 5 in NWS	34%
Acutely malnourished across Syria	4%
Disability rate across Syria	25%
Disability rate amongst IDPs across Syria	36%

SC HUMANITARIAN FUND

Number of donors	12
SCHF Projects under implementation	113
Number of financial spot checks completed	58
Number of monitoring completed	55
Number of audits (field work completed)	166

HUMANITARIAN RESPONSE (in Feb 2021)



People reached in Feb 2021

People reached	1,210K	67K	400K	1,890K**	931K***	89K****	140K	105K	987K****
Sub-districts reported	29	44	39	35	40	34	31	20	32
Number of organizations	43	48	46	24	43	31	62	22	43

*Source HNO 2021
Page 2 of 2

** Food baskets only
*** Medical procedures
**** WASH direct beneficiaries reached

HUMANITARIAN RESPONSE

INTERSECTOR PEOPLE REACHED

People reached by month 2021

2.4M



JAN

FEB

MAR

APR

NUMBER OF TRUCKS THROUGH BAB AL HAWA (Apr 2021)



1,028 Trucks (Apr 2021)



5 Agencies reported (Apr 2021)

42,880

Trucks since July 2014 (includes shipment through Bab Al-Salam)

4,236

Trucks since Jan 2021

7

Agencies reported

EMERGENCY FOOD RESPONSE (April 2021)

Number of people receiving food in April 2021 101,252

Cooked meals 4,034

Emergency Food Basket 11,890

Cash for Food 60,228

Ready to Eat Rations 25,100

WINTERIZATION RESPONSE (Shelter NFI - Mar 2021)

Winter Assistance (Total)



1,449,021 People targeted

105%

1,518,835 Reached