



Photo Credit: Olivia Headon

Emergency preparedness for the cyclone and monsoon seasons remains the priority, with a narrowing window for risk mitigation measures. In the reporting period, **5,094 people at risk** of landslides or floods have been relocated to safer areas (bringing the total relocated to date, both for infrastructure development and to mitigate risk, to over 24,496). **4,335 additional** safer plots are ready as of 21st May 2018 with relocations ongoing. **The dearth of safe space for at-risk refugees, including the lack of appropriate shelters for high winds and cyclones, limits the possibilities for risk mitigation.**

Key figures

915,000

refugees estimated in Cox's Bazar, according to the Needs and Population Monitoring (NPM) exercise.

NPM estimates are based on interviews with key informants and triangulated through field observations and spontaneous community group discussions

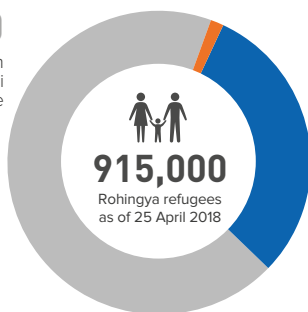
878,596

refugees counted at the household level via the RRRC Family Counting Exercise.

Methodology is based on interviews with each family, collecting gender-and age-disaggregated statistics, geolocations and specific protection needs.

623,000

refugees in Kutupalong Balukhali Expansion Site



915,000

Rohingya refugees as of 25 April 2018

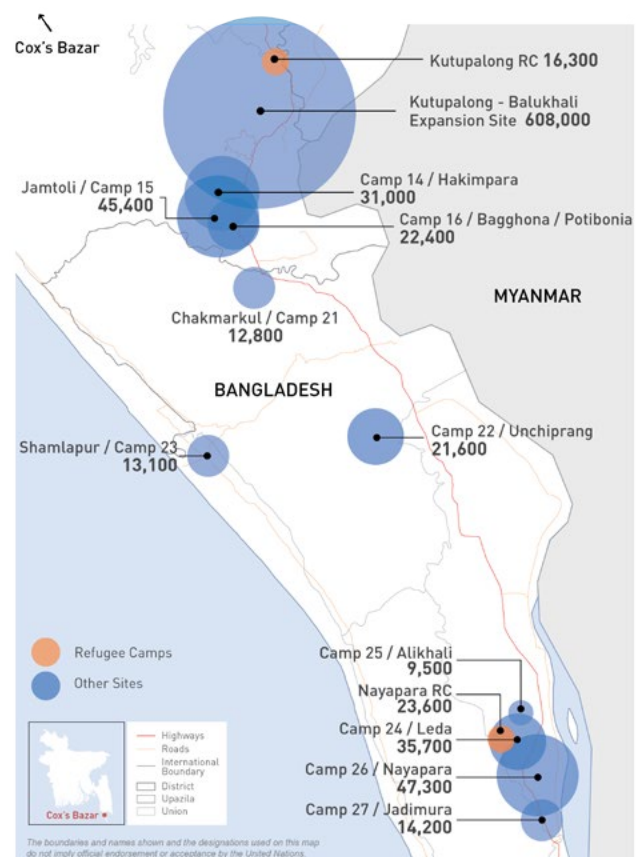
15,000

refugees in host communities**

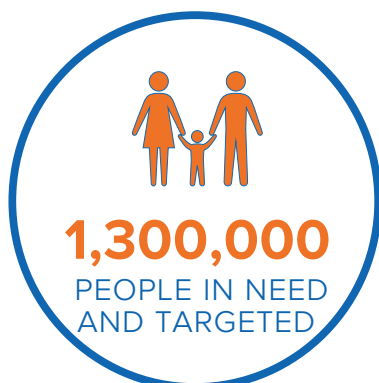
277,000

refugees in other settlements/camps

Site locations and population



People in Need



* as estimated in the 2018 Joint Response Plan, including refugees and host communities

The boundaries and names shown and the designations used on this map do not imply official endorsement or acceptance by the United Nations.

Humanitarian response (since March 2018)

 **137,646**

children and youth enrolled in learning opportunities in camps, settlements and host communities

Target: 530,000 children and youth

 **855,000**

people receiving food assistance

Target: 959,000 people

 **33**

primary health centre facilities

 **13,441**

refugees benefitting from awareness raising and community-based protection mechanisms

Target: 103,389 people

 **182,287**

girls and boys benefitting from psychosocial activities

Target: 400,000 boys and girls

 **55**

safe, accessible entry points for GBV case management services

Target: 200 safe, accessible entry points

 **7,609**

children 0-59 months with Severe Acute Malnutrition newly admitted for treatment

Target: 35,093 children

 **169,246**

in-need households received Shelter Upgrade Kits.

Target: 180,000 households

 **18,408**

individuals relocated due to risks of landslides/flooding and construction of critical infrastructures as of 8th May 2018

 **66%**

of the target population benefitting from safe water to agreed standards and meeting demand for domestic purposes (15 litres per person per day)

Target: 1,052,495 people

 **38%**

refugees with information on cyclone preparedness, hygiene and MCH issues conducted by 1,040 community volunteers

Target: 90% of people

 **19,969m³**

Total Cargo Handled (m³) on behalf of the humanitarian community since the start of the response

 **32 HUBS**

providing inter-sector information services and equipment

 **19.5KM**

of the Army Road in Kutupalong completed (LGED **11.79km** and ADF **7.7KM**) and an extended an electricity cable 9 km inside of the camp

 **1,114,386**

biometric registrations reported by the Government of Bangladesh as of 8th May 2018

JRP Funding (US\$ millions)

JOINT RESPONSE PLAN 2017

USD 950.8M

requested in the Humanitarian Response Plan 2017

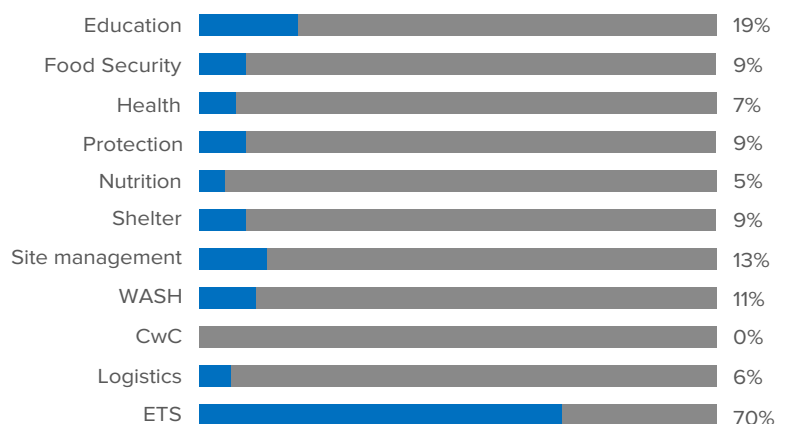
18% 

funded (FTS as of 22 May 2018)

 **USD 11.4M**

in funding outside the JRP (including the Red Cross Movement and others)

FUNDING BY SECTOR



JRP 2018 Strategic Objectives



1. Provide timely lifesaving assistance and protection, as well as improve the living conditions of Rohingya refugees and affected host communities.



2. Ensure well-being and dignity of Rohingya refugees and affected host communities.



3. Support environmentally sustainable solutions.



4. Confidence-building and resilience of Rohingya refugees and affected host communities.