



Photo Credit: ISCG

A total of 9,756 individuals in 2,124 families have been verified through the Government of Bangladesh and UNHCR joint verification exercise, as of 18 July. All individuals above the age of 12 have received an ID card and all households received a family certificate, which will be used for the provision of protection and assistance in Bangladesh. The exercise aims at consolidating a unified database for identity management, documentation, provision of protection and assistance, population statistics and ultimately solutions. The exercise will enhance the accuracy of data on Rohingya refugees in Bangladesh, helping the Government and aid agencies better understand needs, plan assistance and avoid service duplication.

## Key figures

# 919,000

refugees estimated in Cox's Bazar, according to the Needs and Population Monitoring (NPM) exercise.

NPM estimates are based on interviews with key informants and triangulated through field observations and spontaneous community group discussions

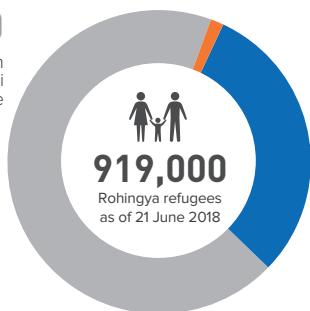
# 888,111

refugees identified, including 854,155 counted at the household level via the RRRC Family Counting Exercise and 33,956 registered before 25 Aug 2017.

Methodology is based on interviews with each family, collecting gender-and age-disaggregated statistics, geolocations and specific protection needs.

## 626,000

refugees in Kutupalong Balukhali Expansion Site



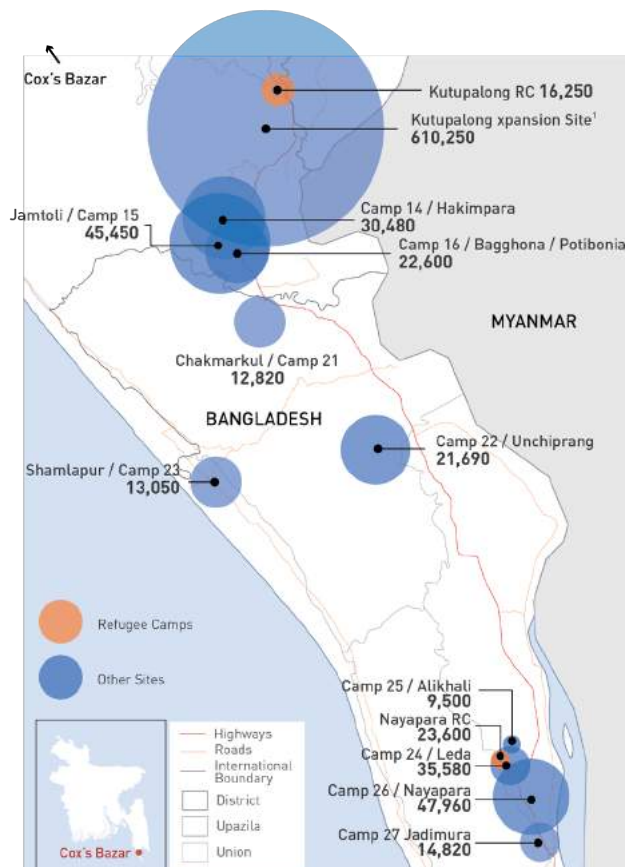
## 15,000

refugees in host communities\*

## 278,000

refugees in other settlements/camps

## Site locations and population



## People in Need



\* as estimated in the 2018 Joint Response Plan, including approximately 330,000 Bangladeshi in host communities.

The boundaries and names shown and the designations used on this map do not imply official endorsement or acceptance by the United Nations.

## Humanitarian response (since March 2018)

 **141,628**

children and youth enrolled in learning opportunities in camps, settlements and host communities

Target: 530,000 children and youth

 **835,000**

people receiving food assistance

Target: 959,000 people

 **33**

primary health centre facilities

 **33,084**

refugees benefitting from awareness raising and community-based protection mechanisms

Target: 103,389 people

 **193,212**

girls and boys benefitting from psychosocial activities

Target: 400,000 boys and girls

 **65**

safe, accessible entry points for GBV case management services

Target: 200 safe, accessible entry points

 **13,557**

children 0-59 months with Severe Acute Malnutrition newly admitted for treatment

Target: 35,093 children

 **199,748**

in-need households received Shelter Upgrade Kits.

Target: 211,000 households

 **36,037**

individuals relocated due to risks of landslides/flooding and construction of critical infrastructures as of 15<sup>th</sup> July 2018

 **699,497**

of the target population benefitting from safe water to agreed standards and meeting demand for domestic purposes (15 litres per person per day)

Target: 1,052,495 people

 **326**

latrines have been decommissioned during the reporting period

 **22,204m<sup>3</sup>**

Total Cargo Handled (m<sup>3</sup>) on behalf of the humanitarian community since the start of the response

 **32 HUBS**

providing inter-sector information services and equipment

 **30**

metric tons of High-Energy Biscuits are stockpiled to support 8,000 families during 3 days in case of emergency

 **5,558**

plots available in existing sites by the end of July 2018

## JRP Funding (USD millions)

### JOINT RESPONSE PLAN 2018

**USD 950.8M**

requested in the Joint Response Plan 2018

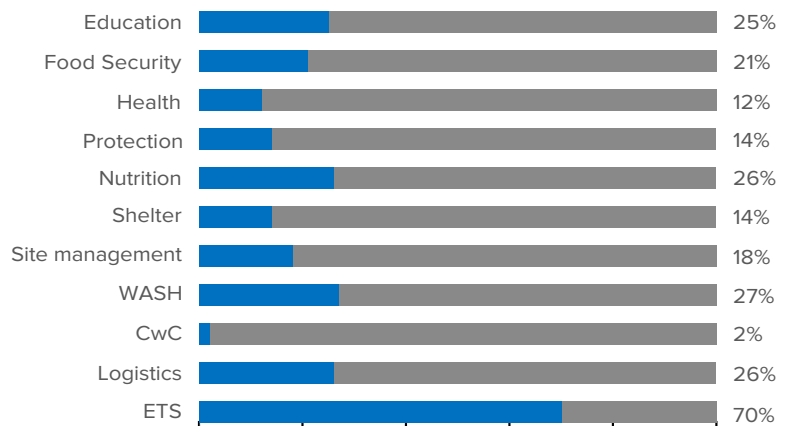
**27%** 

funded (FTS as of 19 July 2018)

 **USD 23.7M**

in funding outside the JRP (including the Red Cross Movement and others)

### FUNDING BY SECTOR



## JRP 2018 Strategic Objectives



**1.** Provide timely lifesaving assistance and protection, as well as improve the living conditions of Rohingya refugees and affected host communities.



**2.** Ensure well-being and dignity of Rohingya refugees and affected host communities.



**3.** Support environmentally sustainable solutions.



**4.** Confidence-building and resilience of Rohingya refugees and affected host communities.