

SITUATION REPORT DATA SUMMARY

ROHINGYA REFUGEE CRISIS, Cox's Bazar | 05 September 2018 (covering 14th August - 27th August)



Over 13,009 persons have been verified through the Government of Bangladesh and UNHCR joint verification exercise. Shelter upgrades continue, including mid-term and transitional shelter solutions with increased wind resistance. WASH and Health Sector coordination has improved further with relation to sharing information on and responding to reports of diarrheal diseases. Despite integration of GBV concerns into health strategies, post-rape coverage remains low. Child protection services, including for adolescents, also need expansion. Space for emergency evacuations and sustainable relocations remain topline needs. Ongoing funding gaps limit humanitarian capacity.

Key figures

919,000

refugees estimated in Cox's Bazar, according to the Needs and Population Monitoring (NPM) exercise.

NPM estimates are based on interviews with key informants and triangulated through field observations and spontaneous community group discussions

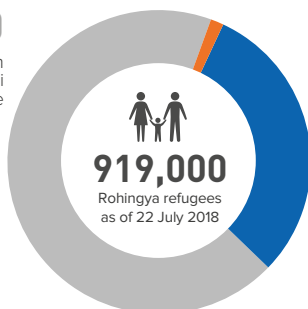
891,878

refugees identified, including 857,922 counted at the household level via the RRRC Family Counting Exercise and 33,956 registered before 31 Aug 2017.

Methodology is based on interviews with each family, collecting gender-and age-disaggregated statistics, geolocations and specific protection needs.

626,000

refugees in Kutupalong Balukhali Expansion Site



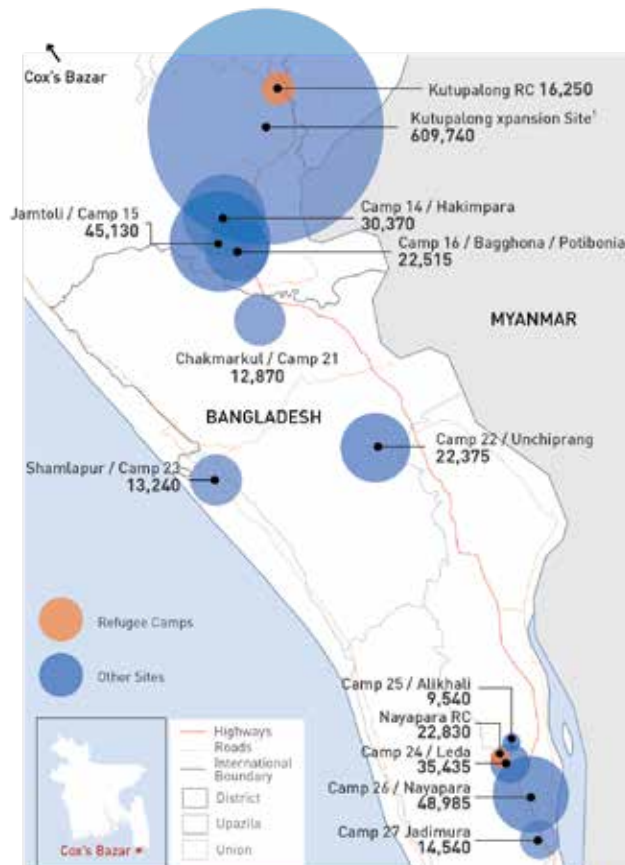
15,000

refugees in host communities*

278,000

refugees in other settlements/camps

Site locations and population



People in Need



* as estimated in the 2018 Joint Response Plan, including approximately 330,000 Bangladeshi in host communities.

The boundaries and names shown and the designations used on this map do not imply official endorsement or acceptance by the United Nations.

Humanitarian response (since March 2018)

 **143,141**

children and youth enrolled in learning opportunities in camps, settlements and host communities

Target: 530,000 children and youth

 **866,041**

people receiving food assistance

Target: 959,000 people

 **33**

primary health centre facilities

 **138,316**

refugees benefitting from awareness raising and community-based protection mechanisms

Target: 103,389 people

 **208,138**

girls and boys benefitting from psychosocial activities

Target: 400,000 boys and girls

 **85**

safe, accessible entry points for GBV case management services

Target: 200 safe, accessible entry points

 **20,585**

children 0-59 months with Severe Acute Malnutrition newly admitted for treatment

Target: 35,093 children

 **162,652**

in-need households received Shelter Upgrade Kits.

Target: 211,000 households

 **41,461**

individuals relocated due to risks of landslides/flooding, new arrivals and construction of critical infrastructures as of 26 August 2018

 **720,487**

of the target population benefitting from safe water to agreed standards and meeting demand for domestic purposes (15 litres per person per day)

Target: 1,052,495 people

 **859,804**

of the target population have received a WASH hygiene kit and/or a top up kit and/or a voucher in the last three months

Target: 1,052,495 people

 **24,145m³**

Total Cargo Handled (m³) on behalf of the humanitarian community since the start of the response

 **32 HUBS**

providing inter-sector information services and equipment

 **124,000**

refugees and Bangladeshis received cash/in-kind livelihoods support

Target: 350,000

 **1,616**

plots available in existing sites

JRP Funding (USD millions)

JOINT RESPONSE PLAN 2018

USD 950.8M

requested in the Joint Response Plan 2018

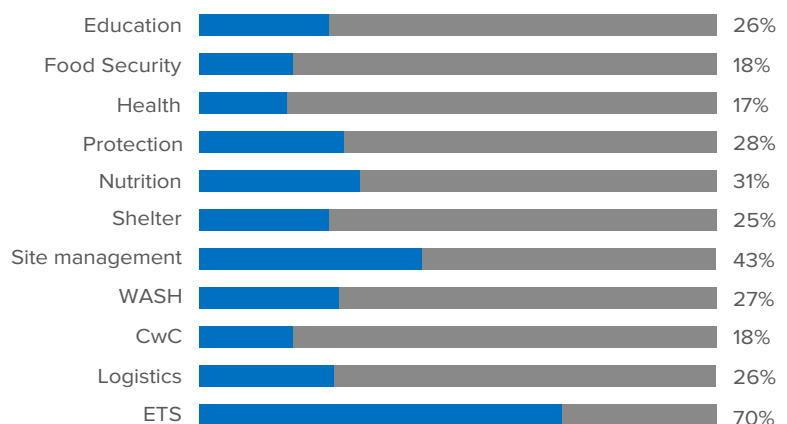
34% 

funded (FTS as of 16 Aug 2018)

 **USD 42M**

in funding outside the JRP (including the Red Cross Movement and others)

FUNDING BY SECTOR



JRP 2018 Strategic Objectives



1. Provide timely lifesaving assistance and protection, as well as improve the living conditions of Rohingya refugees and affected host communities.



2. Ensure well-being and dignity of Rohingya refugees and affected host communities.



3. Support environmentally sustainable solutions.



4. Confidence-building and resilience of Rohingya refugees and affected host communities.