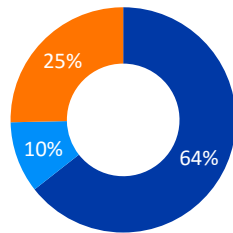


494,144 Individuals
78,386 Households

964 Locations assessed
+33 Villages assessed since last round

Displacements overview



321,886 Internally Displaced Persons

123,489 Returnees

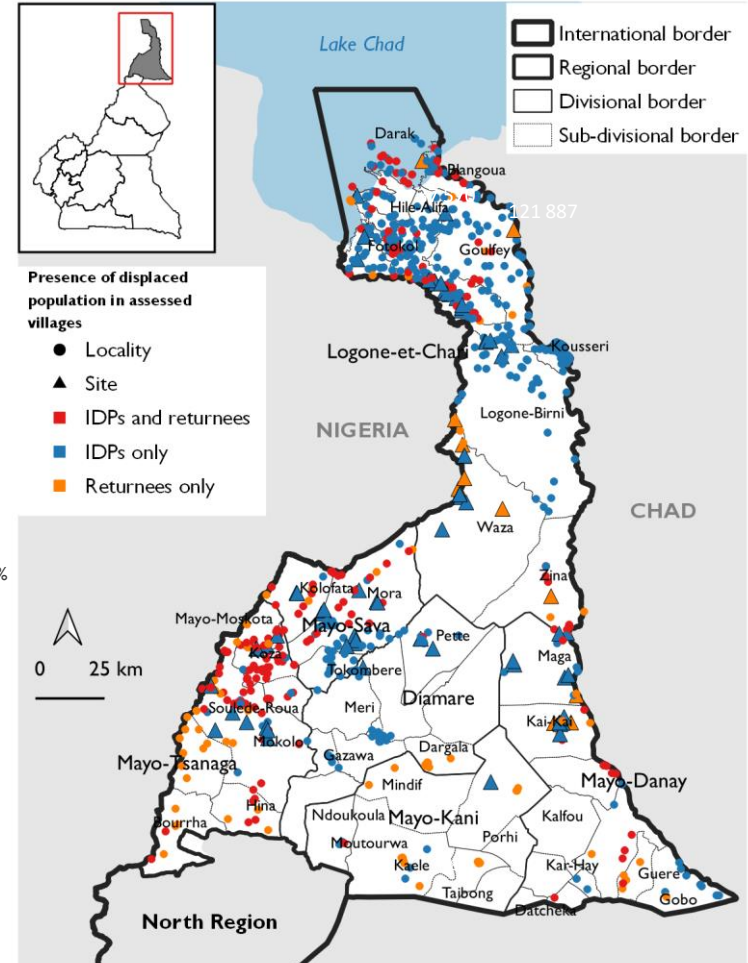
48,769 Out-of-camp refugees

50.7% Male
49.3% Female

64% Minors

7.8 Average Household Size

Location of assessed villages



Changes in the numbers of displaced populations over the last four rounds

Internally Displaced Persons

Returnees

Out-of-camp Refugees

Round	Month	Internally Displaced Persons	Returnees	Out-of-camp Refugees
Round 21	May 2020	321,886	123,489	48,769
Round 20	Dec 2019	297,380	116,979	47,305
Round 19	Aug. 2019	270,870	110,574	46,845
Round 18	April 2019	262,831	110,023	50,981

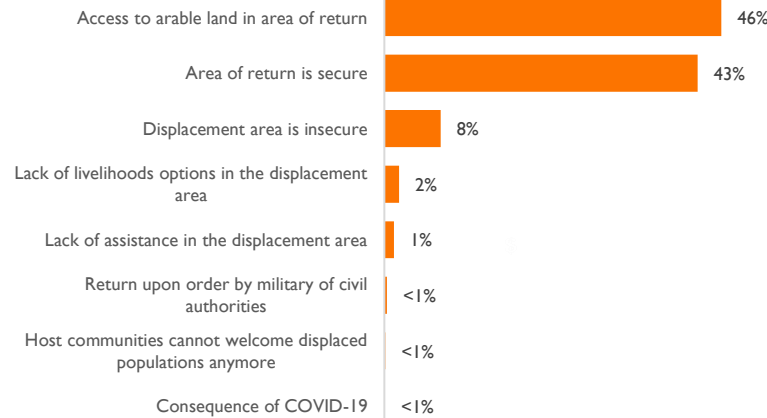
+8% since Round 20 (December 2019)

+6% since Round 20 (December 2019)

+3% since Round 20 (December 2019)

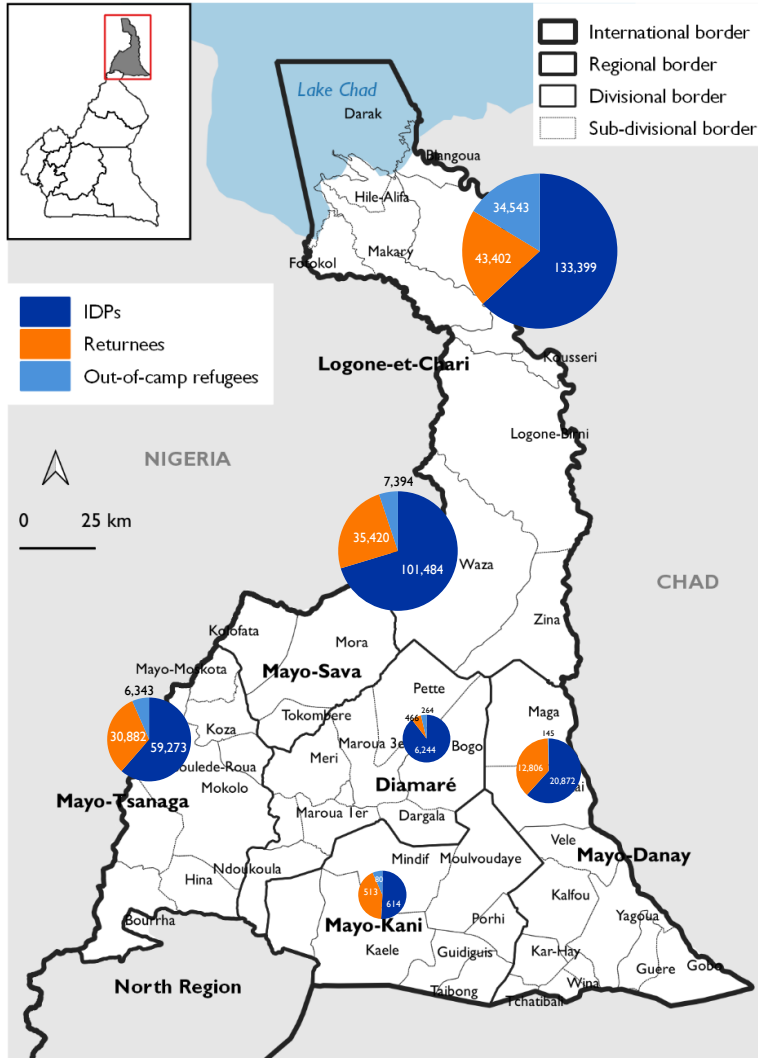
Reasons for displacement

Reasons for return



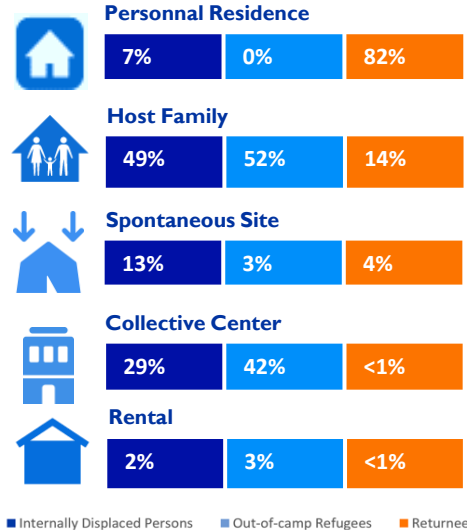
This map is for illustrative purposes only. Representations and the use of boundaries and geographical names on this map do not imply official recognition or acceptance by IOM.

Distribution of displaced populations by divisions

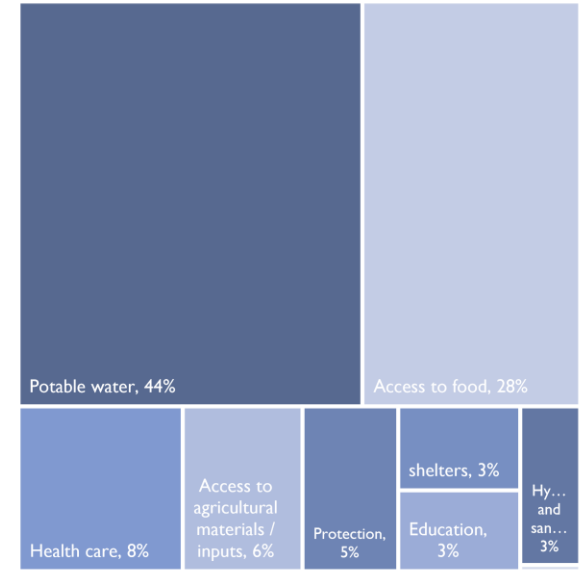


This map is for illustrative purposes only. Representations and the use of boundaries and geographical names on this map do not imply official recognition or acceptance by IOM.

Shelter types

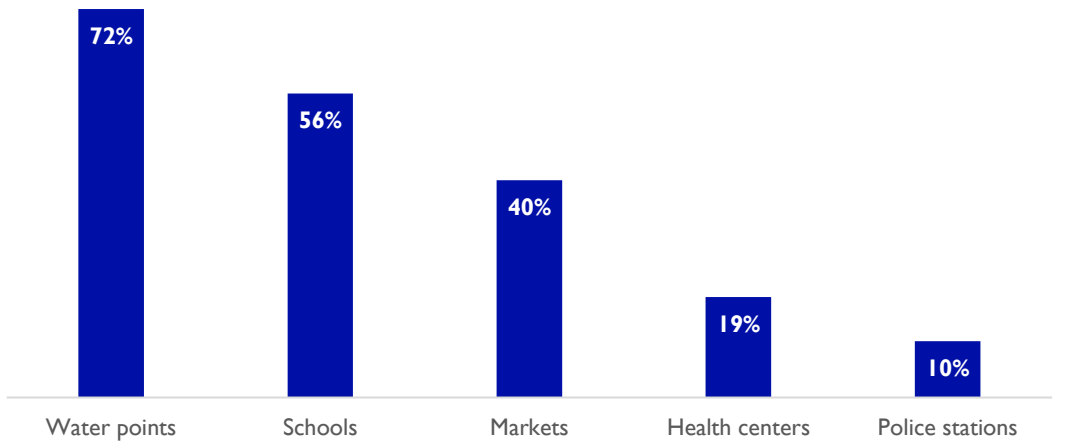


Priority needs of displaced populations



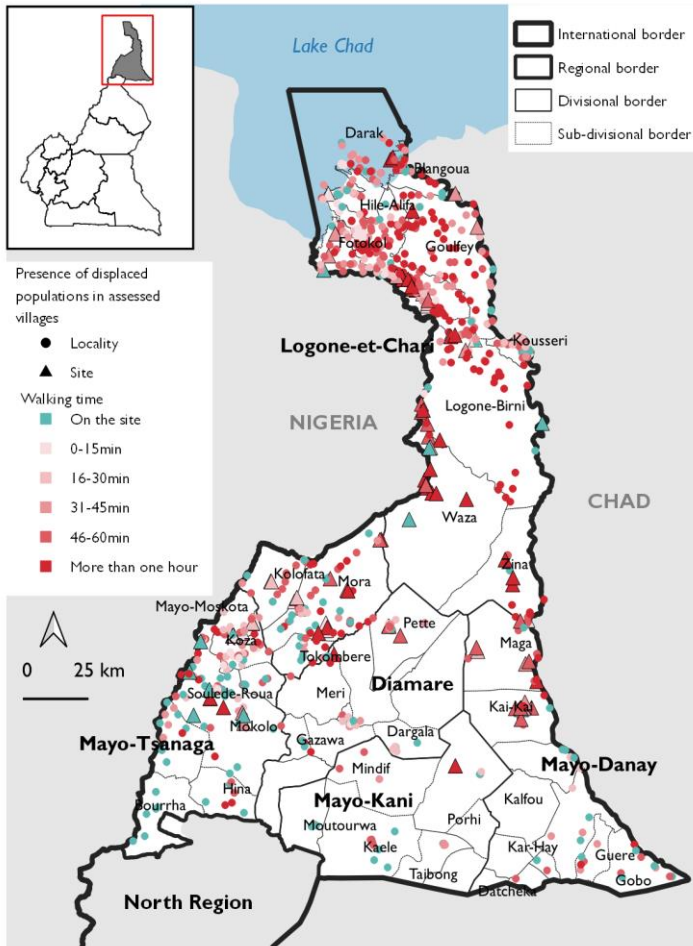
Priority needs listed by key informants.

Available services in assessed locations



COVID-19

Distance to the closest health center

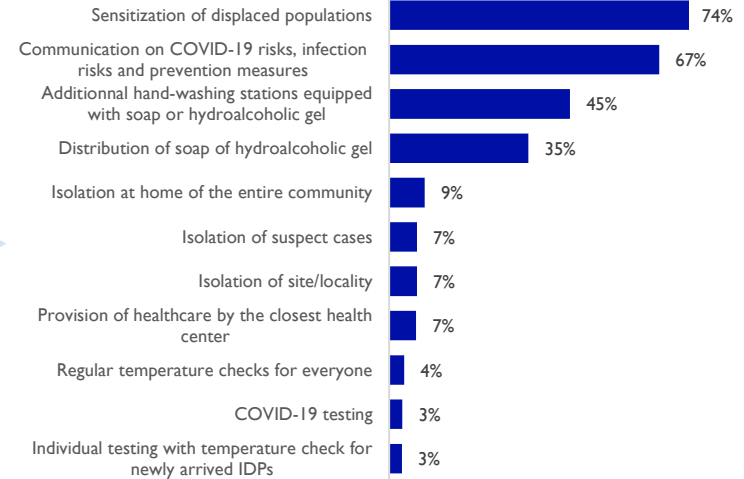


This map is for illustrative purposes only. Representations and the use of boundaries and geographical names on this map do not imply official recognition or acceptance by IOM.

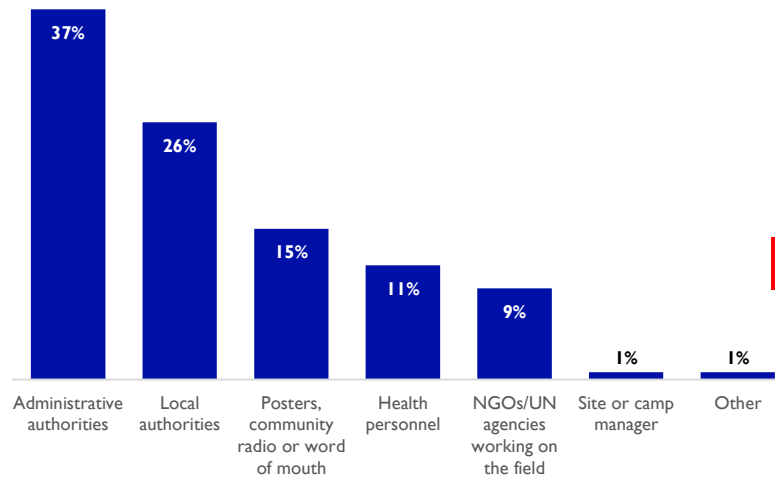
Have measures been taken to prevent or limit the spread of COVID-19?



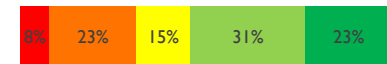
Mitigations and sensitization measures taken in assessed localities



Means used to sensitize populations on COVID-19



Part of displaced persons aware of the existence of COVID-19 in assessed localities



Part of displaced persons who have access to soap or hydroalcoholic gel in assessed localities

