

TOTAL POPULATION
OF BURUNDI

11,8M

NUMBER OF PEOPLE
IN NEED

1,77M

NUMBER OF PEOPLE
TARGETED

710k

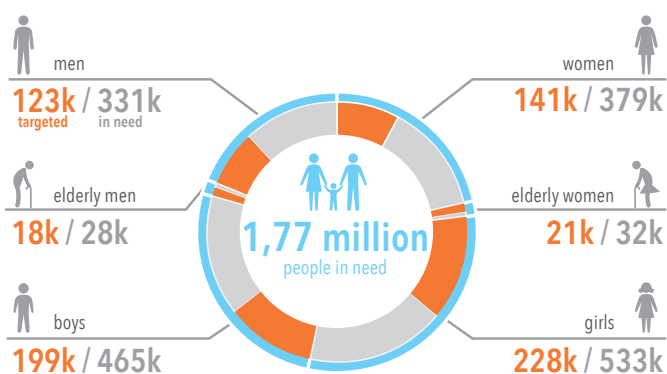
REQUIREMENTS
(US\$)

106M

HUMANITARIAN
PARTNERS

65

PEOPLE IN NEED BY GENDER AND AGE



STRATEGIC OBJECTIVES

1 Provide life-saving assistance to the most vulnerable populations to reduce acute needs and contribute to resilience building efforts: Humanitarian programming will prioritize the provision of assistance to those with one or more vulnerability trait among IDPs, returnees, severely food insecure, children under five who are acutely malnourished or at risk of acute malnutrition, victims of natural disasters as well as Congolese refugees in Burundi. Humanitarian assistance constitutes the first “pillar” of the resilience framework under development, which aims at increasing the resilience of the Burundian people to better cope with shocks and ultimately to reduce needs. The response in 2019 will include access to quality basic services, such as nutrition, protection, NFI/shelter, WASH and health as well as food assistance to those severely food insecure.

2 Ensure the protection of the affected people throughout the humanitarian programming cycle: Humanitarian action will be guided by the notion of centrality of protection to guarantee that the rights of the affected people will be respected and their dignity preserved. Protection will be mainstreamed throughout the sectors along with gender and age and will be considered in needs assessments, program design and response monitoring. Through the adoption of the HCT Protection Strategy, humanitarian actors are committed to ensure that those with protection needs will be targeted through humanitarian action to address critical protection concerns.

INTERNALLY DISPLACED PERSONS

151,000

REFUGEES (DRC)

90,000

REPATRIATED*

116,000

HOST COMMUNITIES

190,000

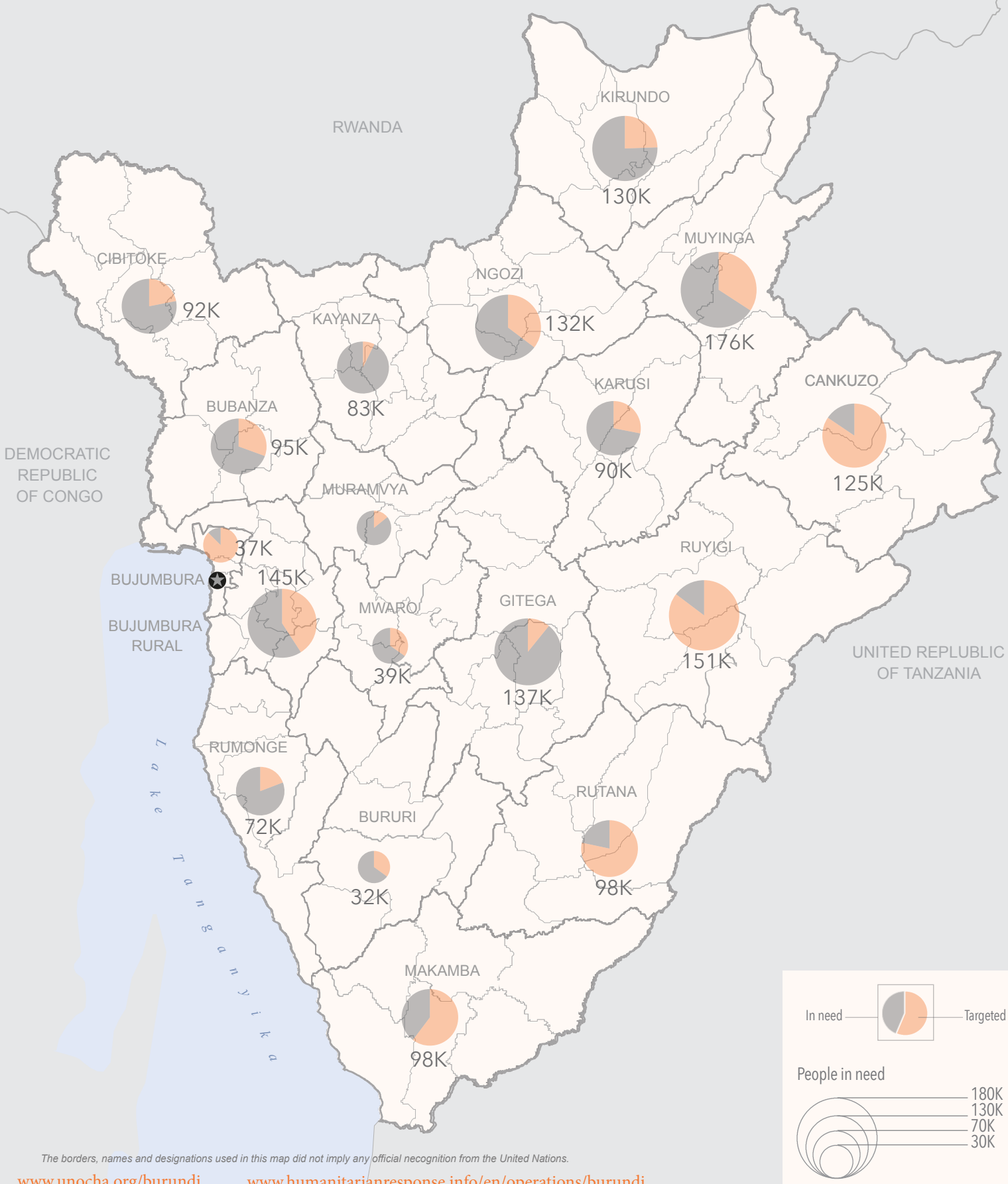
* Repatriated are the people that will voluntarily return to Burundi with the support of UNHCR.

SUMMARY OF NEEDS, TARGETS AND REQUIREMENTS

	TOTAL		BY STATUS		DISTRIBUTION OF PEOPLE TARGETED				BY SEX & AGE		REQUIREMENTS (\$)	
	People in need	People targeted	IDPs	Repatriated	Affected by Natural Disasters	Host communities	Other Civilian	Refugees	% female	% children, adults, elderly*	Refugees	Sectoral Response
1. Non-Food Items 2. Camp Coordination and Camp Management 3. Water, Sanitation and Hygiene												
Shelter /NFI ¹ / CCCM ²	298.7K	235.4K	82.9K	29.7K	25.0K	97.8K			64%	N/A	3.8M	27.8M
WASH ³	254.8K	103.0K	18.7K	8.7K	20.3K	55.3K			54%	55 43 2%	1.7M	1.6M
Education	151.7K	110.6K	34.2K	22.0K	13.8K	40.7K			50%	99 1 0%	1.7M	1.2M
Nutrition	183.4K	125.8K	4.6K	3.5K	3.1K	4.3K	110.3K		54%	97 3 0%		5.0M
Protection	457.9K	311.8K	119.3K	116.0K	25.0K	45.5K	6.0K		65%	83 14 3%	6.8M	18.2M
Health	316.5K	155.3K	18.7K	50.8K	20.0K	65.9K			69%	65 31 4%	3.1M	4.4M
Food Security	1.5M	500.0K	103.8K	90.1K	25.0K	153.3K	127.8K		53%	55 41 4%	1.7M	23.5M
Logistics	90.0K	90.0K						90.0K	51%	56 42 2%	4.0M	
Coordination												1.6M
TOTAL	1,77M**	710k**	119,3k**	116k**	25k**	153,3k**	206,8k**	90k	56%	71 26 3%	\$23M	\$83,3M

*Children (<18 years), adults (18-59 years), elderly (>59 years) **The total is not the sum of the column, since the same person may appear several times

People in need and people targeted by province



The borders, names and designations used in this map did not imply any official recognition from the United Nations.