



KEY FIGURES

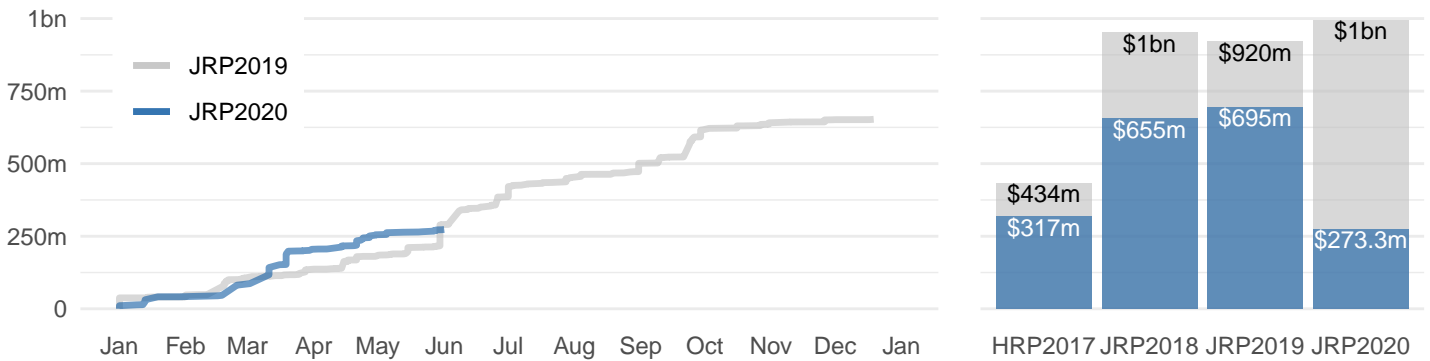
 **855,000**
Rohingya refugees

 **336,000**
Host communities

 **USD 994M**
Overall 2020 appeal

 **27% or 273M**
Funding received

FUNDING TRENDS (Response Plans 2017-2020)

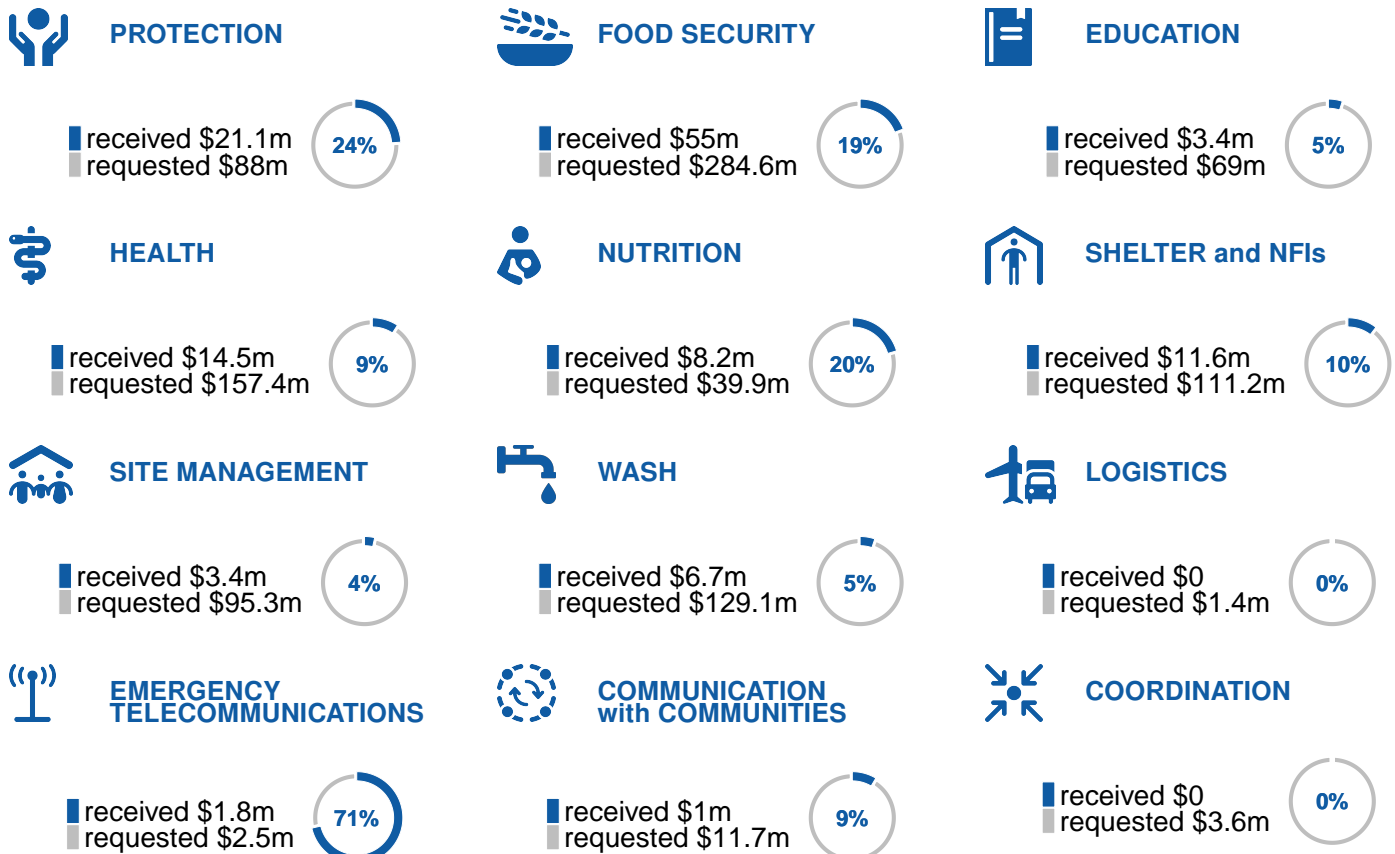


The 2020 Joint Response Plan for the Rohingya refugee response is only **27** per cent funded, as of 16 June 2020, with USD **273** million received against the overall needs of USD **994** million.

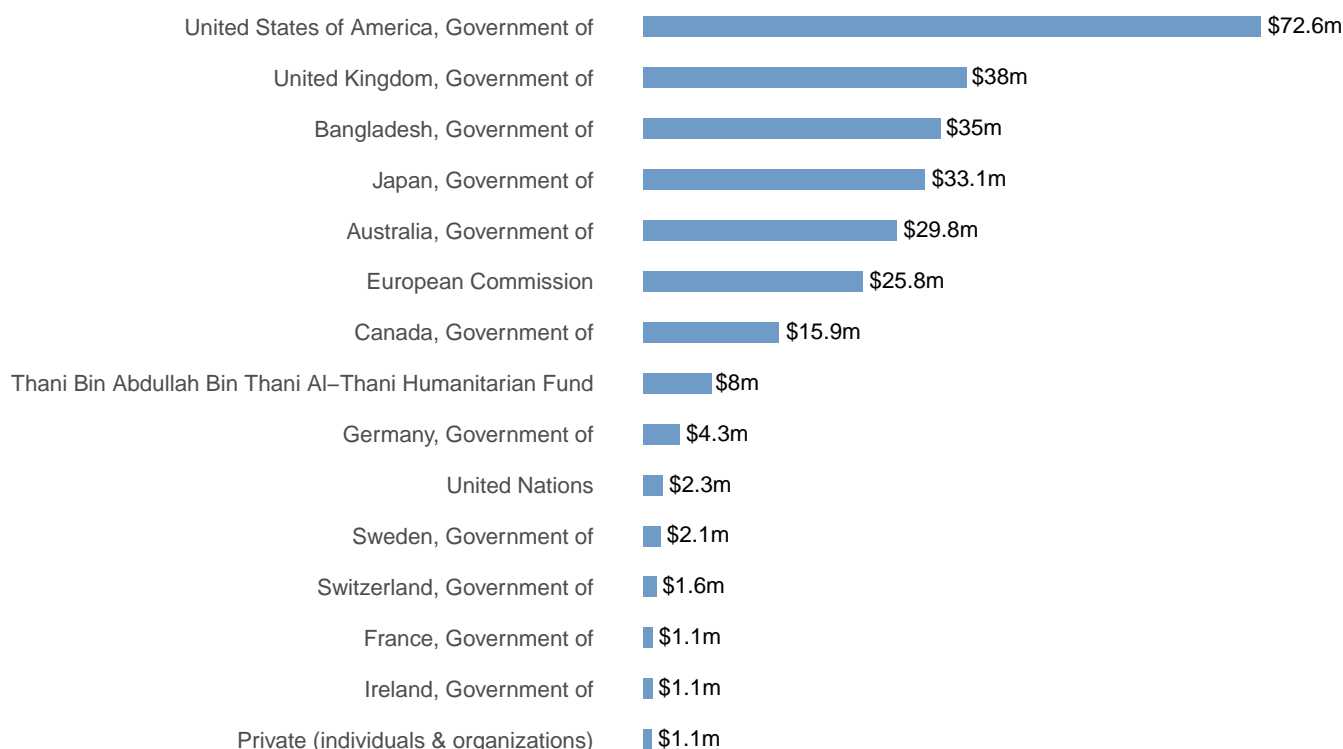
Continued donor support through early disbursement of funds, is essential to agencies better plan interventions, allocate resources and provide consistent assistance to beneficiaries.

JRP Partners are grateful for the ongoing and generous support from donors who have collectively contributed with over USD **1.94** billion since the onset of the crisis, 25 August 2017.

by Sector



by Donor



by Agency

