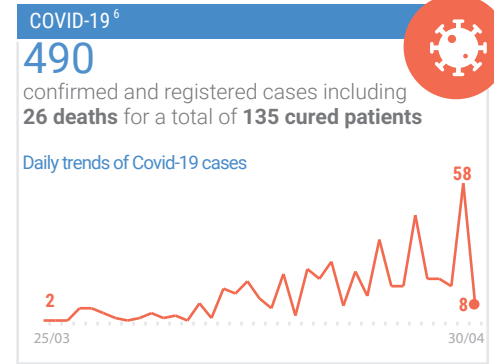
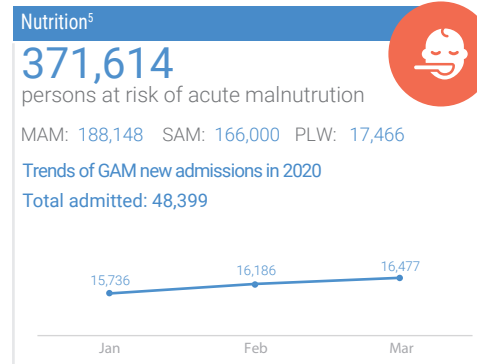
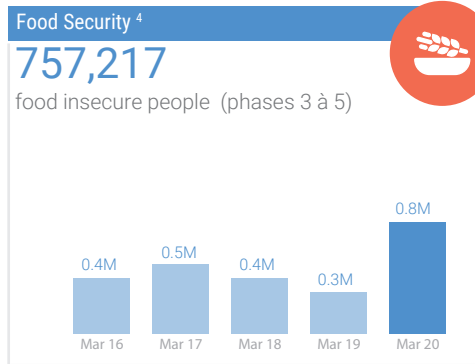
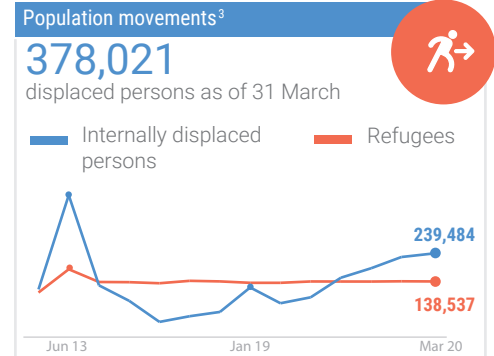
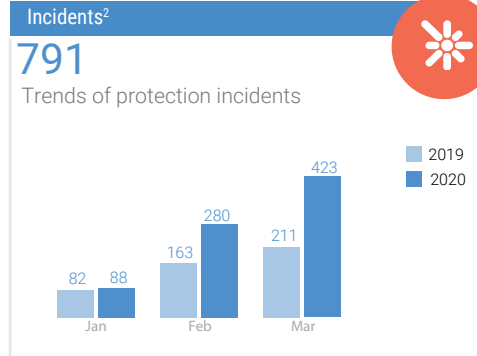
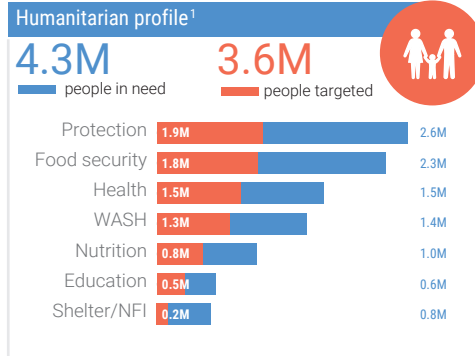


## SITUATION OVERVIEW

The humanitarian situation in Mali continues to worsen. There is increasing population movements due to violence linked to insecurity. By the end of February, total IDPS reached 218,000. At the beginning of 2020, more than 7,500 Nigerien and Burkinabe refugees have arrived due to growing insecurity in the Liptako-Gourma region. In addition, more than 4,000 Malian refugees have returned from Burkina Faso due to the situation in the same region. In March 2020, Mali has experienced additional caseloads brought by COVID-19. The pandemic has slowed down operations as humanitarian partners had to adjust and adapt ways of working as precautionary measures were taken. This has resulted to new operational challenges and increase in operational costs.

## KEY FIGURES



## HUMANITARIAN RESPONSE PLAN FUNDING IN 2020<sup>7</sup> (as 30 april 2020)

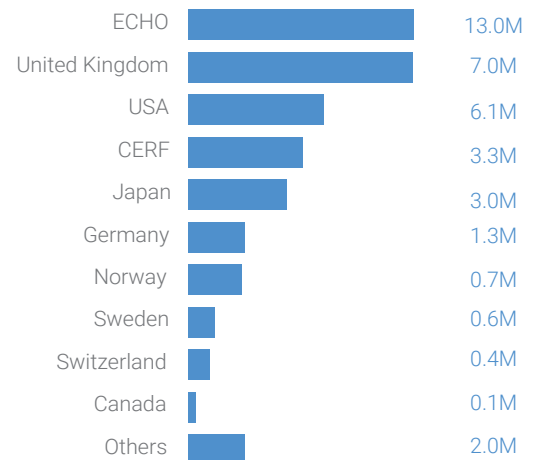
**\$ 390.2 million** REQUESTED (US)

**16.0%** OF HRP FUNDED

**\$ 62.3 million** FUNDS RECEIVED

| Cluster       | Per cent funded per cluster | Requirement | Received | Unmet  |
|---------------|-----------------------------|-------------|----------|--------|
| Food Security | 15.0%                       | 167.5M      | 25.1M    | 142.4M |
| Nutrition     | 12.7%                       | 55.8M       | 7.1M     | 48.8M  |
| Protection    | 13.5%                       | 44.9M       | 6.1M     | 38.9M  |
| Education     | 12.0%                       | 40.5M       | 4.9M     | 35.6M  |
| WASH          | 2.5%                        | 36.6M       | 0.9M     | 35.7M  |
| Health        | 3.1%                        | 19.1M       | 0.6M     | 18.5M  |
| Coordination  | 58.1%                       | 14.4M       | 8.4M     | 6.0M   |
| Shelter & NFI | 0.0%                        | 11.2M       | 0.0M     | 11.2M  |

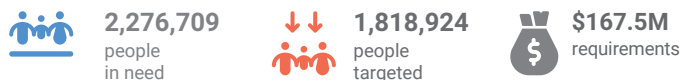
### Donor Contributions (million \$)



**NOTE:**  
\$ 9.3 million funds received including clusters not specified (\$ 9.0M) and multisector (\$0.3M)

## CLUSTERS' ACHIEVEMENTS AND FUNDING - UPDATE<sup>8</sup>

### FOOD SECURITY



#### COVERAGE

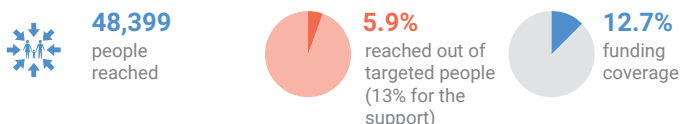


For more information, please contact cluster coordinator Mr Kokou AMOUZOU at [kokou.amouzou@wfp.org](mailto:kokou.amouzou@wfp.org)

### NUTRITION

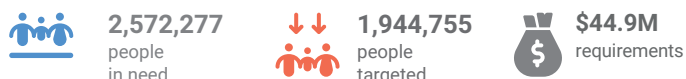


#### COVERAGE

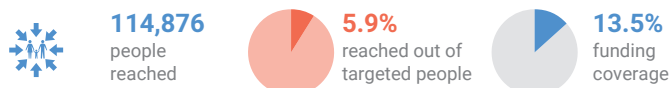


For more information, please contact cluster coordinator Mrs Perrine Look at [plook@unicef.org](mailto:plook@unicef.org)

### PROTECTION



#### COVERAGE

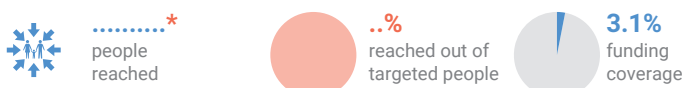


For more information, please contact cluster coordinator Mrs Marie-Emilie Dozin at [dozin@unhcr.org](mailto:dozin@unhcr.org)

### HEALTH

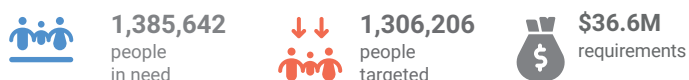


#### COVERAGE

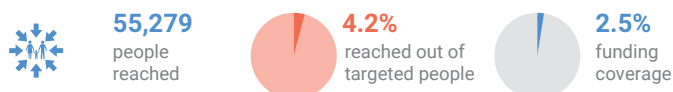


For more information, please contact cluster coordinator Dr Mohamadou Bachir Mbodj at [mbodjm@who.int](mailto:mbodjm@who.int)

### WATER, SANITATION AND HYGIENE



#### COVERAGE



For more information, please contact cluster coordinator Mr Sanoussi Dodo Natatou at [sdodonatou@unicef.org](mailto:sdodonatou@unicef.org)

### SHELTER AND NON-FOOD ITEMS

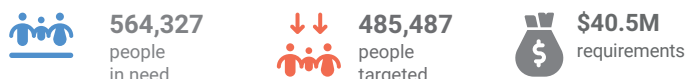


#### COVERAGE

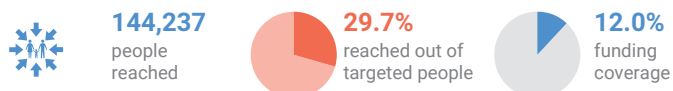


For more information, please contact cluster coordinator Mr Zakaria Bichara Hagggar at [zakariab@unhcr.org](mailto:zakariab@unhcr.org)

### EDUCATION

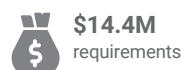


#### COVERAGE

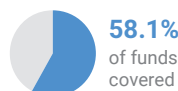


For more information, please contact cluster coordinator Mrs Cécilia Meynet at [cmeynet@unicef.org](mailto:cmeynet@unicef.org)

### COORDINATION



#### COVERAGE



For more information, please contact cluster coordinator Mr David Cibonga at [cibonga@un.org](mailto:cibonga@un.org)

\* Health cluster's figures for assisted people are not available.