



NORTH EAST NIGERIA: EDUCATION SECTOR YEAR IN REVIEW, 2016



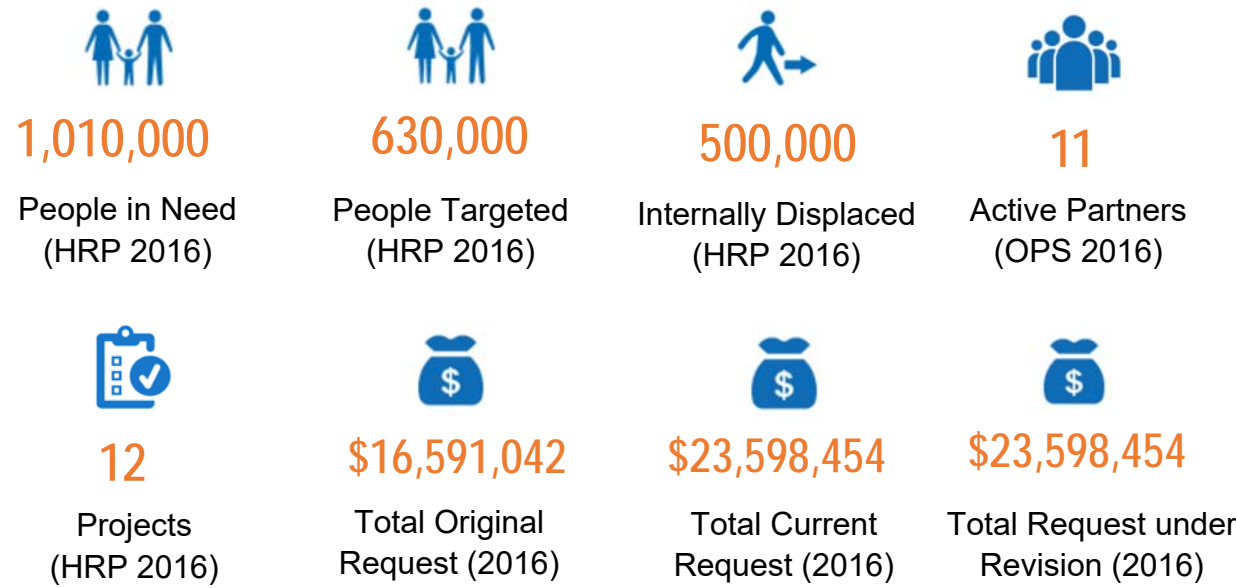
OVERVIEW

Northeast Nigeria faced an emergency rooted in opposition to education, in which over 3 million conflict-affected children were deprived of education or had no access to education.

Up to 645 teachers were murdered (Nigerian Union of Teachers, Oct 2015); 19,000 displaced and 1,200 schools damaged and destroyed (SUBEB, Adamawa, Borno, Yobe).

An entire generation stood a high risk of losing their right to education which would not only have dire consequences upon individual lives but also severe impact upon the wider society.

SECTOR KEY FIGURES



SECTOR OBJECTIVES, INDICATORS AND TARGETS

SO	Provide access to inclusive and protective learning including safe classrooms, with WASH facilities, trained teachers and learning materials for conflict-affected children aged 3-17			Improve the ability of conflict-affected children aged 3-17 to cope in an emergency through relevant learning, life-skills and psychosocial first-aid.			Restore and protect learning in conflict affected states through community advocacy, mobilization and sensitization.		
Indicators	# of children benefitting from safe and equipped classrooms with adequate male and female WASH facilities in affected areas	% of targeted conflict-affected children benefitting from learning supplies	# of learners enrolled in Non-Formal Learning Centers (NFLCs) and alternative education	% of emergency affected learning spaces/ schools in target areas incorporating psycho-social support	# of targeted conflict-affected children benefitting from psychological first aid	# of targeted children with access to life skills lessons in the classrooms/NFE centers	# of targeted schools in conflict affected states with est. SBMCs that are able to conduct emergency preparedness activities	% of affected Teachers/Caregivers and facilitators receiving psychosocial support	% of NFLC /AEs established that meet or surpass criteria for safe, quality, relevant NFLCs
In Need	1,000,000	1,000,000	200,000	1,000	1,000,000	1,000,000	600	11	1,000
Baseline	252,705	102,810 (10%)	35,817	41.8%	90,164	70,517	11	110 (11%)	40%
Target	630,000	500,000 (50%)	30,000	60%	150,000	150,000	134	40%	50%

SUMMARY RESPONSE/ACHIEVEMENTS

