

COVID-19 Overview

- South Sudan in resurgence.
- **Only Omicron variant detected in samples** sent to Uganda for genomic sequencing, compared to exclusive presence of Delta variant in November samples.
- **55.1% decrease in cases** from the week ending 2 January 2022 compared to the preceding week.
- 25 July 2021 travel advisory remains valid with as only difference **72 hrs validity of negative PCR test result** upon arrival.
- **Enhanced preparedness measures** underway for post-New Year re-entry.

Case management

- Funding for **Infectious Disease Unit** managed by IMC ending on 28 February 2022.
- Record number of **2,867 active cases** on 5 January 2022 compared to 157 on 12 December 2021
- During 2021, 29.4% of cases managed at home, 0.1% at health facilities, and 70.3% of cases lost to follow up

Laboratory testing

- Increase in positivity rate from GeneXpert sites (36.0% in the week ending 2 January 2022 compared to 20.5% the preceding week) testing only symptomatic cases. Highest number of cases reported from Hakima, Pariang and Pamir refugee camps and Lankien IDP site.

Vaccination

- So far, **154,087 people** vaccinated with J&J in 251 health facilities in 72 counties. Eight counties still not accessible due to flooding.
- Plans underway to **redistribute Astra Zeneca** vials to high uptake areas to ensure utilization before expiry on 31 January 2022.
- **108,000 doses of J&J** from France received on 30 December.
- Additional **144,000 doses of J&J** from New Zealand and **151,200 of J&J** from Norway with unknown arrival date.

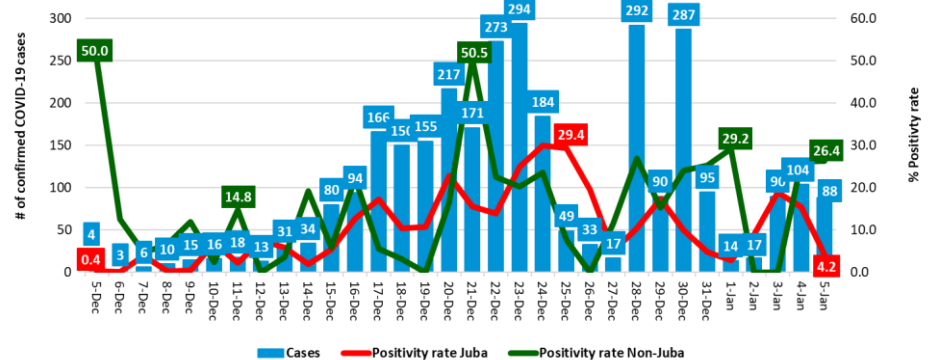
All relevant COVID-19 documents:
<https://covid19partnersplatform.who.int>
 AND
<https://www.humanitarianresponse.info/en/operations/south-sudan/covid-19>

Weekly COVID-19 regional update as of 5 January 2022				
	South Sudan	Kenya	Uganda	Ethiopia
Total positive cases	15,937	304,350	148,609	436,586
Average daily new cases last week	99 (↓)	2,200 (↓)	1,610 (↑)	3,734 (↓)
Total severe cases in IDU	1			
Total reported deaths	136	5,404	3,313	6,988
% Case Fatality Rate	0.9%	1.8% (↓)	2.2% (↓)	1.6% (↓)
Total samples tested	302,487			
% positivity rate (7-day average)	10.4% (↓)			
Total fully vaccinated*	197,946 (1.4%) (↑)	9.1% (↑)	3.5% (-)	1.6% (-)
Total fully vaccinated HCW	18,583 (68.2%)			

Source: South Sudan Ministry of Health Emergency Operations Centre

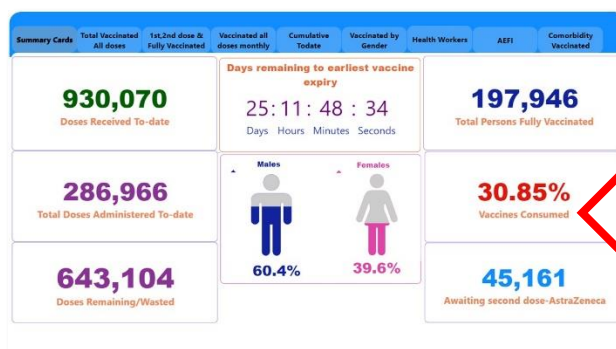
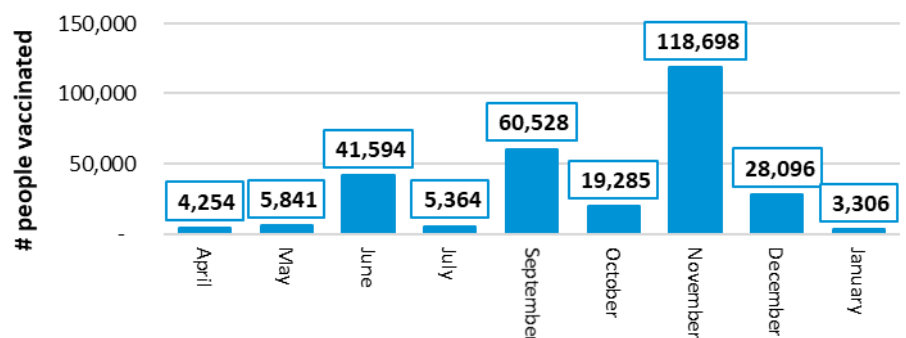
* Fully vaccinated with 2 doses of Astra Zeneca or 1 dose of Johnson & Johnson in proportion to total population (South Sudan National Bureau of Statistics, 2008 Census data extrapolated)

COVID-19 daily confirmed cases and positivity rate in Juba and Non-Juba testing sites**, South Sudan
5 December 2021-5 January 2022



** Juba testing sites include National Public Health Laboratory (NPHL) and private labs
 Non-Juba testing sites include Nimule and GeneXpert sites

Monthly number of COVID-19 vaccine doses administered, South Sudan
7 April 2021-5 January 2022



Check out the COVID-19 vaccination dashboard