

COVID-19 Overview

- 32.4% decrease in cases from the week ending 9 January 2022 compared to the preceding week.
- No booster policy for South Sudan in place. Priority is to increase COVID-19 vaccination coverage of population over 18 up to at least 40%.
- Single dose Johnson & Johnson is preferred vaccine for South Sudan, with Astra Zeneca the second option. No other vaccine types are considered for the time being.

Case management

- Drafting proposal for continued support to Infectious Disease Unit (IDU) managed by IMC from 1 March 2022.
- Record number of 3,337 active cases on 12 January 2022 compared to 2,867 last week.
- Only 7 COVID-19 treatment facilities currently active in South Sudan, including IDU. Urgent need to revitalize treatment facilities for COVID-19 outside of Juba.

Laboratory testing

- Increase in positivity rate from GeneXpert sites (42.2% in the week ending 9 January 2022 compared to 36.0% the preceding week) testing only symptomatic cases. Highest number of cases reported from Hakima and Pamir refugee camps.
- Preparations ongoing to send additional 100 samples for genomic sequencing to Uganda.

Vaccination

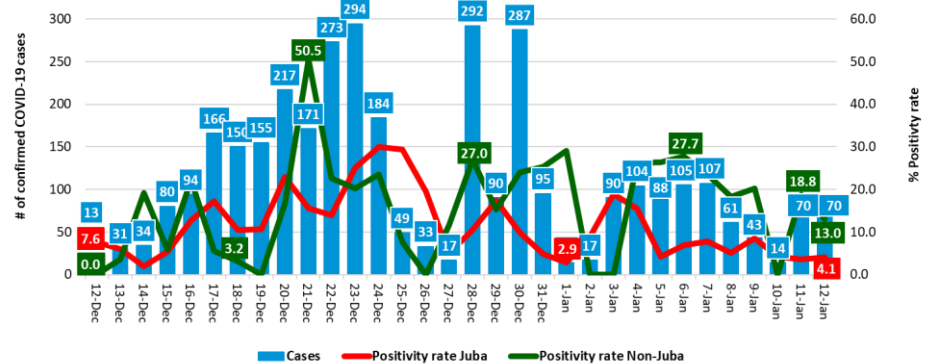
- So far, 162,852 people vaccinated with J&J (46.5% female) in 259 health facilities in 73 counties. Seven counties still not accessible due to flooding.
- Redistribution of Astra Zeneca vials ongoing to ensure their utilization in high uptake areas before expiry on 31 January 2022.
- Expecting 144,000 doses of J&J from New Zealand and 151,200 of J&J from Norway with unknown arrival date.

Weekly COVID-19 regional update as of 12 January 2022				
	South Sudan	Kenya	Uganda	Ethiopia
Total positive cases	16,407	314,490	156,113	450,997
Average daily new cases last week	67 (↓)	1,449 (↓)	1,072 (↓)	2,059 (↓)
Total severe cases in IDU	1			
Total reported deaths	136	5,469	3,370	7,090
% Case Fatality Rate	0.8% (↓)	1.7% (↓)	2.2% (-)	1.6% (-)
Total samples tested	308,854			
% positivity rate (7-day average)	6.9% (↓)			
Total fully vaccinated*	206,895 (1.5%) (↑)	9.5% (↑)	4.5% (↑)	1.6% (-)
Total fully vaccinated HCW	19,266 (70.7%)			

Source: South Sudan Ministry of Health Emergency Operations Centre

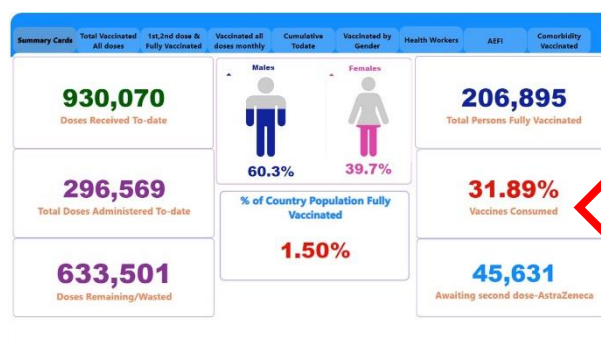
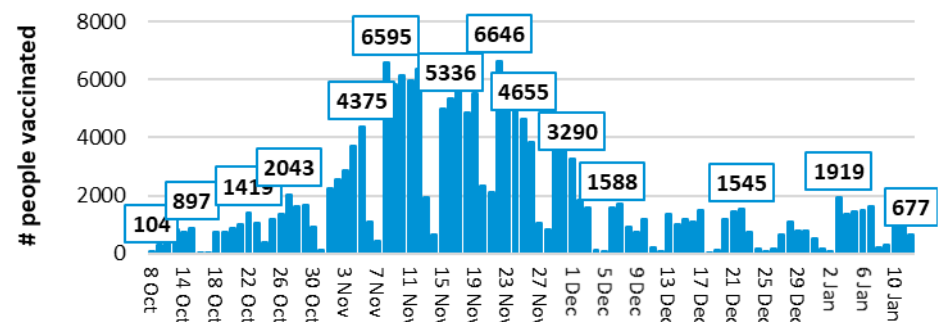
* Fully vaccinated with 2 doses of Astra Zeneca or 1 dose of Johnson & Johnson in proportion to total population (South Sudan National Bureau of Statistics, 2008 Census data extrapolated)

COVID-19 daily confirmed cases and positivity rate in Juba and Non-Juba testing sites**, South Sudan
12 December 2021-12 January 2022



** Juba testing sites include National Public Health Laboratory (NPHL) and private labs
Non-Juba testing sites include Nimule and GeneXpert sites

Daily number of COVID-19 vaccine doses administered, South Sudan
8 October 2021-12 January 2022



Check out the COVID-19 vaccination dashboard

All relevant COVID-19 documents:

<https://covid19partnersplatform.who.int>
AND
<https://www.humanitarianresponse.info/en/operations/south-sudan/covid-19>