

# COLOMBIA

# HUMANITARIAN RESPONSE PLAN SUMMARY

## 2021



Crédito de la foto: UNICEF


Despite the significant advances Colombia made in the last decade with regards to development and the signing of the Final Agreement to End the Armed Conflict and Build a Stable and Lasting Peace in 2016, the year 2020 saw the convergence of multiple factors, which aggravated the humanitarian situation in Colombia. These factors included the persistence of violence<sup>1</sup> in parts of the country, which continue to generate protection challenges and humanitarian needs; the increase in the number of people affected by disasters, the impact of COVID-19 and related measures as well as large mixed migration movements from Venezuela which persist. As a result of these developments, it is estimated that 6.7 million people are in need of humanitarian assistance in the country according to the Humanitarian Needs Overview 2021: *(Please refer to the full document here: <https://bit.ly/3dLIVqH>)*

Against this background, humanitarian actors in Colombia developed the Humanitarian Response Plan for 2021, which reflects the response strategy and key priorities agreed by humanitarian actors for the year. The HRP proposes a coordinated multisectoral response for 1.4 million people and is highly focused on the most vulnerable groups, such as children, women, indigenous communities, displaced or confined populations as well as those with mobility restrictions and limited access to basic goods and services. The HRP is also highly prioritized in terms of its geographical focus and places particular attention to areas, where all humanitarian drivers are converging and where national institutions require complementary humanitarian action to their efforts. These areas are predominantly the departments in the Pacific Coast as well as Norte de Santander. The HRP furthermore highlights the centrality of protection for affected communities.


*This document uses the terminology "affected by armed violence" in line with the terminology used by the Government of Colombia, without prejudice to other characterisations of the context used in other official reports of the United Nations or other humanitarian organisations.*

<sup>1</sup> *The term violence is used without prejudice to the classification of conflicts given by the ICRC: "Colombia: Five armed conflicts – What's happening?", International Committee of the Red Cross, to international humanitarian law and to law 2078 of 2021 to which the humanitarian community in the country adheres. <https://www.icrc.org/en/document/colombia-five-armed-conflicts-whats-happening>*


## Possible scenarios in 2021:




The humanitarian impact of COVID-19 is expected to continue throughout 2021, as vaccination efforts will likely extend to the next year in addition to more infectious virus mutations that have been detected in the country, continuing to have a toll on the economy, albeit to a lesser extent than in 2020, and further compounding Food Security and Nutrition, Health as well as WASH needs with a focus on the protection of the most vulnerable from the disease.



Surge in hostilities by armed and criminal groups, generating humanitarian emergencies, with protection being one of the most urgent needs to minimise, prevent and mitigate the resulting humanitarian impact on the population.



An increase in the requirements for the emergency disaster response, in view of the impact caused by hurricanes ETA and IOTA in various departments of the country in addition to the effects of the "La Niña" phenomenon, is expected.



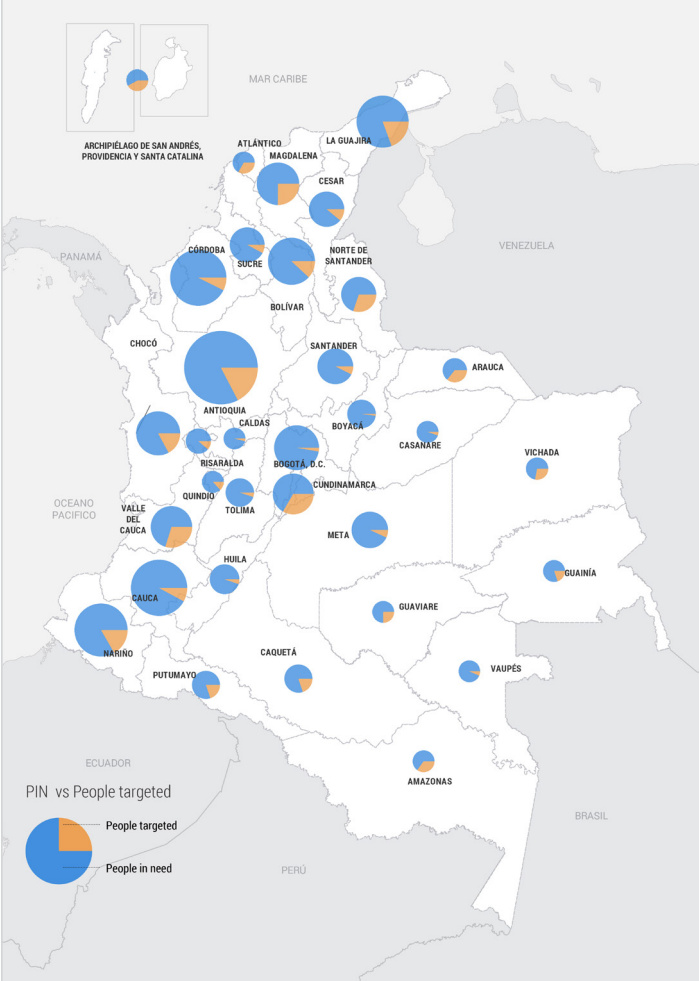
Increased dynamics of double, triple and multiple humanitarian affectedness, including events affecting the migrant and refugeepopulation are expected.

## Overview of the Response Plan

<b>PEOPLE IN NEED</b> <b>6.7M</b>	<b>PEOPLE TARGETED</b> <b>1.4M</b>	<b>REQUIREMENTS (US\$)</b> <b>174M</b>	<b>PROJECTS</b> <b>185</b>	<b>OPERATIONAL PARTNERS</b> <b>47</b>	<b>CHILDREN IN NEED</b> <b>2.3M (34%)</b>
<b>WOMEN IN NEED</b> <b>2.2M (33%)</b>	<b>MEN IN NEED</b> <b>2.3M (34%)</b>	<b>PEOPLE WITH DISABILITIES IN NEED</b> <b>193k (3%)</b>	<b>ETHNIC MINORITIES IN NEED:</b> <b>2.3M (33%)</b>	<b>ELDERLY IN NEED:</b> <b>790k (12%)</b>	

## People targeted

People in need and people targeted



### FOCUS OF THE RESPONSE AND STRATEGIC OBJECTIVES

The Humanitarian Country Team (HCT) is committed to work for communities with humanitarian needs that require an immediate humanitarian response, which complements the actions of the Government. The HCT continues to focus its actions on prevention, timely response, risk management, as well as supporting and strengthening both community and institutional capacities. By doing so, the approach allows the Clusters to not only maximize the impact of their activities, but also to maximize the resources available to them.

For more information, please refer to the full document <https://bit.ly/3aHIQSZ>.

#### Strategic Objective 1:

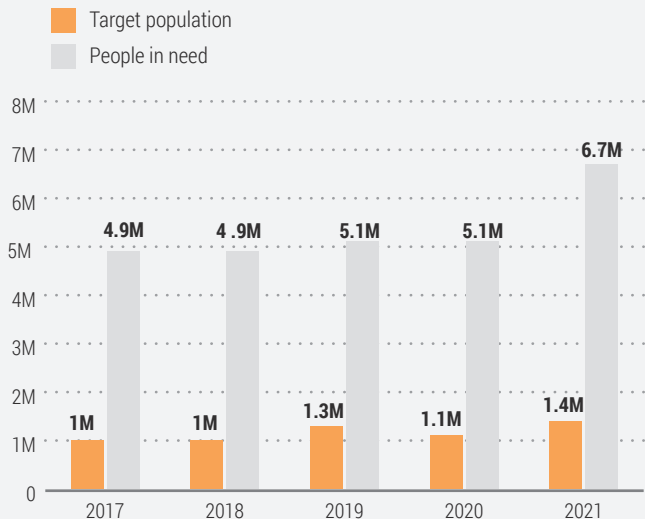
Protect and save life through humanitarian assistance and access to human rights, in response to urgent needs for people affected and at risk of armed violence, natural disasters and COVID-19; with a focus on protection as well as a differential approach to age, gender and diversity.

#### Strategic Objective 2:

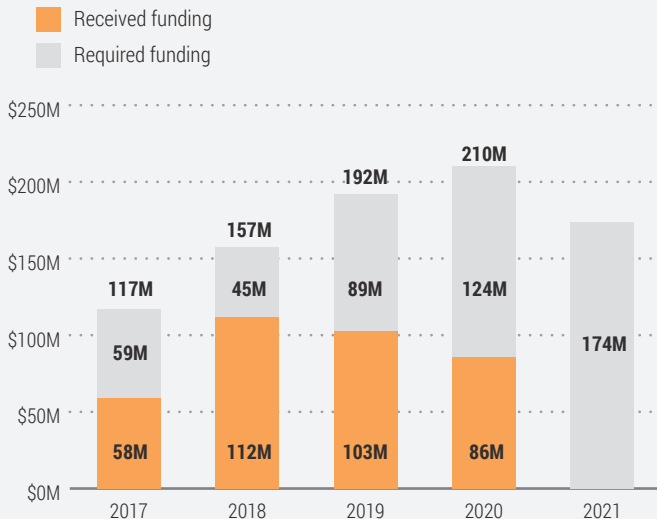
Contribute to durable solutions for the restoration of rights and socio-economic stabilization of people affected by armed violence, natural disasters, and COVID-19; with a focus on protection as well as a differential approach of age, gender and diversity.

## Historical trends

NUMBER OF PEOPLE IN NEED VS TARGET POPULATION



FINANCIAL REQUIREMENTS (US\$)



## Key priorities of the response



### Articulation and Coordination

Recognizing and valuing the responsibility of the State to guarantee the protection of people, as the first responder in an emergency, the Humanitarian Country Team will continue to strengthen effective mechanisms through the implementation of emergency response protocols that allow for the efficient coordination of the complementary response by humanitarian actors in the country, incorporating a two-pronged approach of age, gender and diversity mainstreaming. Accountability and transparency in the response will be guiding pillars of articulation and coordination.



### Protection focus

Considering the humanitarian impacts on the protection of communities, the HRP 2021 will place protection at the centre of its strategy, incorporating it in all phases of the response and promoting collaborative work to prevent and respond to the protection risks that communities may be exposed to, with a particular focus on the protection of the most vulnerable, including women, children and adolescents, ethnic communities, the elderly and persons with disabilities, taking into account a gender-sensitive approach.



### Intersectoral focus

Considering the multiplicity of humanitarian emergencies in Colombia and the diversity of the regional dynamics, where emergencies can trigger multi-sectoral needs, the cross-sectoral approach is considered a priority in order to promote the delivery of comprehensive humanitarian assistance in the prioritised geographic areas and to the prioritised populations. The multi-sectoral dimension and inter-sectoral coordination will be strengthened in 2021 in order to improve the efficiency and quality of humanitarian response.



### GBV

With the support of the national Gender-Based Violence (GBV) subcluster in Colombia and through the Local Coordination Teams on the ground, HCT partners will promote effective strategies to prevent and mitigate GBV in the country.



### PSEA

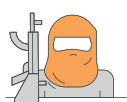
As a key part of the humanitarian response, all humanitarian actors within projects and programmes assisting affected and vulnerable communities have a responsibility to develop and implement actions to prevent and respond to sexual exploitation and abuse based on the standards set by the Secretary-General in the Secretary-General's Bulletin on special measures for protection from sexual exploitation and sexual abuse (PSEA)(ST/SGB/2003/13) and the new strategy defined in 2017 (A/17/818).



### Accountability to Affected People & C4D

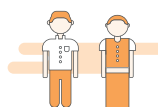
Accountability to Affected People is a central focus of the HRP 2021 by implementing mechanisms to ensure that communities are meaningfully and continuously involved in decisions that directly impact their lives. This is merged with Communication for Development (C4D) in the country, promoting the empowerment of families through participatory communication strategies, enabling the linking of local and community media, ensuring that distant and dispersed populations are reached with information according to their needs.

## Humanitarian response by population group



**4.9M**  
**1M**

People living under the influence of armed and criminal groups



**2.3M**  
**455k**

Children (-18)



**829k**  
**167k**

Host communities



**236k**  
**48k**

People affected by natural disasters requiring humanitarian assistance



**3.6M**  
**742k**

Adults



**1.3M**  
**262k**

Afro-Colombians



**450k**  
**91k**

Internally displaced people



**192k**  
**39k**

People with disabilities



**954k**  
**192k**

Indigenous



**790k**  
**159k**

Elderly




**26k**  
**5k**

Confined people

■ People in need ■ People targeted

## Humanitarian response by cluster

 <b>Protection</b>	<b>PIN: 5.3M</b>	<b>People targeted: 832k</b>	<b>Required: US\$ 64.1</b>
Subcluster - Child Protection	<b>1.9M</b>	<b>281k</b>	<b>US\$ 6M</b>
Subcluster - Gender-Based Violence	<b>1.4M</b>	<b>216k</b>	<b>US\$ 9.9M</b>
Subcluster - Action against mines	<b>268k</b>	<b>92k</b>	<b>US\$ 27.3M</b>

**Scope of the response:** The cluster will promote interventions that prevent, address and restore human rights violations due to the armed violence, disasters and COVID-19, through actions that complement the State's response to the populations exposed to critical protection concerns. Likewise, it will implement actions aimed at reducing the risks and effects of populations exposed to these dynamics, with an emphasis on addressing gender-based violence, action against mines and the protection of children. The Cluster will also work on strengthening community and institutional capacities in order to effectively implement protection actions and increase local coping mechanism.

 <b>Food Security and Nutrition</b>	<b>PIN: 6.2M</b>	<b>People targeted: 432k</b>	<b>Required: US\$34.5M</b>
--	------------------	------------------------------	----------------------------

**Scope of the response:** The Cluster's response is framed as food assistance to save lives and reduce suffering by ensuring immediate access to food, prevention and management programmes for acute malnutrition, in light of the surging food security needs due to the socio-economic implications of the pandemic. Likewise, actions towards the strengthening of capacities to rehabilitate, maintain and/or protect the livelihoods and productive assets of people affected by armed violence and/or natural disasters (especially people in situations of displacement, confinement, attacks against the civilian population, victims of APM/ UXO, gender-based violence and host communities).

 <b>Water, Sanitation and Hygiene (WASH)</b>	<b>PIN: 5.4</b>	<b>People targeted: 220k</b>	<b>Required: US\$13.1M</b>
---	-----------------	------------------------------	----------------------------

**Scope of the response:** The response to COVID-19 remains one a key priority of the WASH cluster, providing timely and quality access to WASH services, through the construction, improvement and provision of safe water and basic sanitation systems to the most vulnerable parts of the population – in particular the regions experiencing a triple affectation through the armed violence, disasters and mixed migration inflows – mitigating the risks of further COVID-19 outbreaks. The Cluster will further strengthen and complement public policy in the regions prioritized by the Cluster by generating institutional and community capacities to improve the quality, coverage and sustainability of WASH services.

 <b>Education in Emergencies</b>	<b>PIN: 3.6M</b>	<b>People targeted: 90k</b>	<b>Required: US\$14.2M</b>
---	------------------	-----------------------------	----------------------------

**Scope of the response:** The objectives of the Cluster will be to safeguard the physical and mental well-being of those affected by armed violence and disasters, and to strengthen institutional capacities to guarantee continued access of children and adolescents to protective educational environments, in particular during the pandemic, supporting institutional facilities to guarantee a continued and safe access to education both remotely and in person. In this context is imperative to implement a comprehensive response by capitalizing on intersectoral and complementary linkages with the actions of the public education system.

 <b>Early Recovery</b>	<b>PIN: 4.5M</b>	<b>People targeted: 203k</b>	<b>Required: US\$28.2M</b>
---	------------------	------------------------------	----------------------------

**Scope of the response:** The cluster will continue to focus on the recovery of livelihoods and the reactivation of local markets in the context of natural or anthropogenic disasters – such as the consequences of Hurricane Iota, and the La Niña phenomenon – well as socio-environmental conflicts, which require attention, management and mediation by prioritizing the reactivation of micro and small businesses that have been affected. In addition, the Cluster will support the victims of armed violence in the process of restoring their rights and stabilizing their communities. This will include the strengthening of both organizational and institutional capacities, the return or relocation of people, the local integration and actions of collective reparation and community reconciliation, among others.

 <b>Shelter</b>	<b>PIN: 2.4M</b>	<b>People targeted: 35k</b>	<b>Required: US\$500k</b>
--	------------------	-----------------------------	---------------------------

**Scope of the response:** The response of the Cluster is based to secure the fundamental rights of people and accountability as a central element for the promotion of dignity. As such, the Cluster will work towards ensuring the physical safety and rights of people affected by armed violence and disasters through access to adequate and dignified shelter and settlement solutions, especially for people in situations of displacement, confinement, restricted mobility and for host communities as well.

## 🏥 Health

**PIN: 6.1M**    **People targeted: 946k**    **Required: US\$15.3M**

**Scope of the response:** The health cluster's response is based on two sectors. First, the direct care in mostly rural territories, where access to health institutions is limited or inexistent through activities related to mental health, psychosocial support, sexual and reproductive health, maternal and perinatal health as well as public health, which will be addressed through direct actions in communities with limited access to these services. Second, the strengthening and/or support to the development of local capacities among health authorities and institutions, including epidemiological surveillance, strengthening community capacities for preventive health and early detection of important public health events, including medicine community.

## ✖️ Coordination

**PIN: N/A**    **People targeted: N/A**    **Required: US\$4M**

**Scope of the response:** Through the coordination provided by OCHA, the humanitarian architecture will strengthen the national and regional efforts in order to provide a more efficient and effective response to communities in need of humanitarian assistance. It remains imperative to achieve a coordinated and complementary response to the State's activities and other coordination bodies in the country, such as the Interagency Group for Mixed Migration Flows (GIFMM) in a country, where four simultaneous humanitarian crises affect the most vulnerable. This entails strong coordination and information management between the Humanitarian Country Team, the Inter-Cluster Group, capitalizing the capacities of the local coordination and humanitarian teams.

## 👤 Refugees and Migrants

**PIN: 4.13M**    **People targeted: 1.8M**    **Required: US\$640.9M**

**Scope of the response:** The interventions will prioritise humanitarian needs and integration barriers, and mitigate protection and health risks, in line with the strategic objectives formulated by the Regional Platform for the Response to Refugees and Migrants - R4V, considering the impacts of the health emergency in the face of the COVID-19 pandemic. In terms of the target population, priority will be given to the care, protection and integration of people with specific needs, such as children and adolescents, women, the elderly, people with disabilities, the cross-border indigenous population and people living in areas with the presence of armed groups.

## How to contribute

### Contribute to the Humanitarian Response Plan



The role of humanitarian partners in achieving an effective response to the immediate needs of the most vulnerable communities must be based on accountability in order to provide the most effective and efficient response possible. In order to support a coordinated response, donors are asked to contribute to the HRP to ensure the funding of projects prioritized by the clusters in the response plan of the HCT. Direct financial contributions to accredited relief agencies are one of the most valuable and effective forms of emergency response. For more information, please visit:

[humanitarianresponse.info/en/operations/Colombia](http://humanitarianresponse.info/en/operations/Colombia)

### Contribute through the Central Emergency Response Fund (CERF)



CERF provides rapid seed funding for life-saving actions at the onset of emergencies and for critical, underfunded humanitarian operations in protracted crises. CERF administered by OCHA receives contributions from various donors, mainly governments, but also private companies, foundations, charities and individuals, which are combined into a single fund. These funds are used for crises anywhere in the world. The CERF funding in 2020 formed a substantial part of the in 2020 received funding and not only secured the continuation of live-saving response activities in the most affected departments, but also enabled humanitarian actors to scale up their response to underfunded emergencies, targeting Gender-Based-Violence (GBV) survivors through women-led organizations in the country, among others.

### Register and monitor your contributions



OCHA manages the Financial Tracking Service (FTS), which stores all humanitarian contributions (cash, in-kind, multilateral and bilateral) to emergencies. Its purpose is to make the contributions of humanitarian donors visible and to highlight the funding gaps in the response plan. Please report your contributions to the FTS via email [fts@un.org](mailto:fts@un.org) or via the online contribution report form at <http://fts.unocha.org>