

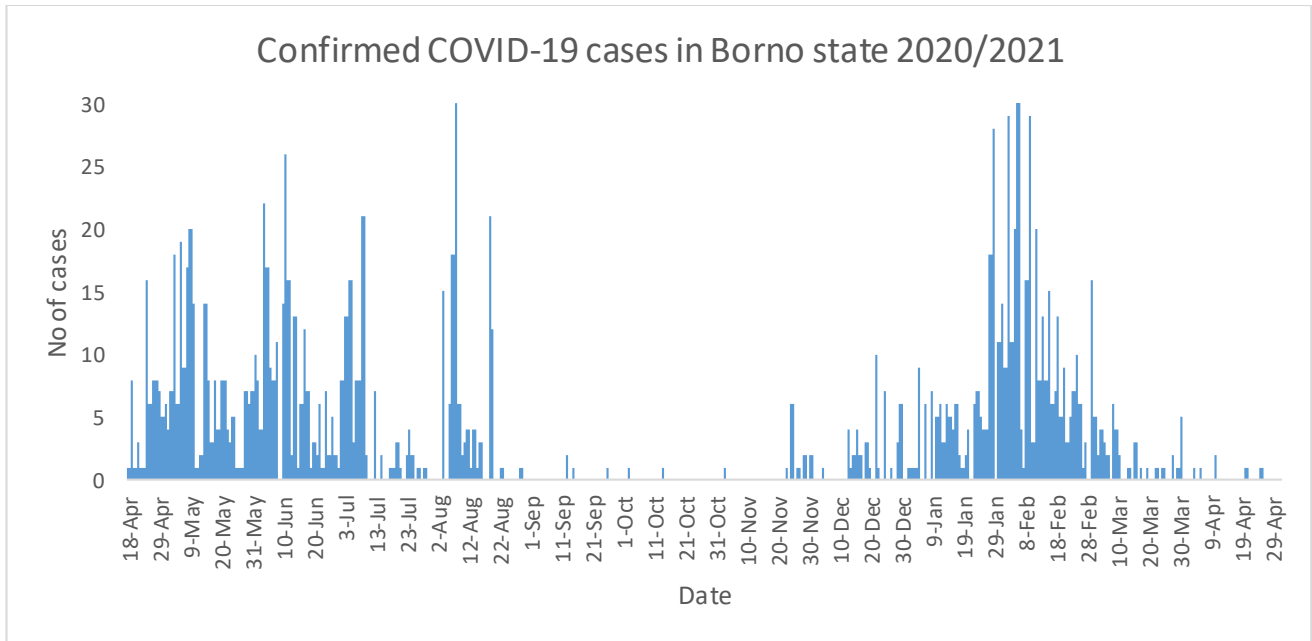


## BORNO STATE MINISTRY OF HEALTH

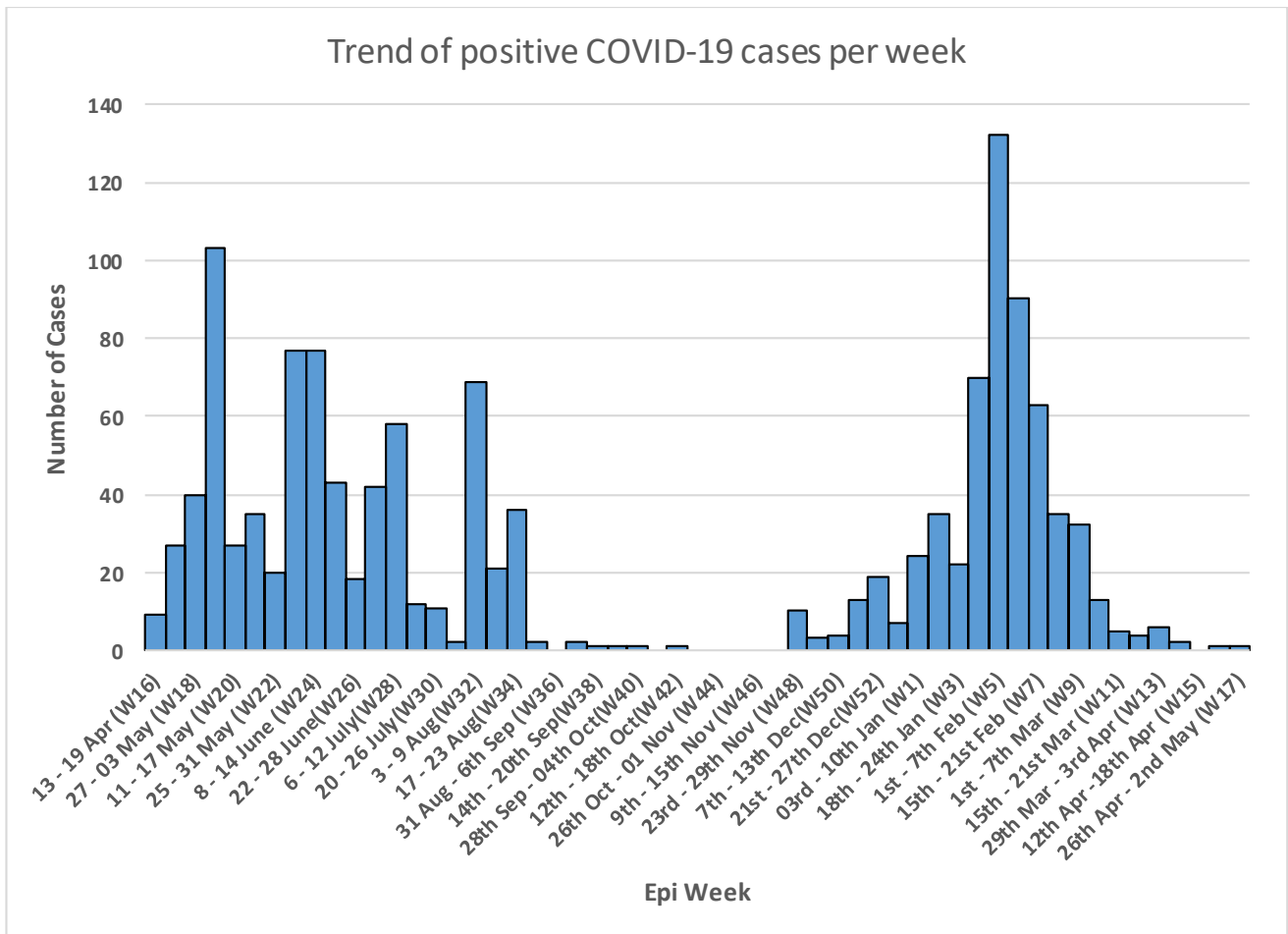
<b>TITLE</b>	<b>COVID-19 WEEKLY SITUATION REPORT, EMERGENCY OPERATIONS CENTER, BORNO STATE</b>
<b>EPI WEEK</b>	17
<b>DATE</b>	26 <sup>th</sup> April – 02 <sup>nd</sup> May 2021

### Epidemiological summary

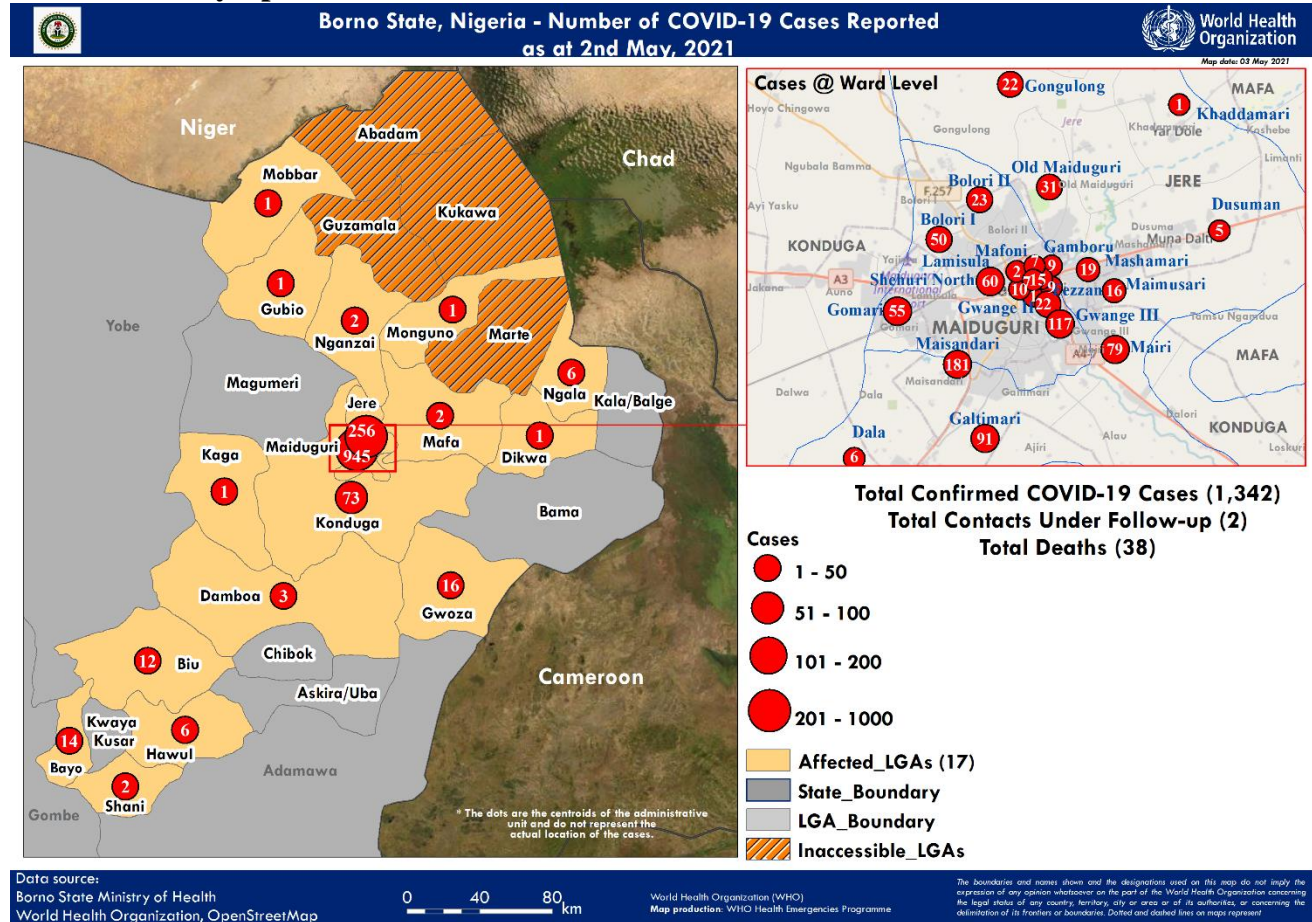
- 1 new case confirmed for the reported week
- Total number of Confirmed Cases as at end of epi-week 17 stands at 1,342
- 2 active case receiving care.
- Total number of patients discharged for the week – 0
- Cumulative number discharged so far – 1,300
- No death recorded in week 17
- Total associated deaths – 38 (26 in Isolation facilities and 12 community death.)
- Distribution of confirmed cases by LGA - 256 from Jere, 945 from MMC, 16 from Gwoza, 3 from Damboa, 13 from Bayo, 12 from Biu, 1 from Gubio, 1 from Munguno, 1 from Kaga, 1 from Mobbar, 73 from Konduga, 2 from Nnganzai, 2 from Shani, 6 from Hawul and 6 from Ngala LGAs
- Total number of contacts line listed for follow up – 6,501
- Total initial Samples tested so far in UMTH laboratory stands at 20,371
- Cumulative positivity rate 7%
- Cumulative samples collected for week 17 were 48
- EOC meets Monday and Friday to review the activities of all the pillars under the leadership of the IM



**FIG 1: Summary of cases with dates**



**FIG 1b: Weekly Epi-curve of COVID 19 cases in Borno State**



**TABLE 1: Summary of cases**

S/No.	Description	Total for epi-week 17 (Monday-Sunday)	Cumulative (18-Apr to 02nd May 2021)
<b>CASES</b>			
1	Suspected cases	5	815
2	Lab-confirmed positive cases	1	1,342
3	Lab-confirmed positive cases in Health care Worker(s)	0	81
4	Probable cases	0	0
5	Rumour under investigation	0	29
6	Number of confirmed cases on admission	2	1,318
7	Number of confirmed cases discharged	0	1,300
8	Number of deaths in confirmed cases	0	38

9	Number of deaths in Health care workers	0	1
10	Number of deaths in suspected cases	0	0

**Table 2: Summary of Contacts Follow up**

S/No.	Description	Total for epi-week 17 (Monday-Sunday)	Cumulative (18-April to 2nd May 2021)
1	Contacts listed	10	6,581
2	Contacts seen	10	14,625
3	Contacts currently under follow up	2	14,502
4	Contacts symptomatic	0	151
5	Contacts confirmed positive	0	167
6	Contacts who completed 14 days follow up	8	5,927
7	Contacts lost to follow Up	0	5

**Table 3: Summary Table Laboratory Test Results**

S/No.	Description	Total for epi week 17	Cumulative (18-Apr to 02nd May 2021)
1	Number of specimens collected	48	20,378
2	Number of pending laboratory samples	0	0

## **Coordination:**

- Coordination meeting held at the Borno State Public Health Emergency Operations with SMOH and Partners on Monday and Friday.
- WHO, UNICEF and other partners continue to support the response

## **Surveillance**

- 1 new confirmed case reported for week 17, total confirmed cases stand at 1,342.
- Total contacts being monitored closely – 2
- Intra/inter country border screening continues across the state.

## **Laboratory:**

- Cumulative Positivity rate is 7.1 percent
- Test per million of Population: 2,848 Case per million Population: 202
- Total COVID 19 test conducted 20,371 by Borno State.

## **Case Management:**

- 2 case in self isolation at the end of epi-week 17.
- No patient discharged at the end of the week
- Total discharges –1,300, No death reported for the week.

## **Infection Prevention and Control**

- Continued supportive supervision of health facilities across the state.

## **Risk communication/Social mobilization:**

- Jingles on COVID-19 protocols, rumors and misconceptions on vaccination, de-stigmatization is ongoing in Kanuri, Hausa, Shuwa Arab, and Mbura on BRTV, DANDAL KURA and PEACE FM radio station supported by UNICEF, IRC, Translators Without Borders and UK Aids.

**MHPSS:**

- MHPSS responders (WHO, IOM) provided counselling and sensitized individuals on standard precaution of COVID-19 transmission and preventive measures.

**Challenges:**

- Low case detection.
- Sub-optimal sample collection.

**Next Step:**

- Strengthen surveillance and alert investigation.
- Improve sample collection and testing at LGAs and health facilities.
- Public enlightenment campaigns on use of face mask and hand washing practices.