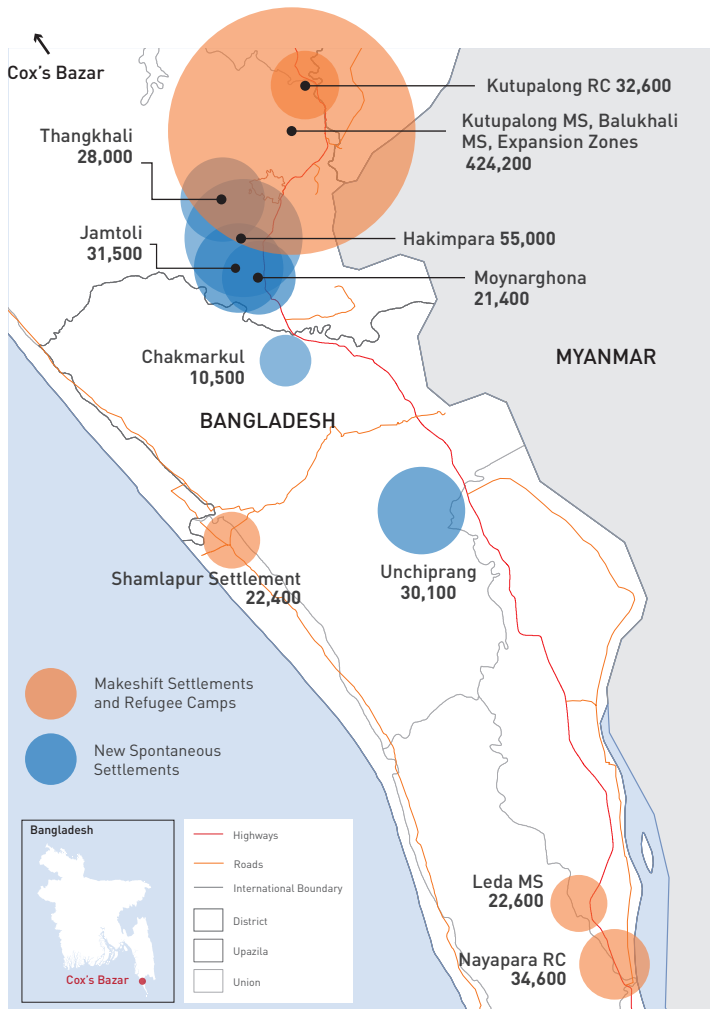


## KEY STATS\*

 **815,000**  
total number of Rohingya refugees in Cox's Bazar.

 **603,000**  
Cumulative arrivals since 25 August.

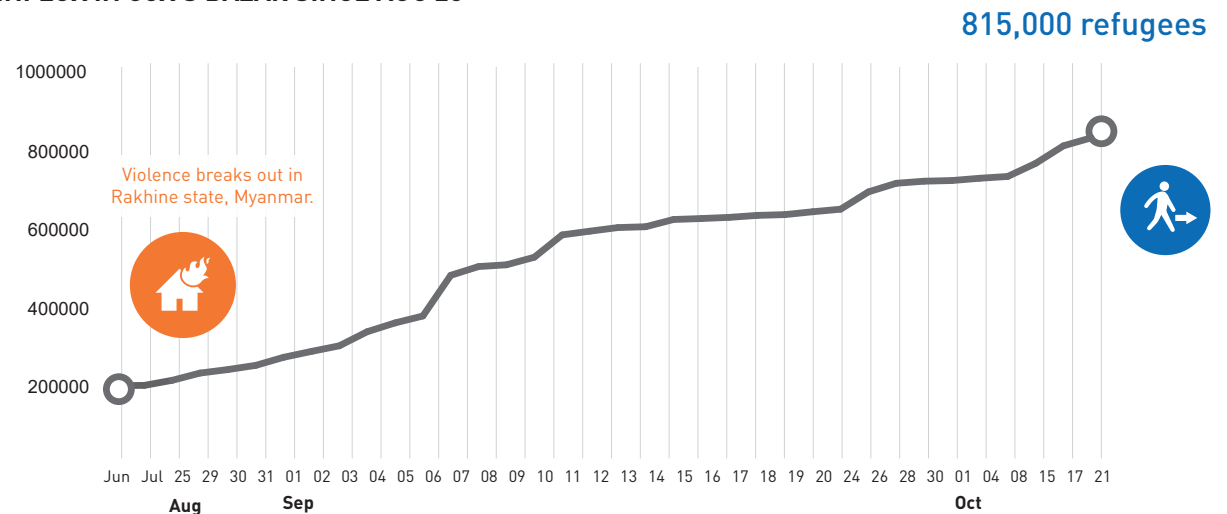
## REFUGEE SITES BY POPULATION AND LOCATION TYPE\*



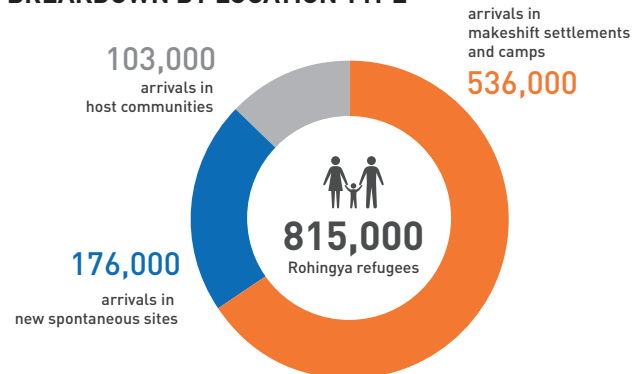
## OVERVIEW

As of 21 Oct 2017, at least 815,000 Rohingyas are estimated to be sheltering in Bangladesh, having fled violence and persecution in Myanmar. Violence which began on 25 August has triggered a massive and swift refugee influx across the border - an estimated 603,000 people have arrived. These refugees have joined some 213,000 people who were already in Bangladesh following earlier waves of displacement. The Rohingya population in Cox's Bazar is highly vulnerable, many having experienced severe trauma, and are now living in extremely difficult conditions.

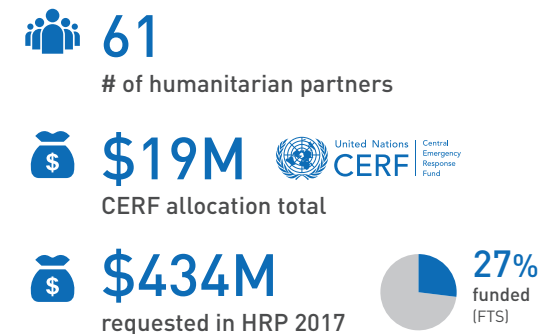
## INFLUX IN COX'S BAZAR SINCE AUG 25\*



## BREAKDOWN BY LOCATION TYPE\*



## PARTNER NUMBERS AND FUNDING



The boundaries and names shown and the designations used on this map do not imply official endorsement or acceptance by the United Nations.

\*Situation Report: Rohingya Refugee Crisis - 22 Oct 2017

Creation date: 23 Oct 2017

Feedback: yzhu@iom.int

www.reliefweb.int