

BURUNDI

Humanitarian Response Plan 2021

MARCH 2021

RESPONSE FRAMEWORK

2

Strategic objectives and 6 specific objectives*

To save lives and mitigate suffering, morbidity and extreme vulnerability due to emergencies are reduced for 737,000 people through a multisectoral response, including a protection response by the end of 2021.



To reduce vulnerabilities and build resilience, improved access to quality assistance and services is provided to 1.06 million people, including those affected by the socio-economic impacts of Covid-19.



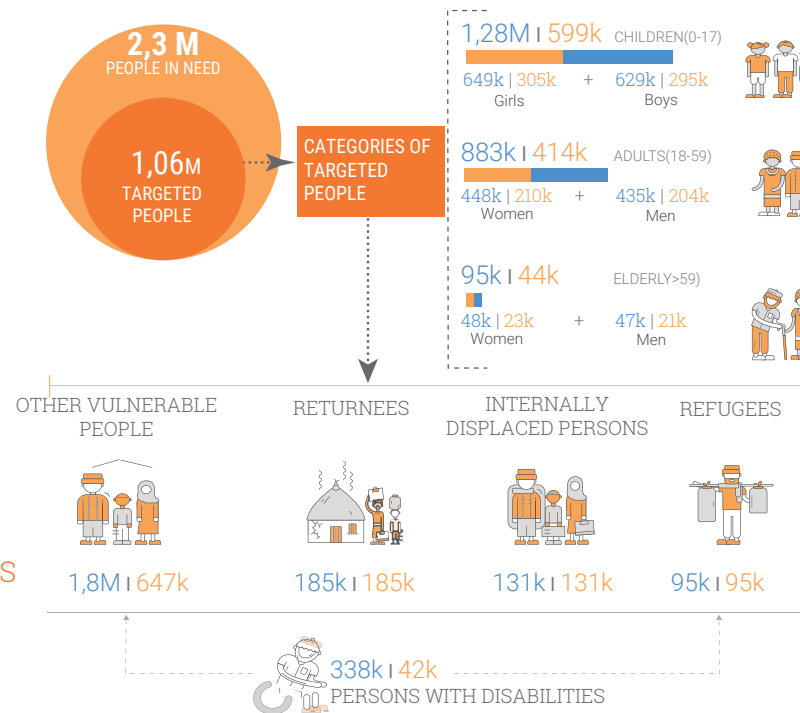
195 MILLION
REQUIRED

62 PARTNERS

72 PROJECTS
IN THE PLAN

PEOPLE-ORIENTED RESPONSE

XX : In need XX : Targeted



HUMANITARIAN RESPONSE PER SECTOR

	SHELTER AND NON FOOD ITEMS	WATER, SANITATION AND HYGIENE	EDUCATION	NUTRITION	PROTECTION	HEALTH	FOOD SECURITY	REFUGEE RESPONSE	COORDINATION	LOGISTICS	REPATRIATION PLAN
TARGETED PEOPLE VS PEOPLE IN NEED	177K / 248K	541K / 541K	157K / 157K	478K / 704K	298K / 450K	269K / 578K	737K / 2M	95K / 95K			143K / 143K
REQUIRED FUNDS (US\$)	16,3M	10,8M	5,1M	14,1M	21,5M	7,5M	25,8M	54,2M	1,8M	1,3M	36,2M
NUMBER OF ACTORS IN THE PLAN	9	5	7	3	42	8	8	9	1	1	10

* See HRP 2021 pages 41 to 43