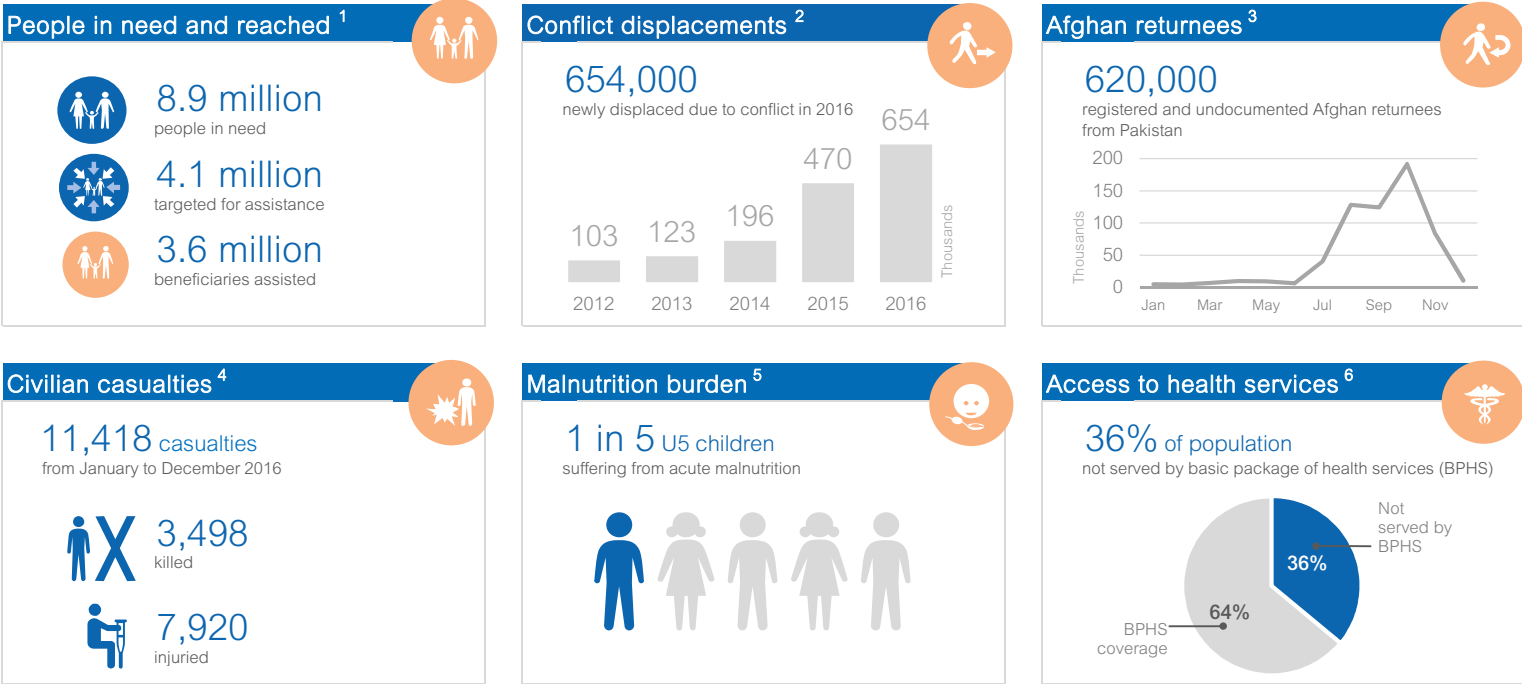


SITUATION OVERVIEW

In Afghanistan, the humanitarian situation in 2016 was defined by the increase in the geographical spread and intensity of the conflict. By the end of the year, some 654,000 Afghans had fled their homes due to conflict, 620,000 had returned to Afghanistan following a deterioration in the protection environment in Pakistan, and 11,418 civilians had been either killed (3,498) or injured (7,920) as a result of fighting between Afghan and pro-government forces and Non State Armed Groups (NSAGs). The Taliban assault on Kunduz in October 2016 almost a year to the day after it previously fell into NSAG hands, followed successive efforts throughout the year to take other key provincial capitals, including Lashkar Gah, Farah and Maimana, underlining the tenuous security situation across many parts of the country and the precariousness of the safety and livelihoods of populations inhabiting these areas.

KEY FIGURES



CONSOLIDATED HUMANITARIAN FUNDING 2016

HUMANITARIAN RESPONSE PLAN AND FLASH APPEAL ⁷

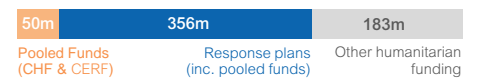


Requirements by cluster (million \$)

Per cent funded by cluster

Cluster	Requirements (million \$)	Per cent funded	funded million \$	Unmet million \$
Refugees and Returnees	146.2	64%	94.0	52.2
Food Security & Agriculture	91.6	78%	71.6	20.0
Emergency Shelter & NFIs	74.6	58%	43.4	31.2
Nutrition	69.7	85%	59.5	10.2
Protection	59.7	53%	31.5	28.2
Health	45.2	70%	31.5	13.7
WASH	27.1	77%	20.9	6.2
Aviation	16.4	99%	16.3	0.2
Coordination	12.0	67%	8.0	4.0

OVERALL HUMANITARIAN FUNDING ⁸



Key donors Contributions (million US\$)

United States	160
European Commission	53.1
United Kingdom	51.6
Germany	48.7
Japan	47.2
Norway	22.2
Australia	20.2
Sweden	20.2
Republic of Korea	18.7

STRATEGIC OBJECTIVES

- 1 Protection of civilians from armed conflict
- 2 Response to conflict displaced, refugees and vulnerable returnees
- 3 Acute health and natural disaster emergencies
- 4 Treatment and prevention of acute malnutrition
- 5 Context analysis and coordinated needs assessment

EMERGENCY SHELTER & NFIs

0.8 million people in need

The significant returnee influx increased the Cluster's targets and response, in addition to conflict displaced and natural disaster caseloads.

68%
reached / target



Adult male 106k
Adult female 107k
Boys (U18) 165k
Girls (U18) 156k

Needs

Overcrowded shelter conditions, limited or no household items, lack of privacy, as well as exposure to harsh weather conditions, the latter of which has particularly affected vulnerable families. Many IDPs and returnees live in makeshift structures or abandoned buildings, with access to land and threat of eviction impacting reintegration.

Response

Assistance provided improved living conditions of the affected population. Temporary shelters provided privacy and mitigated against protection risks, as well as reduced overcrowded conditions. Families were also provided with materials to enable them to cover the roof of abandoned buildings.

784,000
people targeted

533,000
people reached

For more information, contact: kowdonko@unhcr.org

Last updated: 31 Dec 2016

FOOD SECURITY & AGRICULTURE

1.8 million people in need

The significant increase in conflict IDPs and rapid influx of returnees from Pakistan led to an increased need in food assistance requirements.

84%
reached / target



Adult male 895k
Adult female 593k
Boys (U18) -
Girls (U18) -

Needs

Ongoing conflict impacted farmers' access to land, resulting in decreased household food production and increased dependency on markets. Shocks such as pest attacks, wheat rust and localized flooding damaged agricultural land. IDPs and returnees had increased need of assistance during the winter and peak hunger season.

Response

Among conflict IDPs, food assistance was more of a priority than livelihood support given limited access to land to cultivate. Livelihood support to people who lost crops due to natural disasters took precedence over provision of food assistance. Severely food insecure people received food assistance throughout the year.

1,776,000
people targeted

1,488,000
people reached

For more information, contact: abdul.majid@fao.org

Last updated: 31 Dec 2016

HEALTH

3.7 million people in need

The expanding and worsening conflict remained the main driver of the crisis for the emergency health response in 2016.

44%
reached / target



Adult male 282k
Adult female 427k
Boys (U18) 275k
Girls (U18) 633k

Needs

Along with the significant increase in the number of conflict IDPs, there was an additional need for trauma and IDP-focused interventions in many areas. Both conflict and natural disasters have not only impacted the physical and psychological health of those affected, but also caused significant damage to and disruption of the health care delivery system.

Response

High risk conflict-affected districts were supported with first aid and specialized trauma care services, emergency primary health care or mobile services were provided in targeted white areas, deliveries were conducted by skilled birth attendants, outpatient consultations were conducted and outbreaks were responded to.

3,717,000
people targeted

1,618,000
people reached

For more information, contact: altafm@who.int

Last updated: 31 Dec 2016

NUTRITION

2.9 million people in need

The continuing high burden of malnutrition in children under 5 and PLW, and increase in IDPs and returnees increased nutrition service demands.

125%
reached / target



Adult male -
Adult female 1063k
Boys (U18) 166k
Girls (U18) 194k

Needs

Increased vulnerability, unsafe water and hygiene practices, acute food insecurity, limited access to secure livelihoods and poor living conditions associated with displacement has exacerbated the risk of children becoming undernourished. The conflict and the returnee influx has also exacerbated underlying conditions causing malnutrition.

For more information, contact: mfaisal@unicef.org

Response

Treatment of acutely malnourished children and PLW in priority areas was supported, with IYCF promotion conducted. 383 staff were trained on survey and assessment methodologies, with 16 nutrition surveys completed in targeted provinces. The conflict expansion and returnee influx led to overstretched capacity of partners.

Last updated: 31 Dec 2016

PROTECTION

1.9 million people in need

Growing insurgency and spread of conflict led to unprecedented levels of displacement, weakened protection of civilians and decreased respect for IHL.

40%
reached / target



Adult male 154k
Adult female 225k
Boys (U18) 120k
Girls (U18) 132k

Needs

The conflict destroyed homes, livelihoods, property, caused forced displacement and restricted civilian access to basic services. Displaced children were subject to abuse and exploitation, interrupted school attendance and child labour. Protection of civilians remained critical with 11,418 civilian casualties in 2016 including 11% women and 31% children.

For more information, contact: countin@unhcr.org

Response

Targeted protective services reached vulnerable conflict and natural disaster affected individuals. Community-based prevention and response initiatives were conducted, with prioritized mine/ERW impacted populations provided with Mine Risk Education.

Last updated: 31 Dec 2016

WATER, SANITATION & HYGIENE

1.8 million people in need

An unprecedented number of IDPs and returnees, natural disaster affected, host communities and refugees required WASH services.

82%
reached / target



Adult male 126k
Adult female 126k
Boys (U18) 292k
Girls (U18) 292k

Needs

Over half of IDPs and host communities were assessed as needing WASH assistance, in addition to undocumented returnees and natural disaster affected people. Water and hygiene needs are prominent once people on the move settle or joint host communities as sanitation services are more often shared.

For more information, contact: rbhusal@unicef.org

Response

Timely access to safe drinking water and provision of adequate and gender sensitive sanitation was provided, in addition to promotion of appropriate hygiene practices. Meeting the water and sanitation needs of people on the move is challenging, with response focusing on settlement areas and host communities to address service provision.

Last updated: 31 Dec 2016

REFUGEES & RETURNEES

0.8 million people in need

The unexpected return of more than 1 million Afghans required assistance, in addition to the continued hosting of a significant number of refugees from Pakistan.

81%
reached / target



Adult male 135k
Adult female 133k
Boys (U18) 204k
Girls (U18) 202k

Needs

Over 1 million registered refugees and undocumented Afghans increased both immediate life-saving and medium-term reintegration needs. Afghanistan continued to host 125,000 refugees who fled military operations in North Waziristan, with ongoing humanitarian and evolving needs for access to services.

For more information, contact: corcoran@unhcr.org

Response

Registered refugee returnees received a repatriation package of an unconditional cash grant and basic services. Vulnerable undocumented returnees received life-saving, post-arrival assistance and onward transportation at border crossing points. Refugees in Khost and Paktika received multi-sector assistance to support ongoing needs.

Last updated: 31 Dec 2016