



# Situation Report

## Adamawa State Ministry of Health



<b>TITLE</b>	<b>2019 Cholera Outbreak Situation Report</b>
<b>SERIAL NUMBER</b>	<b>24</b>
<b>EPID-WEEK</b>	<b>32</b>
<b>DATE</b>	<b>9<sup>th</sup> August, 2019</b>

### Highlights

- Twenty-two (41) new cases reported from 7<sup>th</sup> to 9<sup>th</sup> August, 2019 from the 3 LGAs (Yola North, Yola South and Girei) bringing total case count for all four LGAs (including Song) to 586.
- No new death reported within the reporting period (CFR=0.68 %).
- A new ward affected. However, the settlement affected is very close to settlements already reporting cases. Total number of wards which reported at least one suspected case stands at 18.
- Number of water points chlorinated remain grossly inadequate

### Epidemiological Summary

The total number of cases reported as at 9<sup>th</sup> August, 2019 stands at 586, with 4 deaths (CFR=0.68 %), Yola North has 359 cases with 2 deaths (CFR= 0.56 %); Girei has 164 cases with 1 death (CFR= 0.61 %), Yola South has 62 cases with 1 death (CFR= 1.61 %) and Song has 1 case with 0 death (CFR= 0 %). So far, 149 samples yielded growth suggestive of *Vibrio cholerae* on culture and results of 7 isolates from the reference laboratory revealed 01 serotype.

	Yola North	Girei	Yola South	Song	Total
<b>Cases</b>					
New suspected Cholera cases	27	6	8	0	41
Cumulative suspected cholera cases	359	164	62	1	586
<b>Deaths</b>					
New deaths	0	0	0	0	0
Cumulative deaths	2	1	1	0	4
<b>Laboratory</b>					
Number of specimens collected	196	59	32	1	288
Number of specimen (RDT +ve)	114	43	17	1	175
Number of specimen (Culture +ve)	103	31	14	1	149
Number of specimen (01 serotype)	5	1	1	0	7

Table 1: Number of cases, deaths and samples tested for Cholera in Adamawa State, as at 9<sup>th</sup> August, 2019.

**Adamawa State - Nigeria: Number of Suspected Cholera Cases Reported Between 15th May to 9th August, 2019**

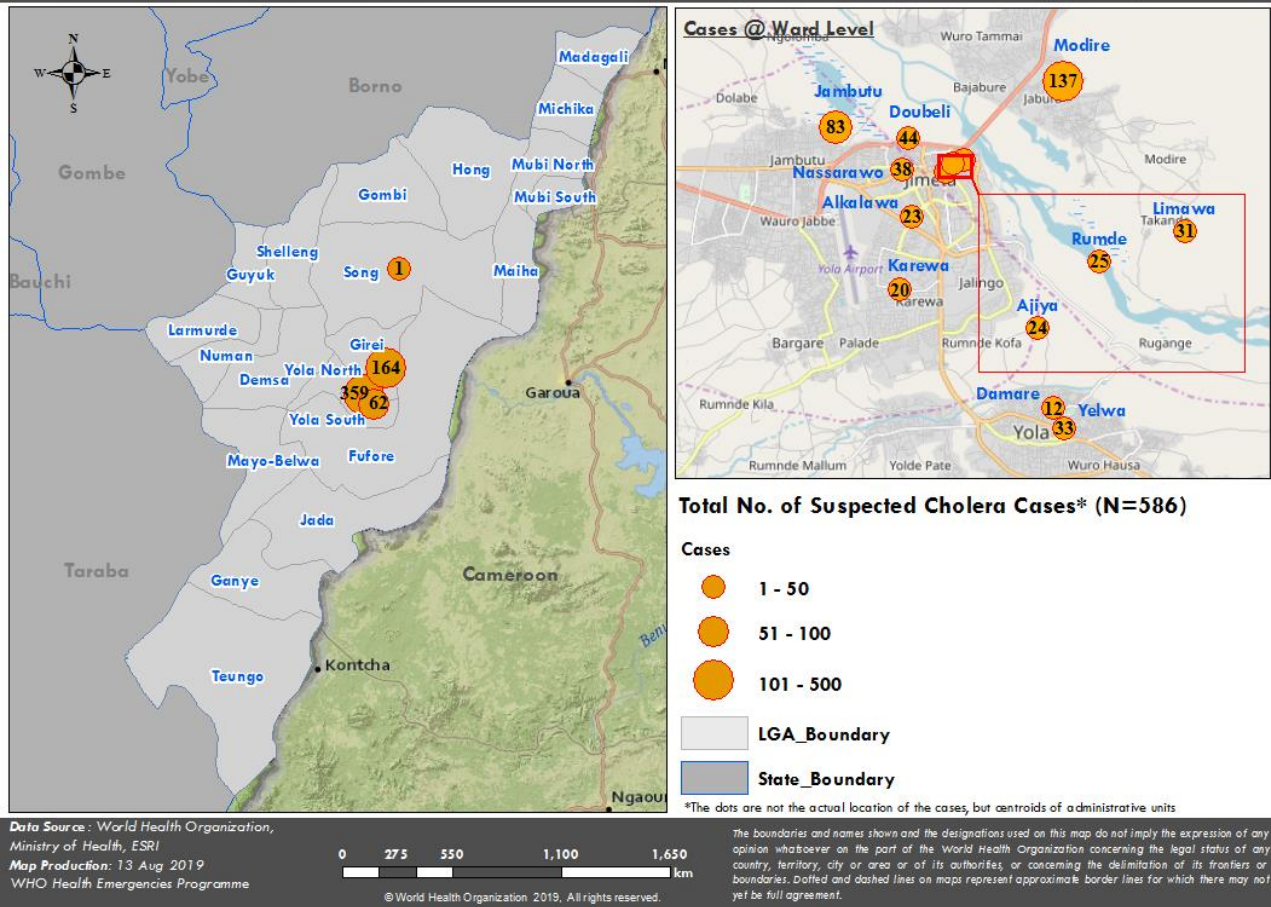


Figure 1: Map of Adamawa State showing cases of suspected Cholera in the affected Wards of the four Local Government Areas

Water points chlorination	Girei	Song	Yola North	Yola South
No of water points mapped	89	0	54	53
No of water points tested	16	0	16	16
No of water points being chlorinated	7	0	9	0
% of water points not being chlorinated	92%	0%	83%	100%

Table 2: Distribution of Water point chlorination in the affected LGAs in Adamawa State,2019.

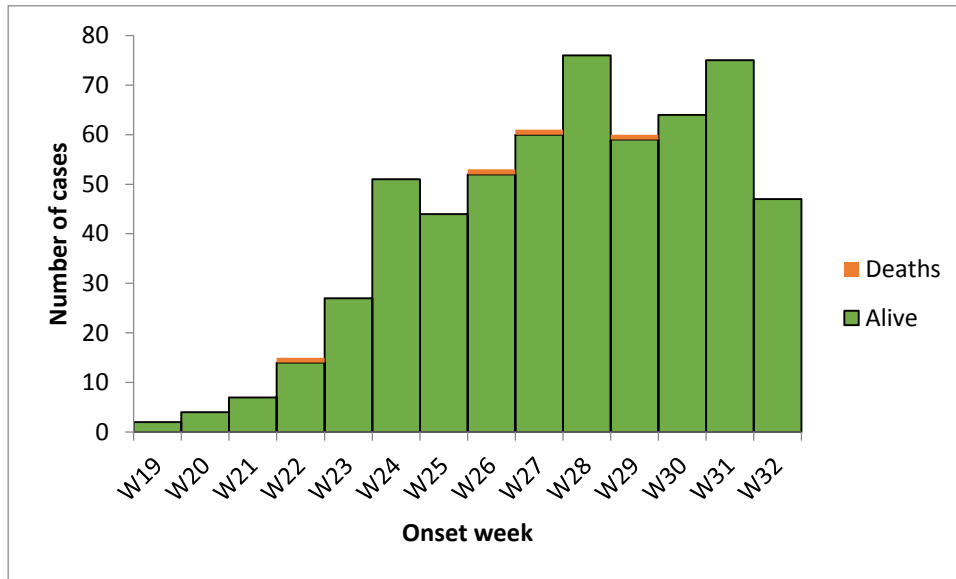


Figure 2: Weekly Epi-curve of suspected cholera cases in Adamawa State (Weeks 19-32)

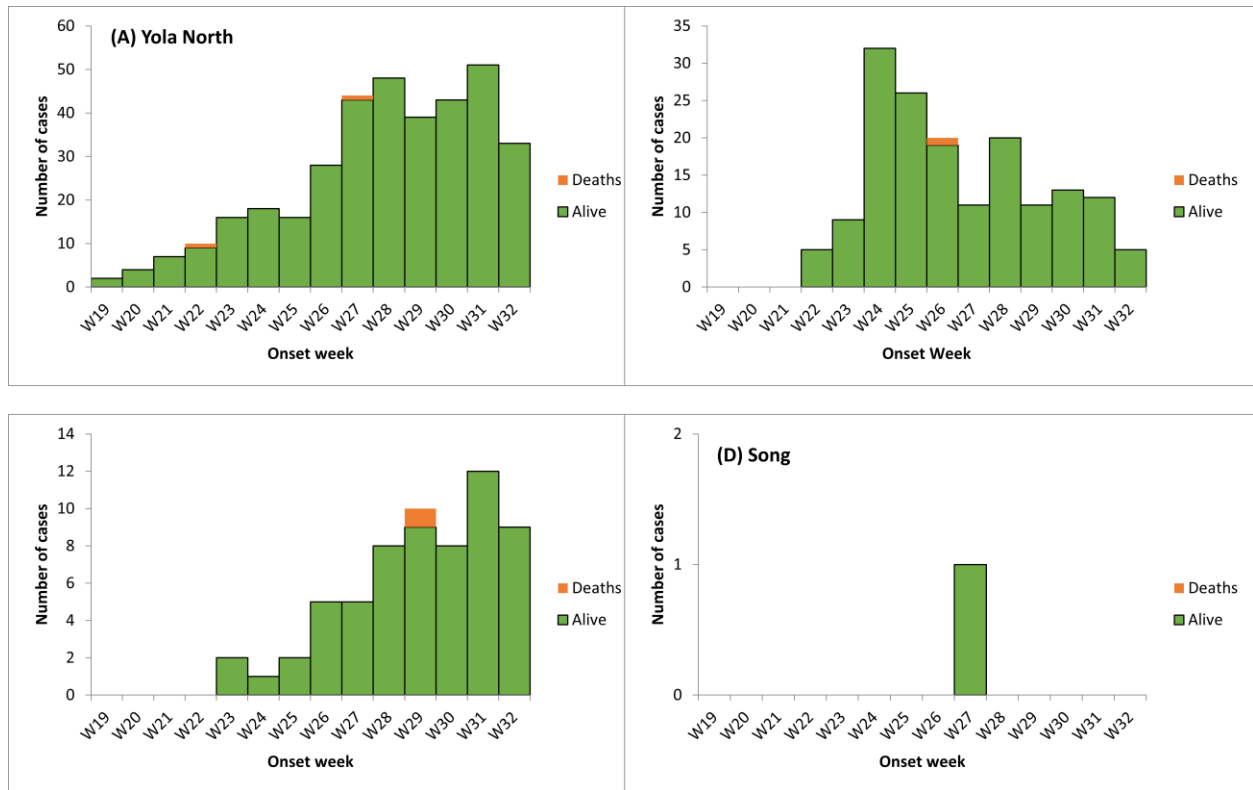


Figure 3: Weekly Epi-curve of suspected cholera cases in (A) Yola North, (B) Girei, (C) Yola South and (D) Song (weeks 19-32)

## Coordination:

- Two non-governmental organizations, Spring of hope and Destitute children in Health and Education initiative have joined the response to cholera in Adamawa State.
- Information has been passed that NRC will be joining the cholera response next week.

Pillars	Org	Activities	Place(s)
Surveillance	WHO	Supported ACS teams visited a total of 2102 households. A total of 3,5008 households have been visited since the commencement of the response.	Yola N, S, Girei
Case mgt	SMOH	15 new admissions, 7 discharges, no death	CTC
WASH	UNICEF	Chlorinated 20,815 liters of water in 8 water points, disinfected CTC admission rooms, 78 HHs and 249 HH latrines/dump sites. HP reached 477 HH and 3,172 people, distributed 2,433 pieces of Soap, 212 pieces of Jeri cans, and 57,240 Aqua tab tablets.	Yola North Girei
	IRC	Disinfected 107 public waste disposal sites, 304 HH latrines, CTC and Chlorinators sterilized 76,835 liters of water in 7 water points and also monitored FRC's at household level. HP reached 948 households and 8,400 persons. Also pasted 12 small banners	Yola North Girei, Yola South
	IOM	HP reached 355 households and 1,394 people and chlorinators sterilized 88,728 liters of water in 5 water points	Yola North
Logistics	WHO	WHO supplied cholera test kits, 50pcs of IV Given set , fuel for the Generator and the ambulance	CTC
	IRC	Supplied 20 potties, IEC materials, 10kg of 70% HTH chlorine powder	CTC
	JHF	10 bags of sachet water	CTC
Risk Comm.	UNICEF	Trained and engaged 70 religious leaders. Sensitized 8,894 HH and 16,142 people. UNICEF Hygiengiene promoters refereed 2 cases from Girei to CTC UNICEF supported radio jingles ongoing in Fombina FM	Girei, Yola south , Yola North , song
	WHO	38 community health champions visited 1,842 households and sensitized 4,036 people. Total number of household visited and persons sensitized since onset of intervention are 29, 130 and 56, 986 respectively	Yola North, South, Girei

Table 3 showing activities carried out in the thematic areas from 7<sup>th</sup> to 9<sup>th</sup> August, 2019.

## Challenges

- Private health facilities are reluctant to send patients to CTC.
- Poor sanitation is still observed in the communities
- WaSH intervention is yet to be scaled up in most affected communities

## Next steps

- Advocacy to private health practitioners
- Girei Health Educator mandated to ensure settlements bordering infected settlements continue to sensitize the communities on the risks of spread of cholera
- The need for more WaSH partner engagement to fill up the gaps

**Dr Pembi Emmanuel**  
State Epidemiologist  
(07068115161, 07010408293)

**Dr Jerry Pantuvo**  
WHO Surveillance Officer  
(08061203546, 08126371508)