



# Situation Report

## Adamawa State Ministry of Health



<b>TITLE</b>	2019 Cholera Outbreak Situation Report
<b>SERIAL NUMBER</b>	21
<b>EPID-WEEK</b>	31
<b>DATE</b>	2 <sup>nd</sup> August, 2019

### Highlights

- Forty-four (44) new cases reported from 31<sup>st</sup> July to 2<sup>nd</sup> August, 2019 from the 3 LGAs (Yola North, Yola South and Girei) bringing total case count to 501.
- No new death reported within the reporting period (CFR=0.79 %).
- No new ward affected. Total number of wards which reported at least one suspected case still stands at 17.
- Song LGA has not reported a new case in 3 weeks

### Epidemiological Summary

The total number of cases reported as at 2nd August, 2019 stands at 501, with 4 deaths (CFR=0.79 %), Yola North has 300 cases with 2 deaths (CFR= 0.67 %); Girei has 150 cases with 1 death (CFR= 0.67 %), Yola South has 50 cases with 1 death (CFR= 2.0 %) and Song has 1 case with 0 death (CFR= 0 %). So far, 149 samples yielded growth suggestive of *Vibrio cholerae* on culture and results of 7 isolates from the reference laboratory revealed 01 serotype.

	Yola North	Girei	Yola South	Song	Total
<b>Cases</b>					
New suspected Cholera cases	24	9	11	0	44
Cumulative suspected cholera cases	300	150	50	1	501
<b>Deaths</b>					
New deaths	0	0	0	0	0
Cumulative deaths	2	1	1	0	4
<b>Laboratory</b>					
Number of specimens collected	172	55	29	1	257
Number of specimen (RDT +ve)	99	40	15	1	155
Number of specimen (Culture +ve)	103	31	14	1	149
Number of specimen (01 serotype)	5	1	1	0	7

Table 1: Number of cases, deaths and samples tested for Cholera in Adamawa State, as at 2<sup>nd</sup> August, 2019.

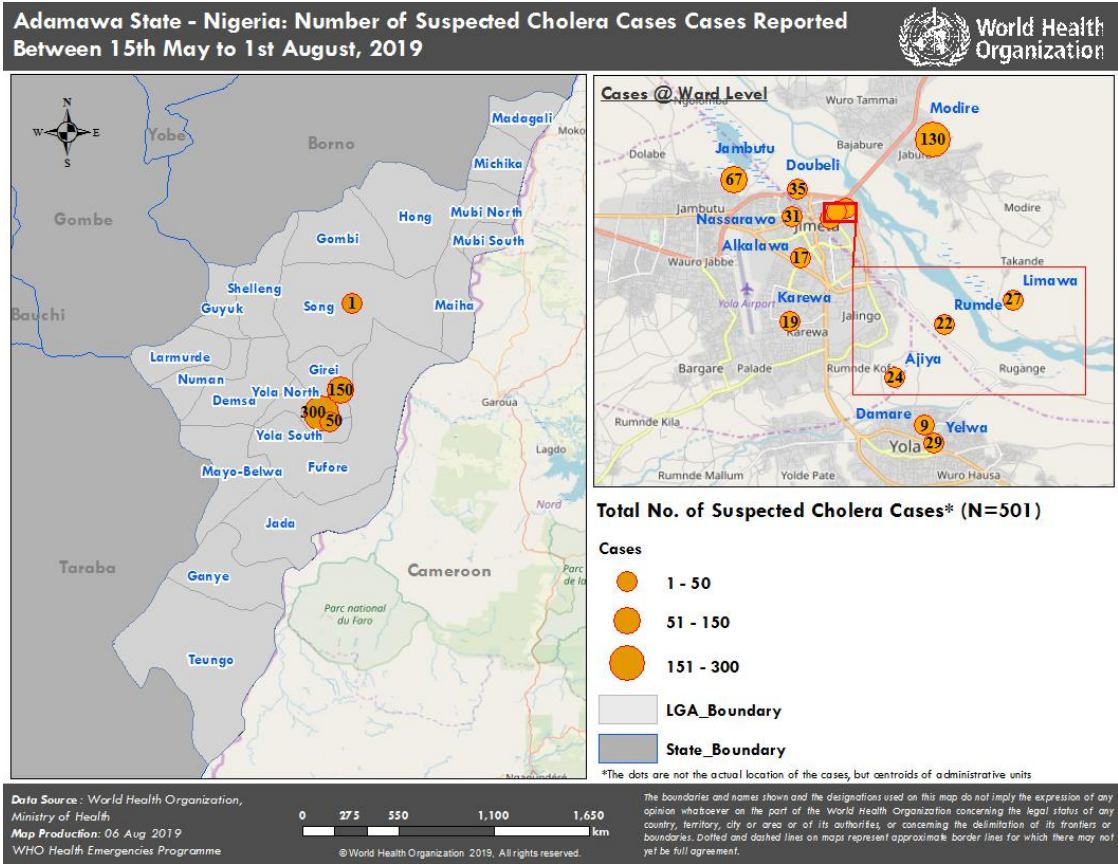


Figure 1: Map of Adamawa State showing cases of suspected Cholera in the affected Wards of the four Local Government Areas

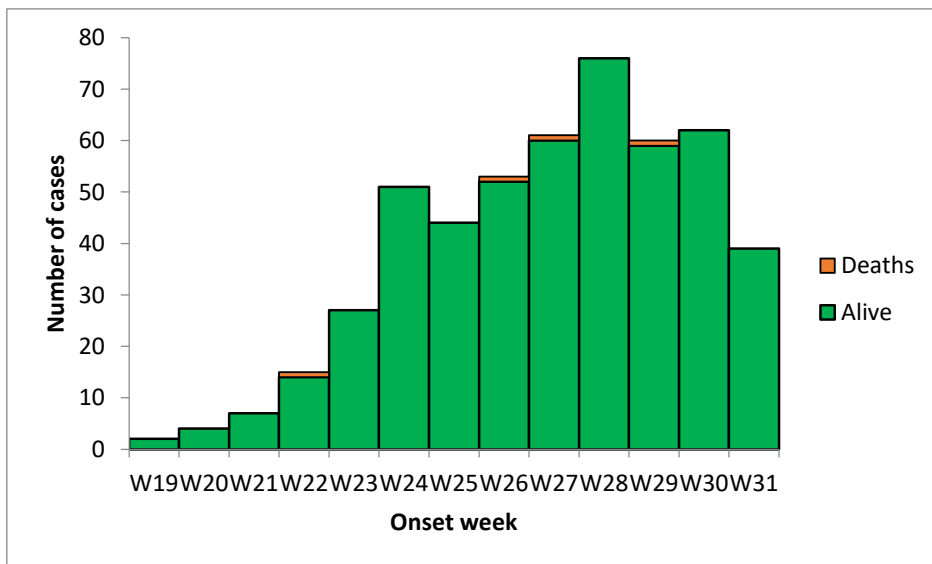


Figure 2: Weekly Epi-curve of suspected cholera cases in Adamawa State (Weeks 19-31)

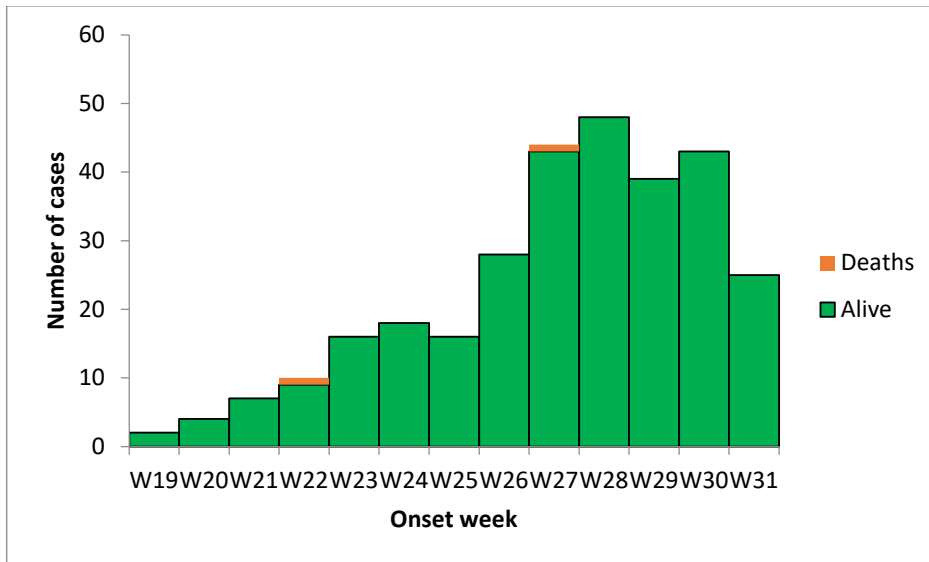


Figure 3: Weekly Epi-curve of suspected cholera cases in Yola North, Adamawa State (weeks 19-31)

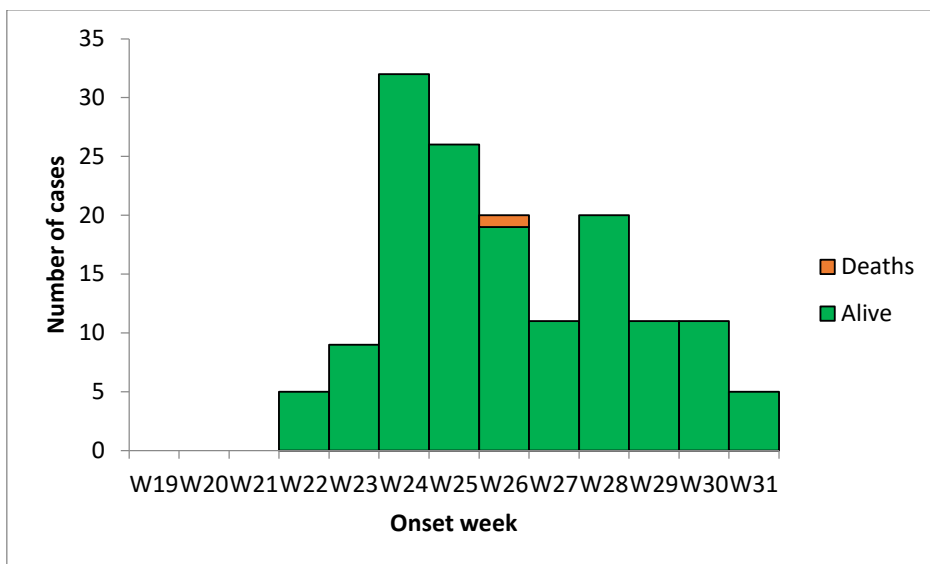


Figure 4: Weekly Epi-curve of suspected cholera cases in Girei, Adamawa State (weeks 19-31)

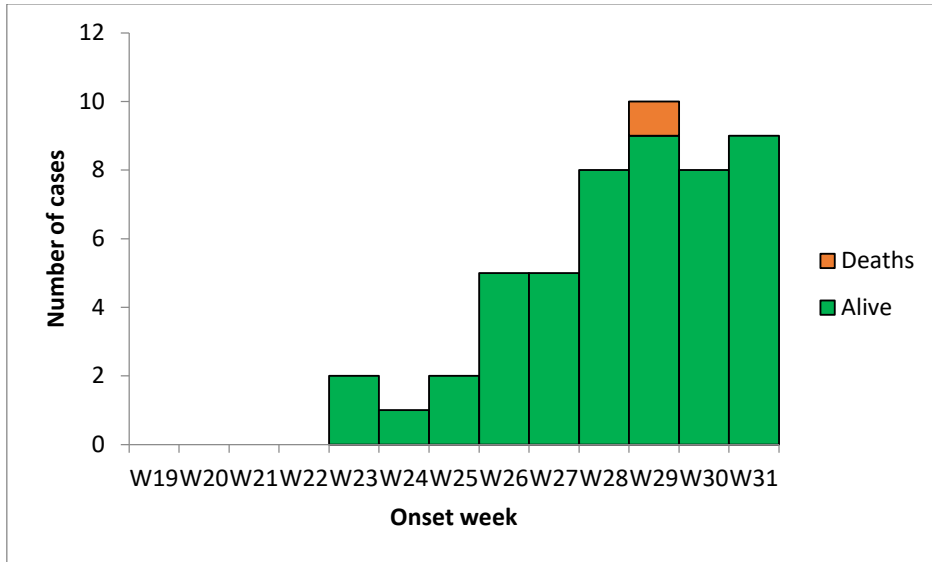


Figure 5: Weekly Epi-curve of suspected cholera cases in Yola South, Adamawa State (weeks 19-31)

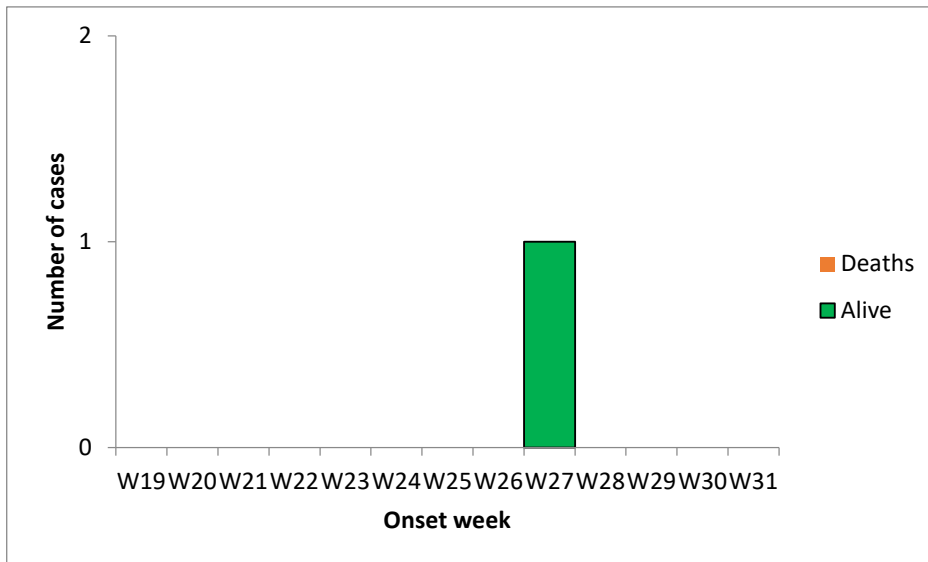


Figure 6: Weekly Epi-curve of suspected cholera case in Song, Adamawa State (weeks 19-31)

## Coordination

- SMOH emphasized the need to be strategic in the current outbreak response

## Case Management

- 16 admissions and 13 discharges at the CTC

## Surveillance

- Flooding occurred in Yola South LGA with increasing number of suspected cases being reported from affected areas.
- WHO supported ACS teams visited a total of 1,779 households A total of 29,948 households have been visited since the commencement of the response.

## WASH

- **UNICEF** supported house to house hygiene promoters reached 530 households and 3,309 people with Key Hygiene messages in Girei and Yola North LGAs.
- **UNICEF** distributed 1,763 pieces of Soap for personal hygiene, 127 pieces of 25 liters Jericans for safe household water storage, and 63,600 Aquatab tablets for household water treatment during house to house hygiene promotion.
- **UNICEF** chlorinated 25,427 liters of water in 8 water points at Girei and Yola North LGAs.
- **UNICEF** disinfected/sprayed 356 households and 503 household latrines/dump sites.
- **UNICEF** disinfected the CTC admission rooms and surrounding/environment.
- **UNICEF** supplied additional 60 cups to the CTC.
- **UNICEF** supplied 20 cartons of Aquatabs to the CTC.
- **IRC** supported house to house hygiene promoters reached 905 households and 7,518 persons with key hygiene messages and pasted 32 small banners with cholera prevention messages across Yola North and Yola South LGAs.
- **IRC** disinfected 14 public waste disposal sites and 167 household latrines.
- **IRC** chlorinated 79,625 liters of water in 6 water points and monitored FRC's at household level in Girei LGA.
- **IRC** Supplied additional IPC materials to the CTC
- **IRC** is Spraying the CTU twice daily.
- **IRC** Supplied 20 Potties to support IPC in the CTC and also supported Girei PHCC, Rumde PHCC, Yelwa PHCC and Jambutu PHCC with additional IPC materials (8 pairs of Gum boots, 8 Pieces of Foot Mats, 40 PKT of Latext Examination Gloves, 20 PKT of Face Mask, 8 Pieces of Nose Mask, 16kg of HTH chlorine Powder)
- **IOM** supported house to house hygiene promoters reached 345 households and 1,287 people with Key Hygiene messages in Yola North LGA.
- **IOM** chlorinated 55,295 liters of water in 4 water points of Yola North LGA.
- **IOM** supplied 20 boxes of hygiene kit/discharge kit

## Risk Communication

- WHO supported community health champions visited 2,951 household sensitized 4753 persons on cholera prevention and distributed 10,660 tablets of aquatabs. A total of 24,520 were visited and 49,458 persons were sensitized since the commencement of the response.

- UNICEF Hygiene Promoters sensitized 3, 449 persons in 630 households in Yola South; 2,485 persons in 1020 households in Song LGA; 5, 595 persons in 2580 households in Yola North; and 6,054 persons in 3976 households in Girei LGA between 31st July and 2nd August 2019.
- UNICEF facilitated a public awareness talk shows was hosted and aired on Pulaako FM and ABC Radio. Airing of jingles on Cholera also ongoing on FRCN Fombina FM and Pulaako FM.
- A Stakeholders meeting with 74 participants including LGA Chairman, Ward Councillors, Village Heads and WDC Chairmen in Yola North LGA to help address Chlorine Rejection, and secure support of stakeholders. Meeting was facilitated by WHO, UNICEF, IOM, ICRC, and IRC representatives.

### **Logistics:**

- Rescue Committee(IRC) brought additional discharge kits i.e.1 ORS (120pcs), 100pcs of 500mls water guards, 20pcs of 20 & 10 liters plastic jerry can, 20pcs of 20liters plastic bucket, 120pcs laundry soaps, 80 pcs of stainless cups, 5kg of 70% household chlorine powder, 20pcs potties with lid. IRC also follow up regularly with the store to know the stock level to avoid stock out.
- WHO supplied additional commodities (8 packs of cholera test kits, 500mls of hand wash)
- UNICEF supplied additional 60 plastic cup
- Janna Health foundation produced 30 visitor's tags for patient relatives at the CTC
- Janna Health Foundation supplied 12 pieces (cans) of insecticides to the CTC
- Janna Health foundation supplied additional 7 bags of sachet water

**Dr Pembi Emmanuel**  
State Epidemiologist  
(07068115161, 07010408293)

**Dr Jerry Pantuvo**  
WHO Surveillance Officer  
(08061203546, 08126371508)