

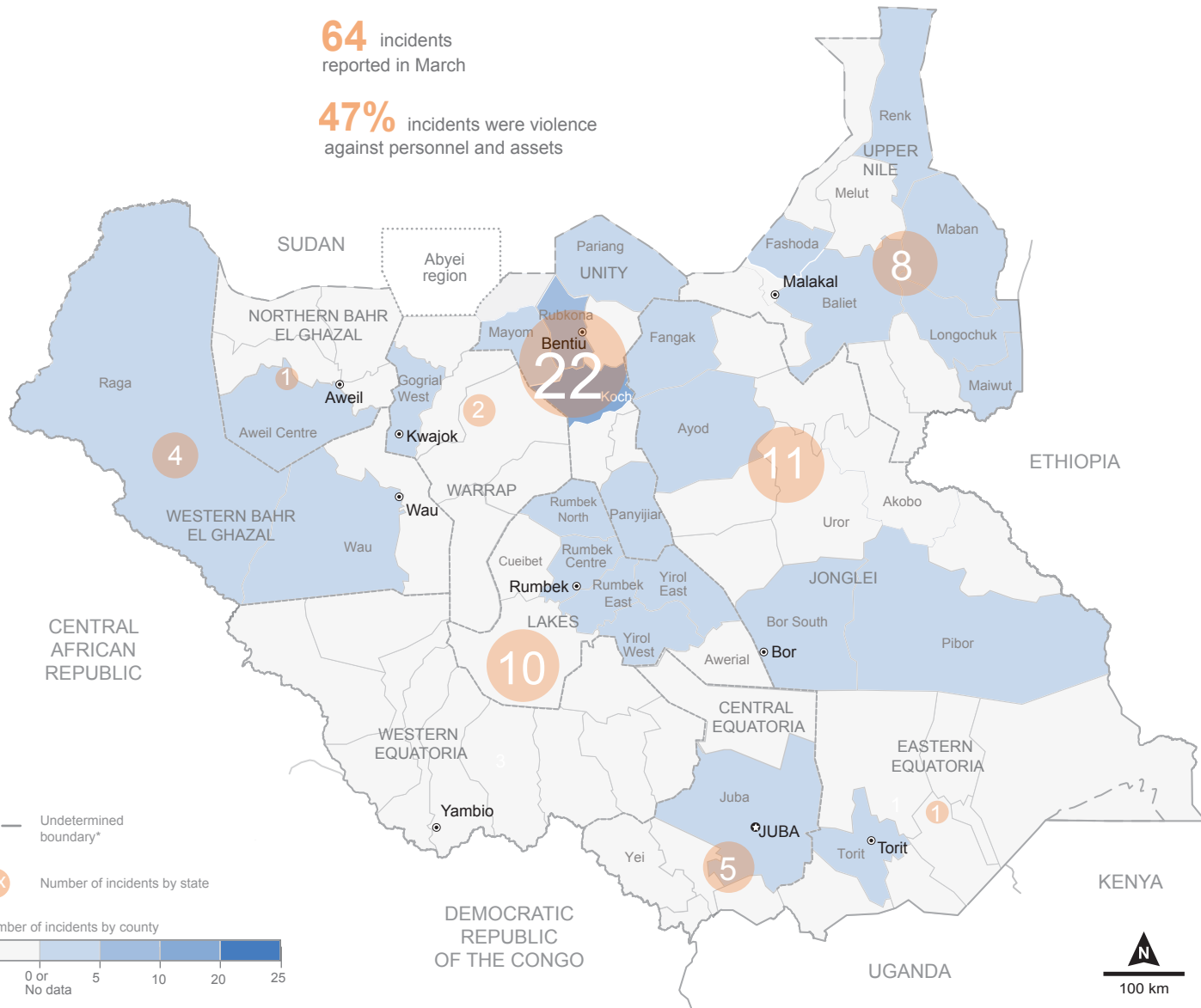


South Sudan: Humanitarian Access situation snapshot - March 2015

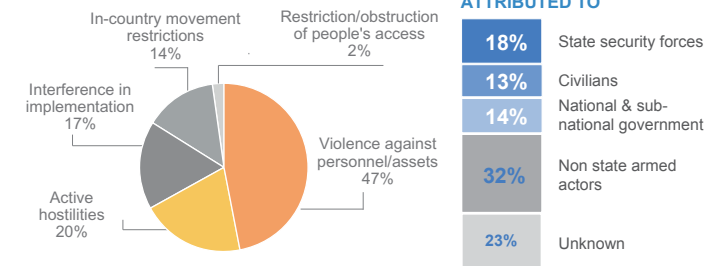
Humanitarian activities in South Sudan continued to support conflict affected communities in hard to reach areas. However, humanitarian access continued to be hampered by violence against aid workers and assets, interference in implementation, and active hostilities by all parties to the conflict throughout the month of March. Despite these constraints, access remains relatively consistent. Most incidents occurred in Unity, Lakes and Jonglei states.

64 incidents reported in March

47% incidents were violence against personnel and assets

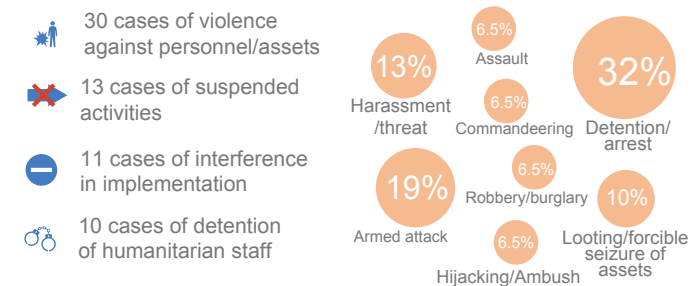


ACCESS CONSTRAINTS



IMPACT ON HUMANITARIAN RESPONSE

64 incidents were reported in March, a slight increase from February, making the average number of monthly reported incidents 56 over the last six months. Violence against personnel/assets, with detention, harassment/threats and robberies remained the most common type of incident reported. Interference in implementation at the national and local levels continued to disrupt and delay aid activities and agencies' ability to reach affected people. Active hostilities in Unity State, and insecurity in large parts of Lakes State, resulted to suspended activities.



ACTIONS TAKEN

The Humanitarian Country Team	- extensively engaged with all parties to the conflict to inform of the impact of access constraints on humanitarian programmes
OCHA's access team	- engaged with all parties to the conflict to overcome constraints and facilitate access in the most difficult to reach areas