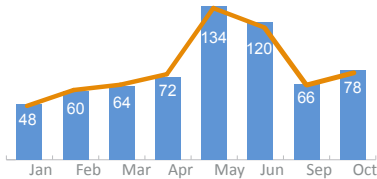




South Sudan: Humanitarian access situation snapshot - October 2015

In the month of October, humanitarian access was mainly hampered by violence against humanitarian personnel/assets and active hostilities and insecurity. The majority of incidents occurred in Central Equatoria, Unity and Western Equatoria states.

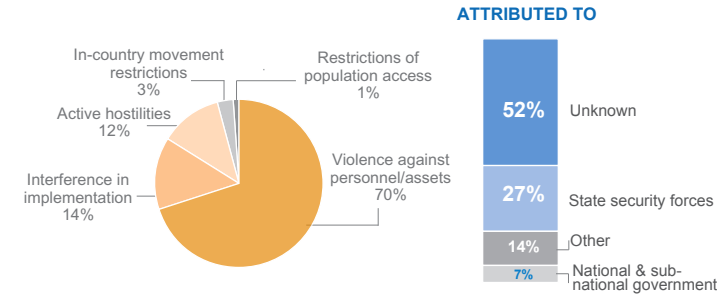
Reported access incidents* (January - October 2015)



78 incidents reported in October 2015

70% incidents involved violence against personnel and assets

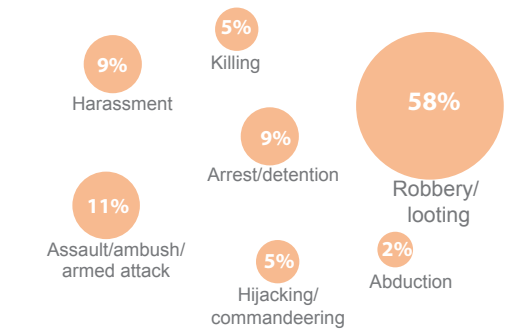
ACCESS CONSTRAINTS



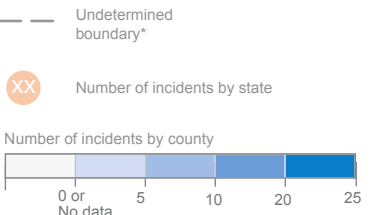
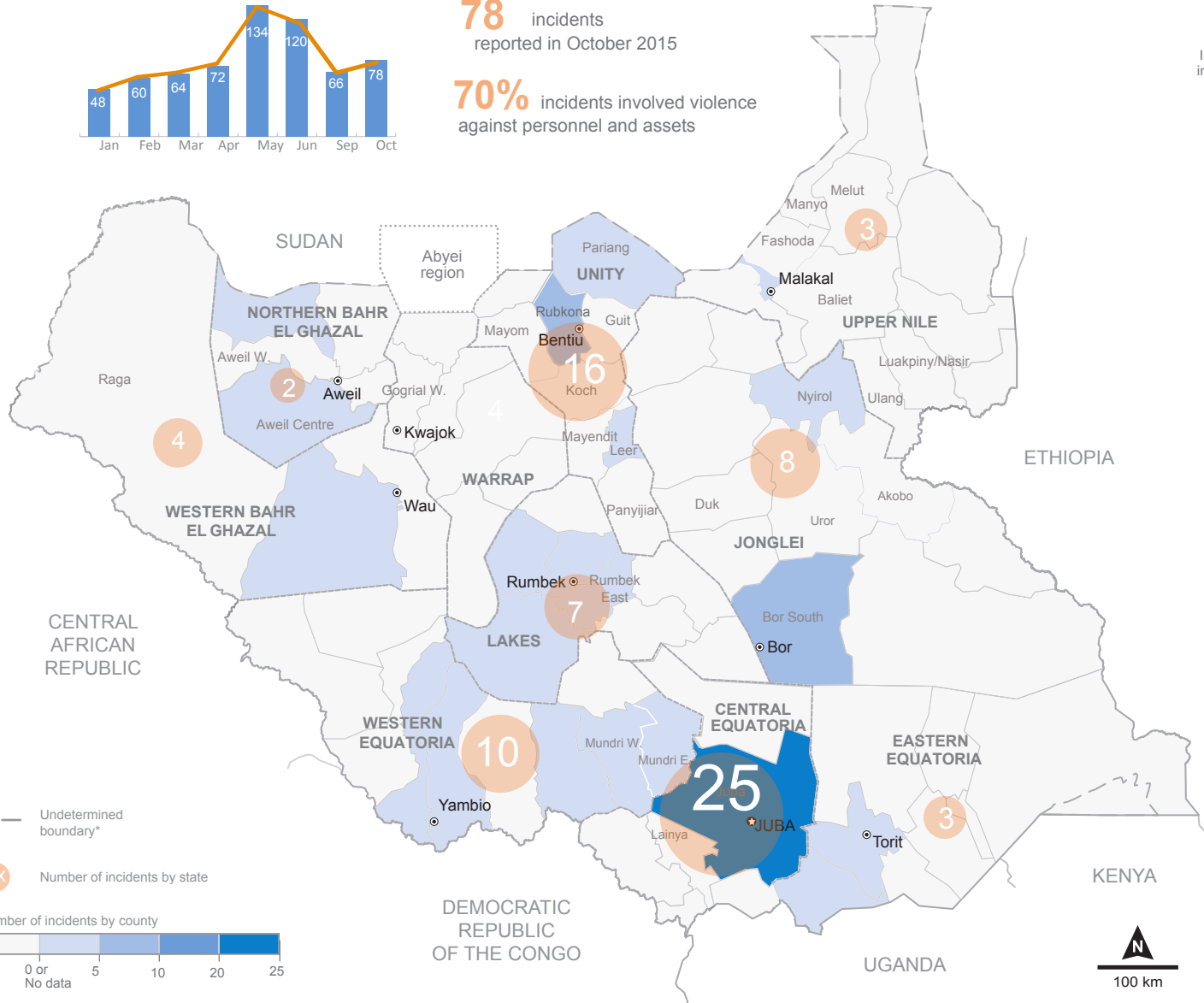
IMPACT ON HUMANITARIAN RESPONSE

A total of 78 access incidents were reported in October compared to 66 in September. Out of the total reported, 55 were incidents of violence against humanitarian personnel and assets, which remains the most frequently reported constraint. Over half of these were attempted or completed robberies/burglaries, including 15 in Juba. Country-wide, six cases of assault or armed attack against humanitarians were reported, in addition to five cases of arrest/detention. Insecurity in Western Equatoria and Lakes continued to hamper humanitarian access and active hostilities in central Unity led to the withdrawal of humanitarian actors and the disruption of humanitarian services. Three humanitarian workers were killed in Unity state during October.

Violence against personnel and assets



- 3 humanitarian staff killed
- 6 cases of assault/ambush/armed attack
- 32 attempted/completed robbery/burglary/looting
- 5 cases of arrest/detention
- 11 reports of withdrawal and/or suspension of activities



* A dedicated access survey on Unity and Upper Nile was sent to all partners in May, which prompted an increase in incidents reported in May and June.