


www.ifrc.org
Saving lives,
changing minds.

Emergency appeal Sierra Leone: Ebola virus disease

 International Federation
of Red Cross and Red Crescent Societies

Revised Emergency Appeal
n° :MDRSL005

6.3 million people to be assisted

CHF 227,366 DREF allocated

Appeal timeframe: 8 months

CHF 1,366,156 budget

Glide n°: [EP-2014-000039-SLE](#)

End date: December 2014

Launched: 18 July 2014

This revised Emergency Appeal for a total of CHF 1,366,156 (increased from CHF 880,000) enables the IFRC to support the **Sierra Leone Red Cross Society (SLRCS)** to deliver assistance and support to some **6.3m people**, with a focus on information and communication, education, awareness raising, and social mobilization, surveillance, case identification and contact management, case management (including management of dead bodies), psychosocial support, and regional preparedness and response. With the Emergency Response Unit (ERU) valued at some CHF 264,400, the total amount sought amounts to CHF 1.3m. The revised plan reflects an increase in activities (including dead body management) and geographic scope. The response reflects the current situation and information available at this point of the evolving operation, and will be adjusted based on further developments and more detailed assessments.

Details are available in the Emergency Plan of Action (EPoA) [<click here>](#)

The disaster

- March: Ebola outbreak detected in Guinea
- April: Sierra Leone established National Ebola Task Force. IFRC makes 1st DREF allocation of CHF 113,217 for preparedness
- 26 May: First ebola case reported in Sierra Leone near the border with Guinea, followed by 7 further cases detected. The spread is largely the result of the movement of health care workers while caring for the first cases
- June: IFRC Field Assessment and Coordination team (FACT) deployed (rapid assessment); IFRC makes 2nd DREF allocation of CHF 114,119
- 26 June: IFRC launches Emergency Appeal for CHF 880,000
- June: 83 confirmed cases, 193 suspected cases, 20 deaths
- 11 July: 337 confirmed cases, 142 deaths
- 17 July: IFRC issues revised appeal for CHF 1,366,156



| | | | | | | | | | | |
|--|-------|---|---|---|---|---|---|---|---|---|
| Manager, Emergency Health Delegate and Hygiene Promotion/Sanitation Delegate | | | | | | | | | | |
| Provide surge capacity through the deployment of a Basic Health Care and IT and Telecommunications Emergency Response Unit | | | | | | | | | | |
| Conduct rapid and ongoing assessments in, Bo, Kailahun, Kenema, the Western Regions (Freetown) and other districts as dictated by the evolution of the outbreak and incorporate findings into plan of action | | | | | | | | | | |
| One NS focal point will be assigned to each district to ensure supervision at field level | | | | | | | | | | |
| Mobilise surge vehicles and maintain operational capacity at field level | | | | | | | | | | |
| Output 1.2 Increased public awareness about EVD (signs and symptoms, transmission risk factors, actions for suspected cases and anti-stigma information) | | | | | | | | | | |
| Activities planned | Month | 1 | 2 | 3 | 4 | 5 | 6 | 7 | 8 | 9 |
| Develop communication strategy for targeted awareness | | | | | | | | | | |
| Train 390 volunteers nationally in disease signs, symptoms, prevention and referral mechanisms | | | | | | | | | | |
| Refresh volunteers on community-based awareness-raising and social mobilization techniques | | | | | | | | | | |
| Produce and disseminate context-specific Information, Education and Communication materials | | | | | | | | | | |
| Procure visibility equipment and personal protective equipment and distribute to branches | | | | | | | | | | |
| Conduct health promotion campaigns using house-to-house, community sensitization and media campaign in targeted counties | | | | | | | | | | |
| Continuous monitoring and evaluation | | | | | | | | | | |
| Output 1.3 Epidemiological investigation and epidemic control measures carried out (contact tracing & DBM) | | | | | | | | | | |
| Activities planned | Month | 1 | 2 | 3 | 4 | 5 | 6 | 7 | 8 | 9 |
| Provide surge vehicles for teams involved in activities related to dead body management | | | | | | | | | | |
| Train 350 volunteers in up to 7 districts for daily monitoring and tracing of contacts of confirmed cases | | | | | | | | | | |
| Establish coordination and clear referral mechanism with county health teams | | | | | | | | | | |
| Train 350 volunteers in up to 7 in the use of basic personal protective equipment for contact tracing | | | | | | | | | | |
| Train volunteers in Dead Body Management (transport of body, burials and disinfection) | | | | | | | | | | |
| Procure materials and equipment to carry out DBM (body bags, PPE, chlorine, gloves, goggles, rubber boots) | | | | | | | | | | |
| Organise cross-border workshop on dead body management | | | | | | | | | | |
| Output 1.4 Psychosocial support provided to the target population | | | | | | | | | | |
| Activities planned | Month | 1 | 2 | 3 | 4 | 5 | 6 | 7 | 8 | 9 |
| Train 350 volunteers in up to 7 districts who are following up contact in psychosocial first aid | | | | | | | | | | |
| Provide psychosocial counselling to affected persons, family members, and volunteers | | | | | | | | | | |
| Conduct community visits for mitigation and reduction of stigma and fear | | | | | | | | | | |
| Prepare communities for re-integration / acceptance of suspects / probable / confirmed cases | | | | | | | | | | |
| Accompany and support individuals discharged from isolation back to their communities to assist in re-entry and re assure community | | | | | | | | | | |
| Establish volunteer care mechanisms and systems | | | | | | | | | | |
| Output 1.5 Provide support to individuals or families who have lost belongings due to disinfection and epidemic control measures | | | | | | | | | | |
| Activities planned | Month | 1 | 2 | 3 | 4 | 5 | 6 | 7 | 8 | 9 |
| Procurement and distribution of appropriate resettlement packages | | | | | | | | | | |
| Output 1.6 Risks to volunteers are minimised | | | | | | | | | | |
| Activities planned | Month | 1 | 2 | 3 | 4 | 5 | 6 | 7 | 8 | 9 |

| | | | | | | | | | | |
|--|--|--|--|--|--|--|--|--|--|--|
| Procure protective raingear, footwear and sanitizer for volunteers | | | | | | | | | | |
| Insure up to 1050 volunteers (complementary Insurance to IFRC's global accident insurance) | | | | | | | | | | |

| Outcome 2 Regional Ebola preparedness measures and coordination mechanisms are in place | | | | | | | | | | |
|--|-------|---|---|---|---|---|---|---|---|---|
| Output 2.1 Sierra Leone and bordering National Societies are prepared and respond in a coordinated manner | | | | | | | | | | |
| Activities planned | Month | 1 | 2 | 3 | 4 | 5 | 6 | 7 | 8 | 9 |
| Organise field level regional workshop on learning | | | | | | | | | | |
| Organise regional headquarter level workshop on learning | | | | | | | | | | |
| Deploy IFRC Ebola Response Coordinator | | | | | | | | | | |
| Develop IFRC guideline management of an EVD epidemic that crosses borders | | | | | | | | | | |

| Outcome 3 The management of the operation is informed by a comprehensive monitoring and evaluation system | | | | | | | | | | |
|--|-------|---|---|---|---|---|---|---|---|---|
| Output 3.1 A process of monitoring and evaluation maintained and reported on throughout the program | | | | | | | | | | |
| Activities planned | Month | 1 | 2 | 3 | 4 | 5 | 6 | 7 | 8 | 9 |
| Establish regular monitoring system to map cases and National Society field capacity | | | | | | | | | | |

Coordination and Partnerships

The Sierra Leone Red Cross Society is a member the National Ebola Taskforce with the Ministry of Health, World Health Organization and NGO partners including Médecins Sans Frontières, Save the Children and Action Contre la Faim. It is also a member of the taskforces established at a district level and daily coordination meetings take place in Kailahun under joint MoHS/WHO leadership. Under the national taskforce are five pillars: laboratories and surveillance; case management, social mobilization, logistics and coordination. The same technical coordination structures have been established in Kailahun and each of these groups meet twice a week. Updates on the epidemiological situation are provided at the taskforce meetings and are also published on the Ministry of Health and Sanitation's Facebook page and the WHO Global Alert and Response website.

Budget

See attached IFRC Secretariat budget (Annex 1) for details. The budget reflects the high human-resource intensive nature of this operation.

Walter Cotte
Under Secretary General
Programme Services Division

Bekele Geleta
Secretary General

Reference documents



Click here for:

- [Appeal Budget](#)
- [Emergency Plan of Action \(EPoA\)](#)

Contact Information

For further information specifically related to this operation please contact:

- **Sierra Leone:** Emmanuel Tommy, Secretary General, +233 766 266 74; email: etommy@sierraleoneredcross.org
- **IFRC Sierra Leone:** JP Tashereau, Head of Emergency Operations (HEOPs) on deployment ebola operation, Mobile 1 (Sierra Leone): + 232 79 34 60 70, Mobile 2 (Roaming): +41 79 708 4821, email : jp.taschereau@ifrc.org
- **IFRC Regional Representation:** Daniel Sayi, Regional Representative, West Coast, Abidjan, Côte d'Ivoire office phone; +225 66 775 261; email: daniel.sayi@ifrc.org
- **IFRC Africa Zone:** Daniel Bolaños, Disaster Management Coordinator for Africa; Nairobi; phone: +254 731 067 489; email: daniel.bolanos@ifrc.org
- **IFRC Geneva:** Cristina Estrada South, Operations Quality Assurance Senior Officer; Geneva; phone: +41 22 730 4260; email: cristina.estrada@ifrc.org

For Resource Mobilization and Pledges:

- **IFRC Africa Zone:** Martine Zoethoutmaar, Resource Mobilization Coordinator for Africa; Addis Ababa; phone: +251 93 003 4013; email martinezoethoutmaar@ifrc.org

For Performance and Accountability (planning, monitoring, evaluation and reporting):

- **IFRC Zone:** Robert Ondrusek, PMER Coordinator; phone: +254 731 067 277; email: Robert.ondrusek@ifrc.org

How we work

All IFRC assistance seeks to adhere to the **Code of Conduct** for the International Red Cross and Red Crescent Movement and Non-Governmental Organizations (NGO's) in Disaster Relief and the **Humanitarian Charter and Minimum Standards in Humanitarian Response (Sphere)** in delivering assistance to the most vulnerable. The IFRC's vision is to inspire, encourage, facilitate and promote at all times all forms of humanitarian activities by National Societies, with a view to **preventing and alleviating human suffering**, and thereby contributing to the maintenance and promotion of human dignity and peace in the world.

The IFRC's work is guided by Strategy 2020 which puts forward three strategic aims:



Save lives.
protect livelihoods,
and strengthen recovery
from disaster and crises.



Enable **healthy**
and **safe** living.



Promote social inclusion
and a culture of
non-violence and **peace**.

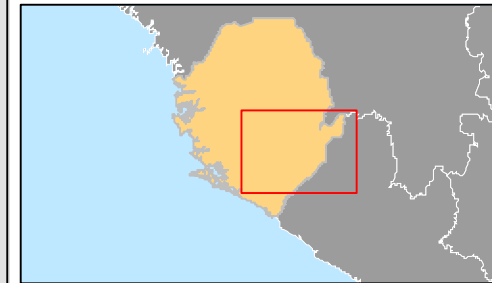
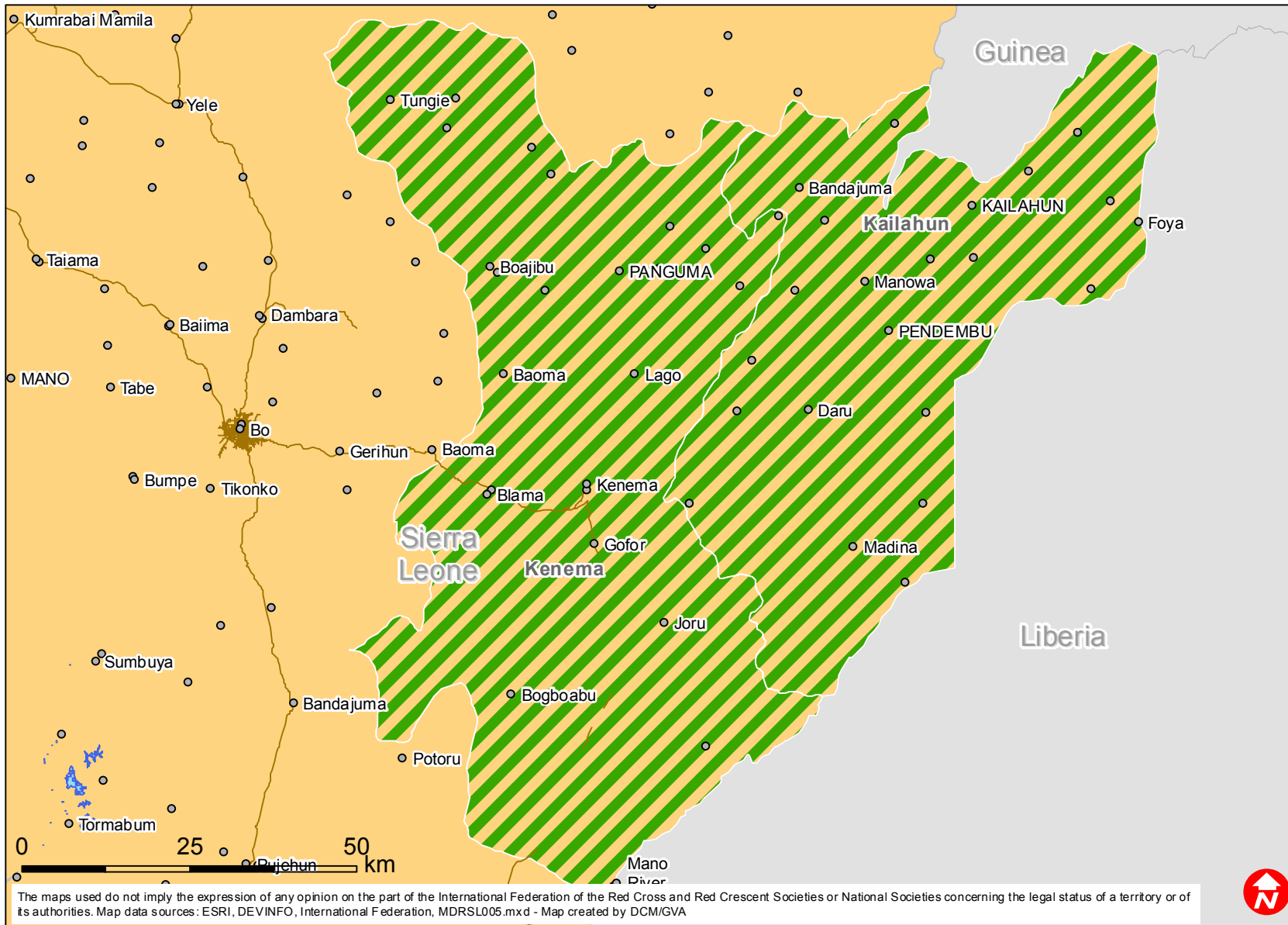
Sierra Leone: Ebola Virus Disease Revised Emergency Appeal

18.07.2014

| Budget Group | Multilateral Response | Inter-Agency Shelter Coord. | Bilateral Response | Appeal Budget CHF | Expenditure CHF |
|--|-----------------------|-----------------------------|--------------------|-------------------|-----------------|
| Shelter - Relief | 200 | | | 200 | 0 |
| Shelter - Transitional | 0 | | | 0 | 0 |
| Construction - Housing | 0 | | | 0 | 0 |
| Construction - Facilities | 0 | | | 0 | 0 |
| Construction - Materials | 0 | | | 0 | 0 |
| Clothing & Textiles | 0 | | | 0 | 0 |
| Food | 0 | | | 0 | 0 |
| Seeds & Plants | 0 | | | 0 | 0 |
| Water, Sanitation & Hygiene | 8,297 | | | 8,297 | 0 |
| Medical & First Aid | 25,870 | | | 25,870 | 0 |
| Teaching Materials | 45,267 | | | 45,267 | 0 |
| Utensils & Tools | 45,000 | | | 45,000 | 0 |
| Other Supplies & Services | 37,750 | | | 37,750 | 0 |
| Emergency Response Units | 0 | | 264,400 | 0 | 0 |
| Cash Disbursements | 0 | | | 0 | 0 |
| Total RELIEF ITEMS, CONSTRUCTION AND SUPPLIES | 162,384 | 0 | 264,400 | 162,384 | 0 |
| Land & Buildings | 0 | | | 0 | 0 |
| Vehicles Purchase | 0 | | | 0 | 0 |
| Computer & Telecom Equipment | 28,564 | | | 28,564 | 0 |
| Office/Household Furniture & Equipment | 778 | | | 778 | 0 |
| Medical Equipment | 0 | | | 0 | 0 |
| Other Machinery & Equipment | 0 | | | 0 | 0 |
| Total LAND, VEHICLES AND EQUIPMENT | 29,342 | 0 | 0 | 29,342 | 0 |
| Storage, Warehousing | 0 | | | 0 | 0 |
| Distribution & Monitoring | 12,000 | | | 12,000 | 0 |
| Transport & Vehicle Costs | 235,768 | | | 235,768 | 0 |
| Logistics Services | 0 | | | 0 | 0 |
| Total LOGISTICS, TRANSPORT AND STORAGE | 247,768 | 0 | 0 | 247,768 | 0 |
| International Staff | 390,000 | | | 390,000 | 0 |
| National Staff | 0 | | | 0 | 0 |
| National Society Staff | 71,085 | | | 71,085 | 0 |
| Volunteers | 167,510 | | | 167,510 | 0 |
| Total PERSONNEL | 628,595 | 0 | 0 | 628,595 | 0 |
| Consultants | 0 | | | 0 | 0 |
| Professional Fees | 0 | | | 0 | 0 |
| Total CONSULTANTS & PROFESSIONAL FEES | 0 | 0 | 0 | 0 | 0 |
| Workshops & Training | 85,274 | | | 85,274 | 0 |
| Total WORKSHOP & TRAINING | 85,274 | 0 | 0 | 85,274 | 0 |
| Travel | 32,000 | | | 32,000 | 0 |
| Information & Public Relations | 46,573 | | | 46,573 | 0 |
| Office Costs | 12,000 | | | 12,000 | 0 |
| Communications | 28,840 | | | 28,840 | 0 |
| Financial Charges | 10,000 | | | 10,000 | 0 |
| Other General Expenses | 0 | | | 0 | 0 |
| Shared Support Services | | | | | |
| Total GENERAL EXPENDITURES | 129,413 | 0 | 0 | 129,413 | 0 |
| Programme and Supplementary Services Recovery | 83,380 | 0 | 0 | 83,380 | 0 |
| Total INDIRECT COSTS | 83,380 | 0 | 0 | 83,380 | 0 |
| TOTAL BUDGET | 1,366,156 | 0 | 264,400 | 1,366,156 | 0 |
| Available Resources | | | | | |
| Multilateral Contributions | | | | 0 | |
| Bilateral Contributions | | | | 0 | |
| TOTAL AVAILABLE RESOURCES | 0 | 0 | 0 | 0 | |
| NET EMERGENCY APPEAL NEEDS | 1,366,156 | 0 | 264,400 | 1,366,156 | 0 |



Sierra Leone: Ebola



 Targetted states

