



The Central African Republic (CAR) has descended into chaos and deadly violence following months of political crisis, lawlessness and increasing humanitarian needs. UN agencies estimate that 2 million people, almost half of the population, are in need of assistance.

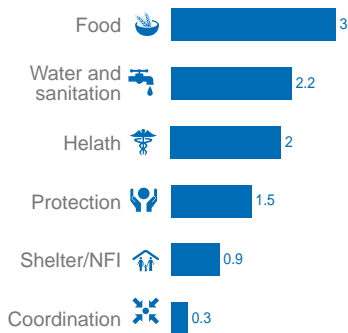
On 9 December, three days before a System-Wide Level 3 Emergency was declared, the Emergency Relief Coordinator approved a US\$9.8 million CERF allocation to support relief efforts in CAR. The funds will support critical assistance including the provision of food, clean water, shelter, healthcare and safety and security services.

In May 2013, CERF allocated \$7.1 million to CAR to assist people affected by renewed conflict. An additional \$8 million was provided to neighboring Democratic Republic of the Congo, where more than 50,000 refugees from CAR had arrived. In Chad, relief agencies received an additional \$2.4 million from CERF to support refugees from CAR and Sudan.

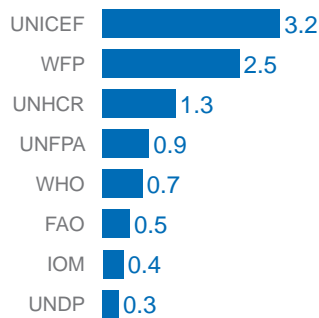
DECEMBER 2013 ALLOCATION

\$9.8 million

BY SECTOR (in million US\$)

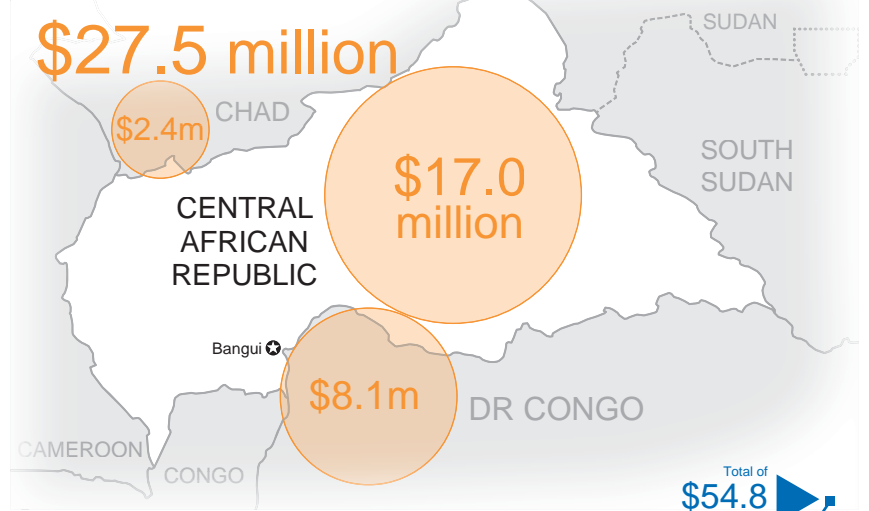


BY AGENCY (in million US\$)



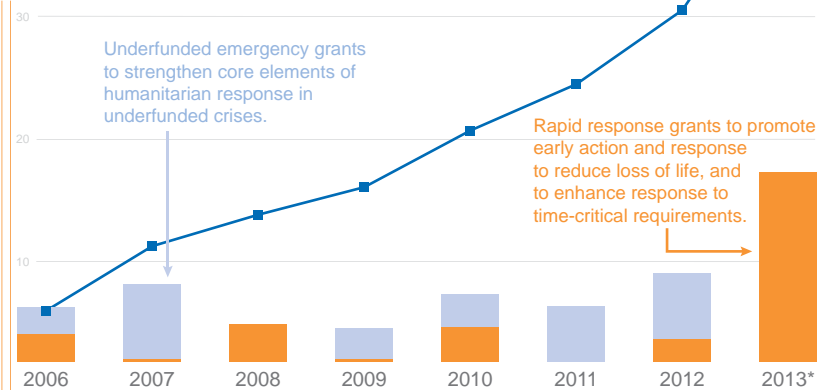
CERF REGIONAL RESPONSE 2013/2014

\$27.5 million

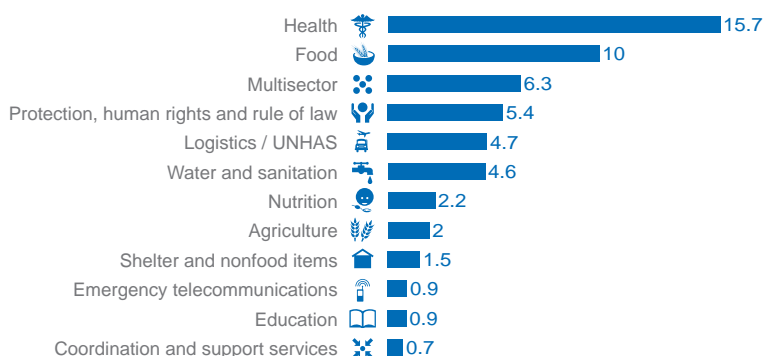


CERF ALLOCATIONS TO CAR (since 2006)

\$54.8 million



BY SECTOR (in million US\$)



BY AGENCY (in million US\$)

