

### Affected Population:

29

Individuals

6

Households



9 displaced



1 injured



1 dead



0 missing



### Incidents: 7



0 Slope Failure: 0 HH



1 Wind/Storm: 2 HH



0 Flood: 0 HH



4 Fire: 4 HH



0 Lightning: 0 HH



2 Traffic Accident: 0 HH



0 Drowning: 0 HH



0 Infrastructure Hazard: 0 HH

### Damaged Facilities/Shelters:

2

Shelters  
(Fully)

4

Shelters  
(Partially)

0

Health  
Facilities

0

Water  
Points

0

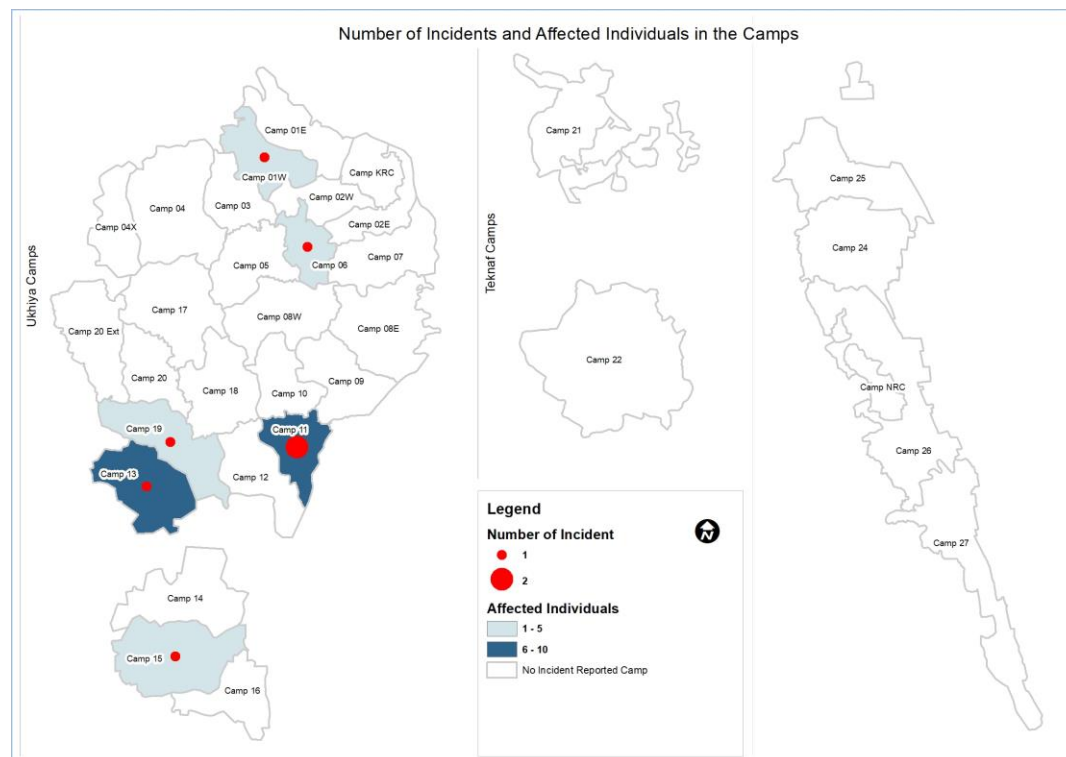
Latrines

0

Food  
Distribution site

Between **20 March – 26 March 2022**, a total of 7 incidents were recorded which affected 29 individuals (6 households). Out of them, 1 died and 1 was injured.

- Fire affected the highest number of households (4).
- In total, 4 shelters were partially damaged.
- The highest number of affected individuals was recorded in Camp-11.
- A total of 7 incidents was managed with resources available, for 0 incident, sectoral/emergency response needed.
- In total 2 Immediate shelter NFI distribution and 1 health responses were provided.
- There was 22% decrease in the number of incidents and 41% decrease in the number of individuals affected since the last update.



### Affected Population:

4,531

Individuals

972

Households



2,360 displaced



33 injured



4 dead



0 missing



### Incidents: 94



2 Slope Failure: 2 HH



4 Wind/Storm: 19 HH



0 Flood: 0 HH



74 Fire: 951 HH



0 Lightning: 0 HH



12 Traffic Accident: 0 HH



2 Drowning: 0 HH

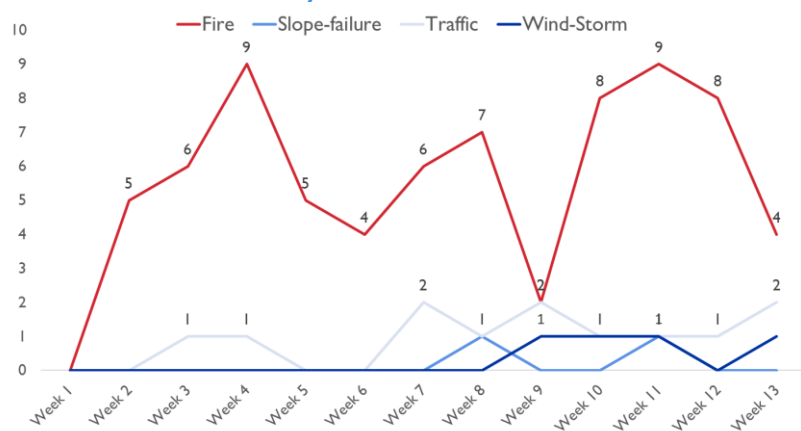


0 Infrastructure Hazard: 0 HH

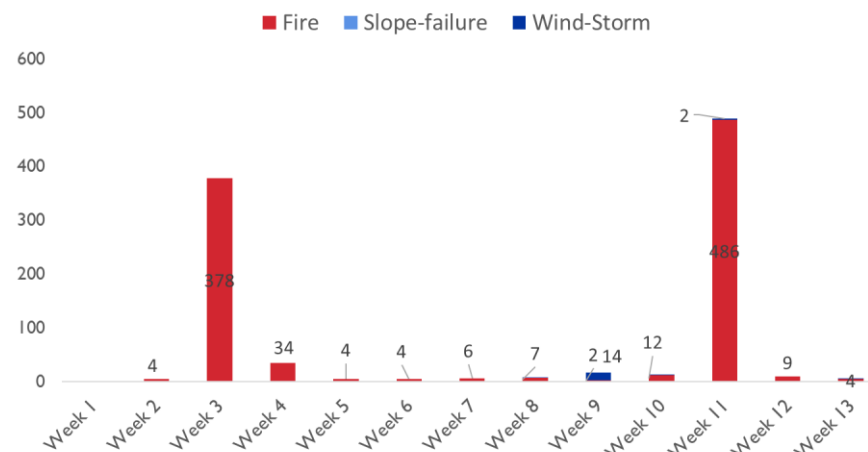
Between 1 January 2022 – 26 March 2022, a total of 86 incidents were recorded which affected 4,531 individuals (972 households). Out of them, 2,360 were displaced, 33 were injured. In total, 4 deaths and 0 missing individuals were reported.

- Fire affected the highest number of households (951), which was followed by Wind storm (19).
- In total, 830 shelters were fully damaged and 141 shelters were partially damaged. In addition, 2 health facilities, 44 water points, 115 latrines and 0 food distribution points were damaged.
- Camp 01E, 19, and Camp KRC were the camps where the largest proportion of incidents were reported.
- The highest number of affected individuals was recorded in Camp 05.
- A total of 82 incidents was managed with resources available, for 9 incident, sectoral/emergency response was needed, while 3 incidents said don't know.

### Incidents Trend by Week of the Year



### Number of Affected Households by Time



**Affected  
Population:  
208,699**

Individuals  
**44,613**  
Households



**Incidents: 1674**

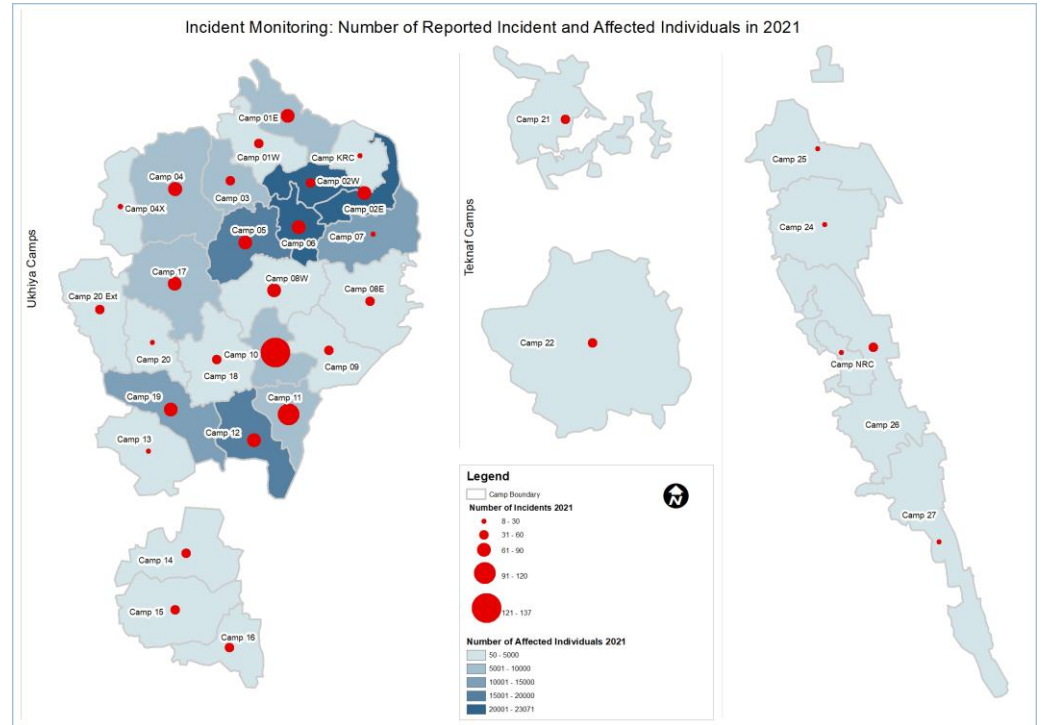
- 261** Slope Failure: 1327 HH
- 1108** Wind/Storm: 36082 HH
- 67** Flood: 6282 HH
- 150** Fire: 907 HH
- 5** Lightning: 4 HH
- 57** Traffic Accident: 4 HH
- 17** Drowning: 0 HH
- 4** Infrastructure Hazard: 2 HH
- 5** Other: 5 HH

**29486** displaced

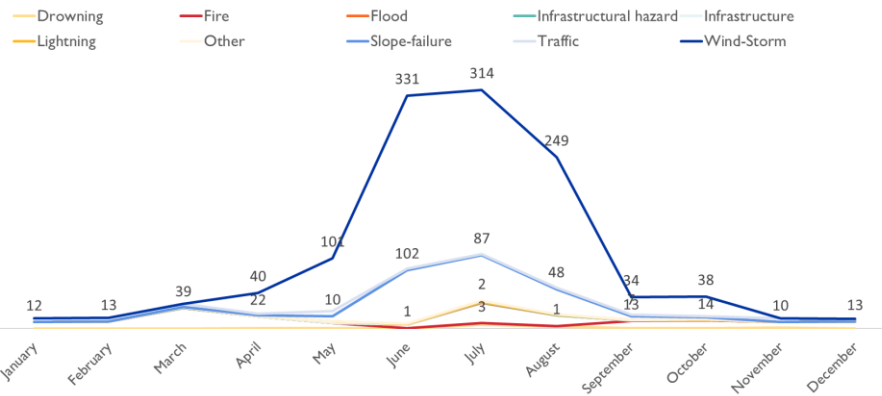
**142** injured

**41** dead

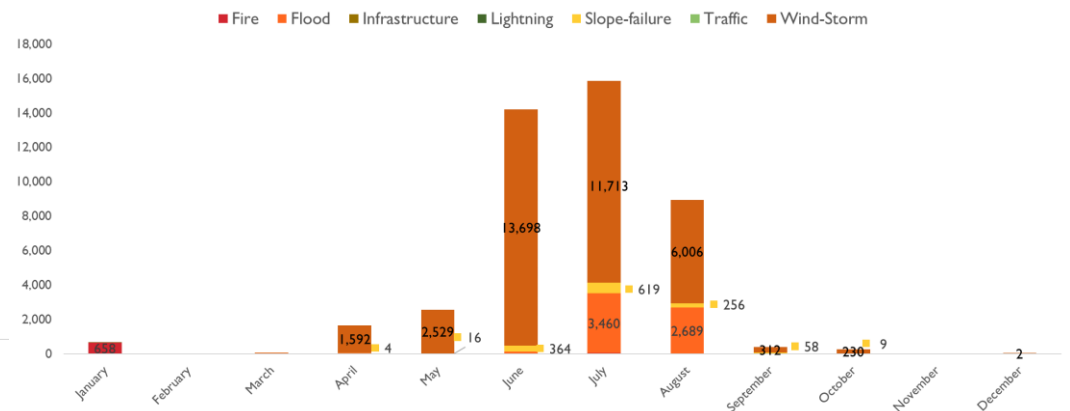
**0** missing



### Incidents Trend by Month



### Number of Affected Households by Time



### Number of Incidents by Camp

Camp	Number of Incidents									
	Slope failure	Wind/ Storm/ Rain	Flood	Lightning	Fire	Traffic Accidents	Drowning	Infra Hazard	Other	TOTAL
Camp 01E										
Camp 01W						1				1
Camp 02E										
Camp 02W										
Camp 03										
Camp 04										
Camp 04 Extension										
Camp 05										
Camp 06					1					1
Camp 07										
Camp 08E										
Camp 08W										
Camp 09										
Camp 10										
Camp 11					2					2
Camp 12										
Camp 13		1								1
Camp 14 (Hakimpara)										
Camp 15 (Jamtoli)						1				1
Camp 16 (Potibonia)										
Camp 17										
Camp 18										
Camp 19					1					1
Camp 20										
Camp 20 Extension										
Camp 21 (Chakmarkul)										
Camp 22 (Unchprang)										
Camp 23 (Shamlapur)										
Camp 24 (Leda)										
Camp 25 (Ali Khali)										
Camp 26 (Nayapara)										
Camp 27 (Jadimura)										
Kutupalong RC										
Nayapara RC										
<b>Total</b>	<b>0</b>	<b>1</b>	<b>0</b>	<b>0</b>	<b>4</b>	<b>2</b>	<b>0</b>	<b>0</b>	<b>0</b>	<b>7</b>

### Population Affected & Displaced by Camp

Camp	Number of Households Affected									Total Affected		Population Displaced	
	Slope failure	Wind/ Storm/ Rain	Flood	Lightning	Fire	Traffic Accidents	Drowning	Infra Hazard	Other	# HH	# ind.	# HH	# ind.
Camp 01E													
Camp 01W						0					1		
Camp 02E													
Camp 02W													
Camp 03													
Camp 04													
Camp 04 Extension													
Camp 05													
Camp 06					1					1	4		
Camp 07													
Camp 08E													
Camp 08W													
Camp 09													
Camp 10													
Camp 11					2					2	10		
Camp 12													
Camp 13		2								2	9	2	9
Camp 14 (Hakimpara)													
Camp 15 (Jamtoli)						0					1		
Camp 16 (Potibonia)													
Camp 17													
Camp 18													
Camp 19					1					1	4		
Camp 20													
Camp 20 Extension													
Camp 21 (Chakmarkul)													
Camp 22 (Unchiprang)													
Camp 23 (Shamlapur)													
Camp 24 (Leda)													
Camp 25 (Ali Khali)													
Camp 26 (Nayapara)													
Camp 27 (Jadimura)													
Kutupalong RC													
Nayapara RC													
<b>Total</b>	<b>0</b>	<b>2</b>	<b>0</b>	<b>0</b>	<b>4</b>	<b>0</b>	<b>0</b>	<b>0</b>	<b>0</b>	<b>6</b>	<b>29</b>	<b>2</b>	<b>9</b>