

SHELTER/NFI  
SECTOR

Cox's Bazar, Bangladesh



# Shelter/NFI Sector Meeting Fire response coordination

Date: 1st April 2021

Venue: online – MS Teams

# S/ NFI SECTOR COORDINATION TEAM



## LOCATION

Parjatan Luxury  
Cottage (1-3),  
2nd cottage, ISCG,  
Motel Road,  
Cox's Bazar,  
Bangladesh

### COORDINATOR

Karolina Brach  
+880 185 941 6931

[sheltercxb.coord@gmail.com](mailto:sheltercxb.coord@gmail.com)

### CO-COORDINATOR

Mazharul Islam  
+880 1713384043

[sheltercxb.coord1@gmail.com](mailto:sheltercxb.coord1@gmail.com)

### TECHNICAL COORDINATOR

Sneha Malani  
+880 185 9507940

[sheltercxb.tech1@gmail.com](mailto:sheltercxb.tech1@gmail.com)

### HLP COORDINATOR

Depika Sherchan  
+880 188 802 6754

[sheltercxb.hlp@gmail.com](mailto:sheltercxb.hlp@gmail.com)

### IM OFFICER

Brenda Chimanya  
+880 186 961 0231

[sheltercxb.im@gmail.com](mailto:sheltercxb.im@gmail.com)

### SECTOR ASSOCIATE

Bijoy Kumar Barua  
+880 181 805 9253

[sheltercxb.natassoc@gmail.com](mailto:sheltercxb.natassoc@gmail.com)

## WEBSITE

<https://www.humanitarianresponse.info/en/operations/bangladesh/shelter>

# Agenda

1. General updates from the fire response
2. Site planning for the camps affected by fire – IOM
3. Second Phase of the Shelter assistance
4. NFI clothes gap

# General updates on the fire response

A massive fire broke out in the Kutupalong mega camp on 22 March 2021. The fire started in Camp 8W at around 15:00 and later spread through camps 8E, 9 and 10. It is not clear how the fire started. 10 100 HHs were affected.

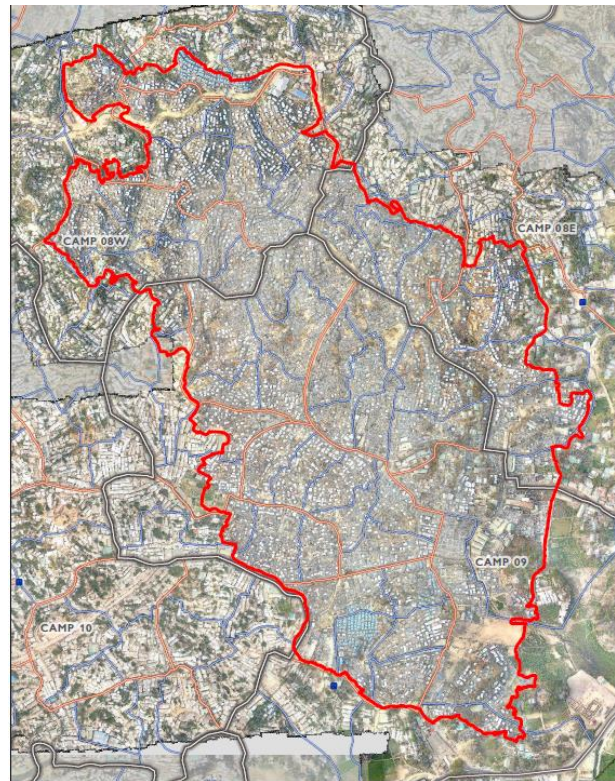
## JNA results:

### Infrastructure Damage:

- Camp 9- Every or nearly every (81-100%)
- Camp 8W- About half (41-60%)
- Camp 8E- Some (21-40%)

### Shelter Damage:

- Camp 9- Every or nearly every (81-100%)
- Camp 8W- About half (41-60%)
- Camp 8E- Some (21-40%)



# General updates on the fire response

## Phase 1 of the Emergency assistance:

Emergency Shelter/NFI kits consisted of 9 items:

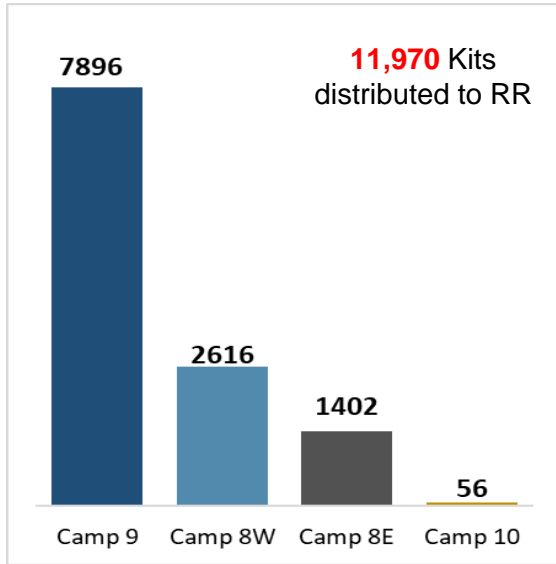
- Tarpaulin\*: 1 piece
- 6mm rope: 1 bundle
  - Muli: 3 pieces
- Floor mat: 2 pieces
- Blanket: 2 pieces
- Face mask: 3 pieces
- Mosquito net: 1 piece
- Solar light: 1 piece
- Sandbag / Jute bag: 3 piece

*\*1 tarpaulin and 1 mosquito net to each HH distributed on 23.03 and revised to 2 tarpaulins and 2 mosquito nets to each HH from 24.03 21.*

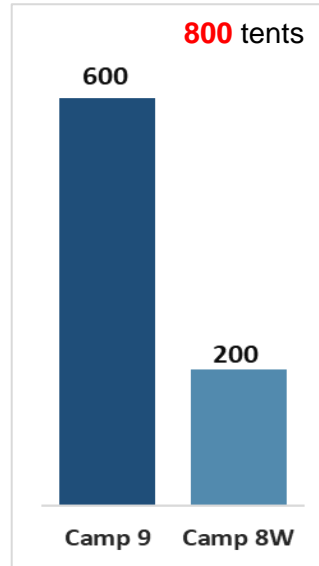
# General updates on the fire response

The distribution of the first phase of emergency Shelter/NFI kits has been completed across all affected areas.

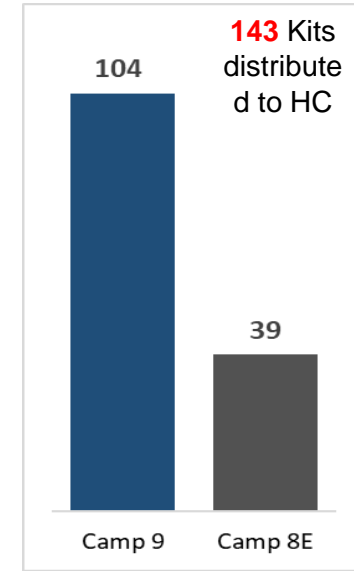
A total of 12,913 households were assisted with the shelter support as of March 31<sup>st</sup>



*Emergency Shelter/NFI kits distribution for Rohingya Refugees*



*Tents support from RRRC, implemented by BDRCS*



*Emergency Shelter/NFI kits Distribution for Bangladesh Host Communities living within camp area*

# General updates on the fire response

Distribution of Kitchen sets continue, **1,929** Kitchen sets have been distributed to affected Rohingya Refugees households in Camp 9. IOM is assisting all affected HHs with this assistance.

- Stainless Steel Bowl, 1 Litres (5)
- Stainless Steel Plates, 0.75 Litres (5)
- Stainless Steel Cups, 0.3 Litres (5)
- Stainless Steel Tablespoons (5)
- Stainless Steel Table Forks (5)
- Stainless Steel Scouring Pad (1)
- Serving Ladle, 100ml, Stainless Steel (1)
- Cooking utensils

LPG cylinder distribution has been approved by the CiCs and will be implemented along with the scope cards distribution.

# General updates on the fire response

Sector Partners mobilized 63 staff members from 13 organizations:

**Human Relief Foundation, NRC, EKATA, YPSA-HRF, BDRCS-IFRC, HEKS/EPER**

**CODEC, Caritas, DRC, Agrajatra, WC-MEDAIR, SCI, BRAC-UNHCR**

who supported IOM team with distribution as well as with technical assistance to beneficiaries.





# General updates on the fire response

## SECOND phase of the SNFI assistance

Emergency shelter packages distributed in cases of complete destruction was developed collectively with partners from the Shelter/NFI Technical Working Group (SNFI TWiG) and endorsed by SNFI SAG.

This is not the assistance which can be provided!

RRRC office is expected to **provide the approved template of shelter model to be used in conjunction with different block layouts being designed by the site planning teams.** This planning process is essential to promote a process of reconstruction based on the Build Back Safer objectives of sustainability, equity, and increased safety.

# IOM SITE PLANNING PRESENTATION

# Second phase of the Shelter assistance

Partners who declared capacity to support with the second phase of the shelter emergency response:

**IOM, CARITAS, MEDAIR, HEKS/EPER, AGRAJATRA, PULSE BANGLADESH, SCI+NRC, EKATA, QATAR CHARITY, AFAD, Turkish Dinayet Foundation, TIKA, WORLD VISION, BDRCS, SDI, Islamic relief Bangladesh, DCA**

With this capacity it already may be more than needed, so not every partner will be able to provide the assistance to the camps affected by fire. This assistance will be directed to other camps in need of shelter reinforcement.

# Second phase of the Shelter assistance

Government of the People's Republic of Bangladesh  
Office of the Refugee Relief and Repatriation Commissioner  
Cox's Bazar  
[www.rrrc.gov.bd](http://www.rrrc.gov.bd)

No: RRRRC/ISCG/letter-communication/2018- 990

Date: 31 March 2021

Sub: Coordination of shelter rebuilding in affected camps in recent fire.

In the context of the discussion with shelter sector and IOM, it is already decided that a few number of organizations will provide necessary assistance to rebuild the shelters in the fire affected camps. The concerned Camp-in-Charges, IOM and shelter sector will sit together with the interested NGOs to coordinate the site allocation, number of shelters and other necessary actions. This office will provide the structural design for the shelter authorized by the Ministry of Disaster Management & Relief very soon.

Thank you for your continued support.



31/3/2021  
Shah Rezwan Hayat  
(Additional Secretary)

Refugee Relief and Repatriation Commissioner  
E-mail: [contact@rrrc.gov.bd](mailto:contact@rrrc.gov.bd)

Mr. Manuel Marques Pereira  
Deputy Chief of Mission,  
IOM, Cox's Bazar.

# NFI CLOTHES and BEDDING PACKAGE

Group	Item 1	Item 2	Item 3	Item 4
Adult Male (Over 18)	2 x Lungi (250 to 400 BDT each)	2 x T-Shirts (120 to 150 BDT each)	1 x Plastic/Rubber/Sponge Slipper (60 to 100 BDT each)	-
Adult Female (Over 18)	2 X Thami (250 to 400 BDT each)	2 x blouse (34 size 1pc, 36 size 1 pc) (200 BDT each)	1 x Orna (scarf) (150 BDT each)	1 X Slipper – Plastic/Rubber/Sponge (75-120 BDT each)
Adolescent Boy and girl (12-17)	1 Lungi - (250 BDT each) 1 Thami - ( 250 BDT each)	2 x T-shirts (100 to 150 BDT each)	1 x Plastic/Rubber/Sponge Slipper (60 to 100 BDT each)	
Boy and Girl (6-11)	2 x Pants/Trouser (200 BDT each)	2 x T-Shirts (100 to 120 BDT each)	1 x Plastic/Rubber/Sponge Slipper (50 to 80 BDT each)	
Infant & toddlers (Boy/Girl) (1-5)	2 x Pants + 2 x t-shirts (available as a set) (180 BDT for each set)		1 x Plastic/Rubber/Sponge Slipper (50 to 80 BDT each)	
Pillow	2 pc			
bedsheet	2 pc			
Bag	Include 1 bag of appropriate size to hold the above contents of the package			

Notes: 1) For babies, 2 baby suit and 1 baby blanket to be available at separate counter if needed. Total requirement for baby clothes is approximately 1000 sets. Partners to contact Sector if they are able to procure any amount of the requirement.

# NFI CLOTHES GAP

Partners	Clothing	Bedding	Comments
SCI	3000	2500	500 currently being procured and 2500 will be procured later
Islamic Relief B.	1000	1000	NGO AB approval received
AMAN	706		Package is different – checking if it can be same package
Care			Tentative 1000 HH - will confirm next week
WVi	200	200	Confirmed 200 HH
Muslim Hands International	-	1428	Can combine 500 kits with SCI for bedding gap
BDRCS			will share numbers
Faith in Action	0	0	They are checking for their capacity
Relief Singapore			to still confirm if they can support/ support will be only with some items
Prantic	500	0	This package is not equal to sector package. FD 7 approved, Way forwarding for purchase (Package)for 8W
Ekata	0	0	Ekata is the implementing partner of Islamic Relief"s 1000 Package?
MSI	2500	0	Same as Prantic but they will align their package with Sector guided Package.
Total so far	7906	5128	

GAP around: 5200 clothes  
4972 bedding

# AOB