



## HEALTH CLUSTER BULLETIN # 06

1- 31 JUNE 2020



Floods effects at our operational areas: SMC

South Sudan      Emergency type: Complex Emergency



**3.3**  
MILLION

PEOPLE IN NEED  
OF HEALTH



**2.1**  
MILLION  
TARGETED



**1.82**  
MILLION  
SPLACED



**0.3**  
MILLION  
REFUGEES

### HIGHLIGHTS

#### Improving Health Access and Scaling up Responsiveness:

In June 2020, 3,354 normal deliveries were attended by skilled birth attendants.

As reported there were 401,812 outpatient consultations were conducted to treat different illness.

#### Prevent, detect and respond to epidemic prone disease outbreaks:

In June 2020 around 77% epidemic prone disease alerts were verified and responded to within 48 hours.

A total of 10,852 children (6 months to 15 years) were vaccinated against measles.

#### Quality Essential Clinical Health Services

In June 92 new Severe Acute Malnutrition (SAM) children with complications were treated in stabilization centres.

In June, 20 health facilities are reported providing sexual and gender based violence (SGBV) services and 51 SGBV survivors received clinical management of rape (CMR) services.

#### Improving Resilience- Mental Health Response:

399 beneficiaries received Mental Health and Psychosocial Support (MPHSS) in conflict affected areas.

There were 20 health facilities reported providing MPHSS services in vulnerability settings.

### HEALTH SECTOR



**60**

HEALTH CLUSTER PARTNERS EARMARKED IN HRP TO IMPLEMENT HEALTH RESPONSE

#### MEDICINES DELIVERED TO HEALTH FACILITIES/PARTNERS



ASSORTED EMERGENCY MEDICAL KITS (CORE PIPELINE)

#### HEALTH CLUSTER ACTIVITIES



**401,812**

OPD CONSULTATIONS

#### ROUTINE VACCINATION



**10,852**

CHILDREN (6-59 MONTHS) VACCINATED AGAINST MEASLES

#### EARLY WARNING ALERT AND RESPONSE NETWORK



EWARN SENTINEL SITES

#### FUNDING \$US

**120 M**

REQUESTED



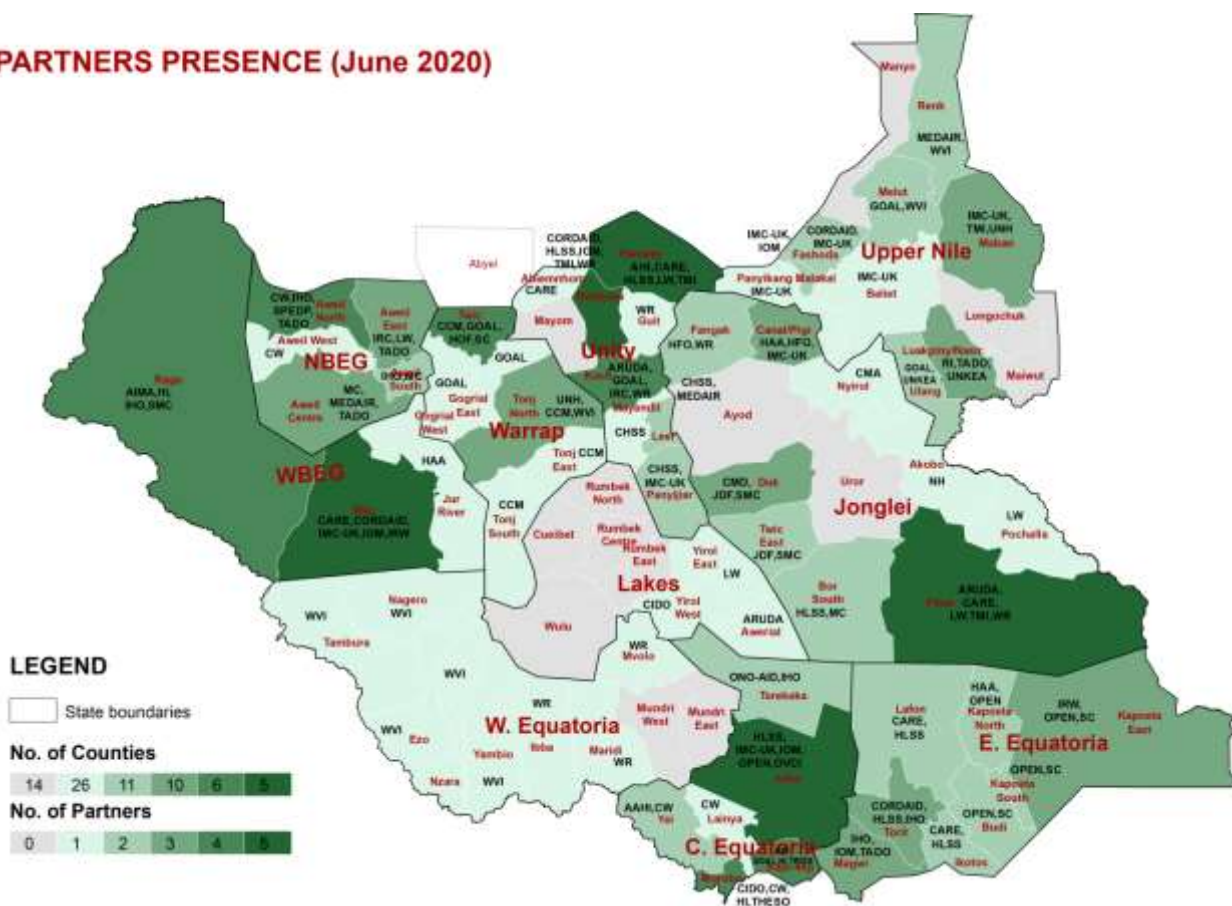
**9.3 M**

FUNDED

**11.7 M**

GAP

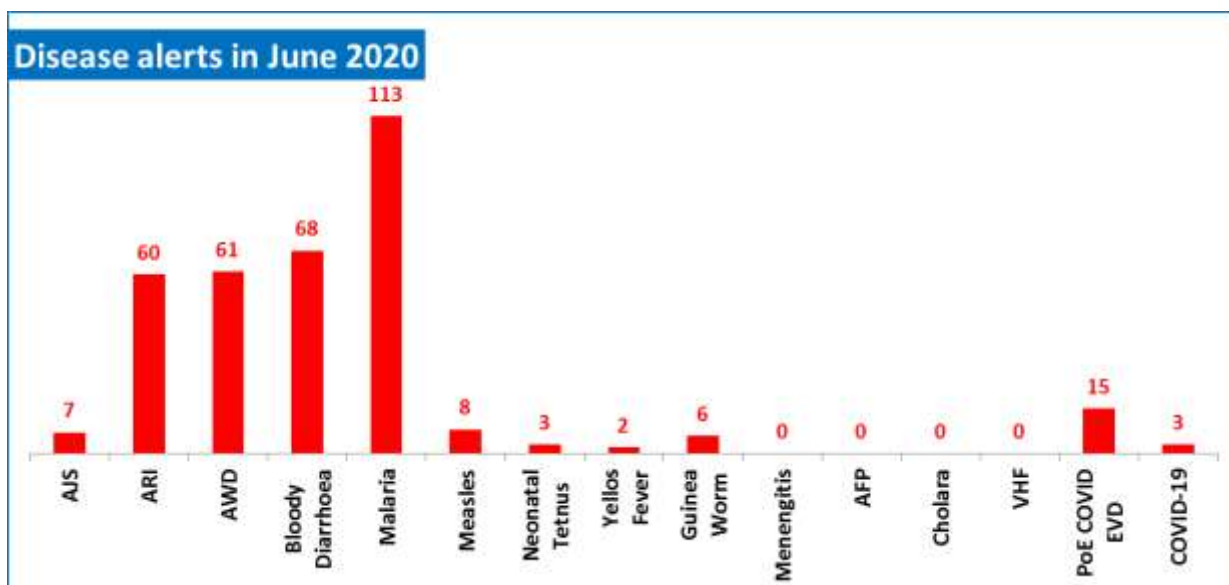
## PARTNERS PRESENCE (June 2020)



### Operational Presence of Partners

- According to 5W data submitted during January till June 2020, 46 HRP partners reported data at least once.
- During the year 2020 health cluster HRP partners covered 65 counties out of 79. There were 26 counties with single partner, 11 counties with 2 partners, 10 counties with 3 partners, 6 counties with 4 partners and 5 counties with 5 partners present.

### KEY CONTEXT UPDATE



## Public Health Risks and Key Gaps

- In May average weekly IDSR reporting completeness was 91% and timeliness was 70% at health facility level. EWARN average weekly reporting completeness was 91% and timeliness was 83%.
- Around 77% alerts were verified and responded back within 48 hours. 0% was risk assessed and 0% required a response.
- ARI (60), AWD (61), bloody diarrhoea (68), Malaria (113) and measles (8) remain the top disease for alerts in June 2020.
- There were 7 AJS alerts received in June as well.
- New measles cases confirmed in Wau and Bentiu PoC are being responded to through enhanced surveillance and routine immunization.
- A total of 562 COVID 19 alerts have been investigated with 465(82.7%) being verified.
- Total of 1930 COVID 19 confirmed cases and 36 deaths, CFR of 1.8%

## MEASLES OUTBREAK

- In 2020 Measles cases were confirmed in 6 counties which are Tonj East, Magwi, Bor, Kapoeta East and Tonj South,
- Locations with on-going measles transmission are Aweil East, Bentiu PoC, Wau County
- No new confirmed measles cases reported.

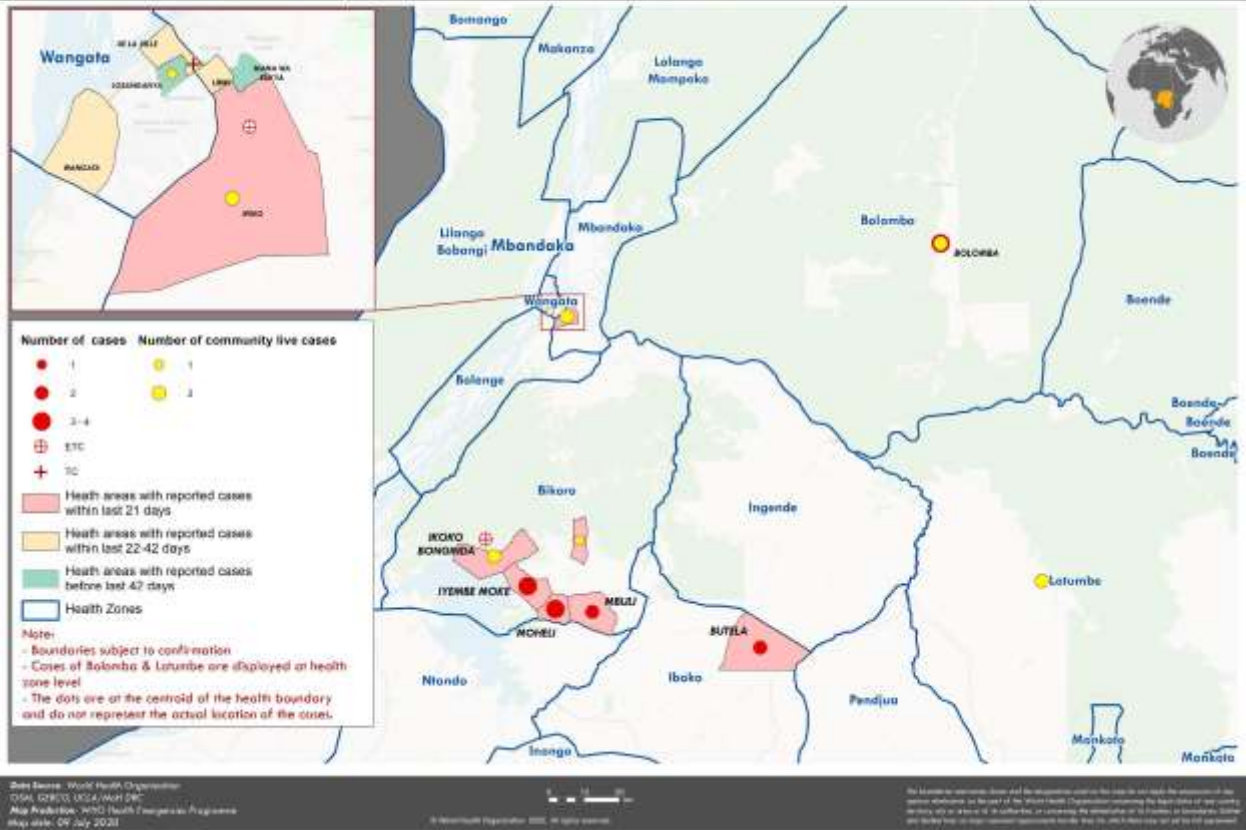
## EBOLA UPDATE DRC 8th July 2020

### Current Situation:

- 48 Cases [ 45 confirmed & 3 probable]
- 19 Deaths [ CFR: 41.35 ]

### Response update

- 7 newly confirmed cases reported on the 6th (2), 7th (3) and 8th (2) July including 2 new deaths among confirmed cases 1 community (Mbandaka), 1 ETC (Wangata).
- 2 health workers infected, 1 nosocomial infection; 5 cases discharged from ETC following 2 negative tests.



## COVID-19 PANDAMIC

### Global Situation updates *Total (new cases in last 24 hours)*

<b>Globally</b>	<b>9,843,073 cases (189,077)</b>	<b>495,760 deaths (4,612)</b>
<b>Africa</b>	278,815 cases (10,713)	5,785 deaths (112)
<b>Americas</b>	4,933,972 cases (117,178)	241,931 deaths 3,169)
<b>Eastern Mediterranean</b>	1,024,222 cases (17,943)	23,449 deaths (485)
<b>Europe</b>	2,656,437 cases (16,586)	196,541 deaths (352)
<b>South-East Asia</b>	735,854 cases (25.399)	20,621 deaths (482)
<b>Western pacific</b>	213,032 cases (1,258)	7,420 deaths (12)

*As of 28 June 2020*

### South Sudan Situation update (as of 28 June, 2020)

- 1930 confirmed COVID 19 cases in South Sudan; 85 % in Juba with 36 deaths and a case fatality rate (CFR) of 1.8 %. Total 4618 contacts identified, quarantined, & undergoing follow up
- Active surveillance is on-going to determine if there is active transmission in Juba and surrounding areas.
- The ILI/SARI sentinel sites have been expanded from 10 to 45 in Juba
- Implementation of priorities; risk communication; active case search and testing; quarantine for contacts; infection prevention and control; and management of cases are currently underway
- The overall response currently led by the COVID 19 high level taskforce and the COVID 19 steering committee

Figure 2. Distribution of confirmed COVID-19 cases (n=1 965\*)

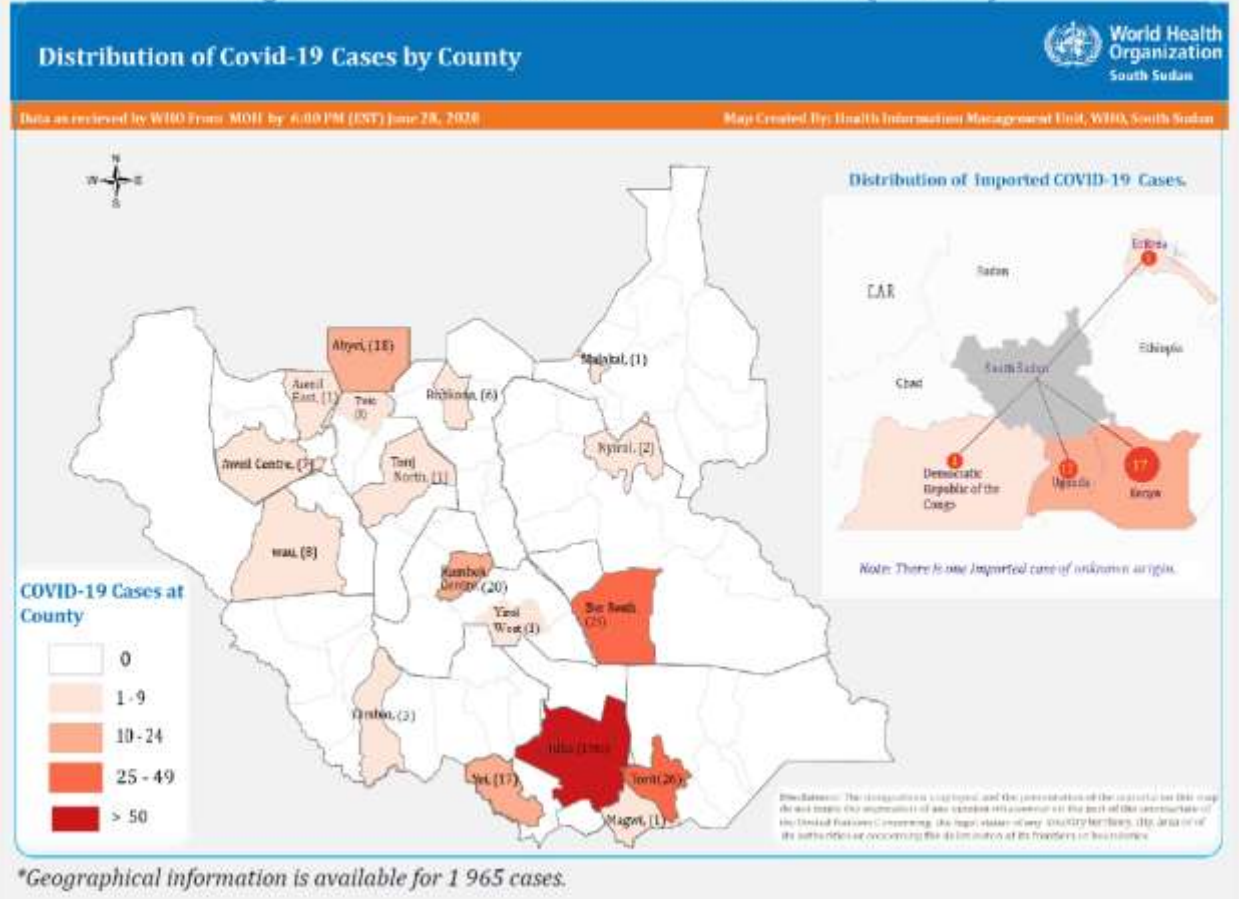
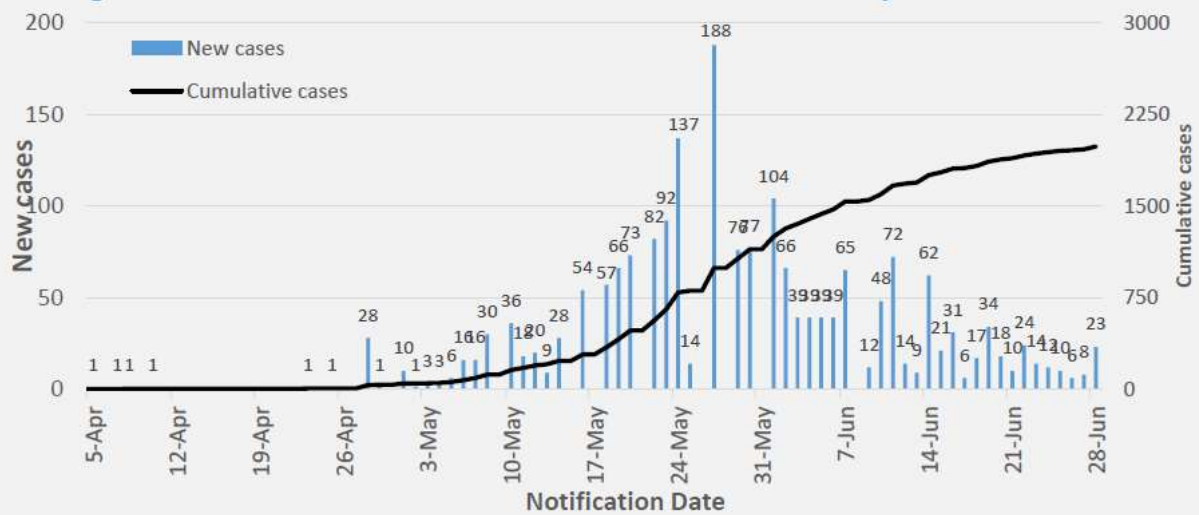


Figure 1. New and cumulative confirmed COVID-19 cases by notification date



Ms FITZPATRICK, Emma  
 Health Cluster Coordinator  
 Mobile: -----  
 Email : [fitzpatricke@who.int](mailto:fitzpatricke@who.int)

Mr. Irfan Sarwar Ghumman  
 IM Specialist  
 Mobile : + 211 925 817 718  
 Email: [ighumman@immap.org](mailto:ighumman@immap.org)