

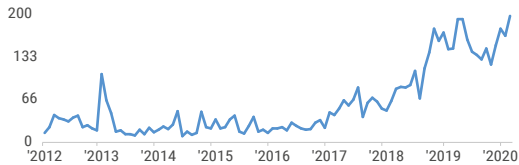


The humanitarian crisis in the border area of Mali, Burkina Faso and Niger is experiencing an unprecedented deterioration – with more than 3 million people severely food insecure due to rising insecurity and climatic shocks, at a time when the COVID-19 pandemic is spreading rapidly through the region. Central Sahel is home to some of the most fragile health systems in the world. Meanwhile, the unprecedented rise in armed violence is forcing people to flee their homes, and further deprives vulnerable communities' of critical services – including health care – as armed assailants directly target schools and health centres. In total, more than 4,000 schools and 241 health centres stopped functioning due to violence and insecurity. The number of internally displaced people has increased more than four-fold in one year to 1.2 million, in addition to 107,000 refugees. In densely populated areas such as displacement sites lacking adequate access to shelter, clean water, hygiene and basic sanitation, transmission risks are heightened. In highly vulnerable communities, the compounded impact of deteriorating conflict, peaking food insecurity and COVID-19 will be devastating. Prior to the outbreak, the number of people facing a critical lack of food was already expected to increase to 3.7 million during the lean season of 2020, a 110 per cent increase compared to last year. The closure of markets and borders meant to limit the spread of the pandemic will likely affect livelihoods and aggravate the situation. In 2020, 7.5 million people in the affected regions need urgent assistance. In support of national and local authorities, humanitarian partners are scaling up operations to save lives and alleviate human suffering while adapting their programmes to mitigate the spread of COVID-19. However, urgent further resources are needed. As of late April 2020, only 12 per cent of the US\$ 988 million required for the response was received.

INSECURITY

197 SECURITY INCIDENTS^{1,2} **871** PEOPLE KILLED^{1,2}

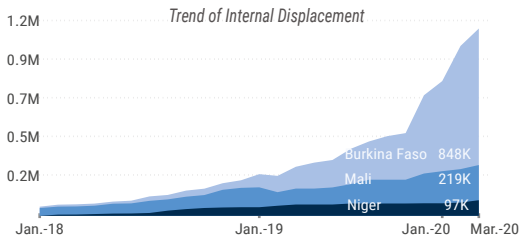
Trend of Security Situation



DISPLACEMENT

1.2M INTERNALLY DISPLACED PERSONS (IDPs)¹ **107K** REFUGEES

Trend of Internal Displacement



COVID-19 Entire country

1,717 CONFIRMED CASES **94** DEATHS

Trend of confirmed cases

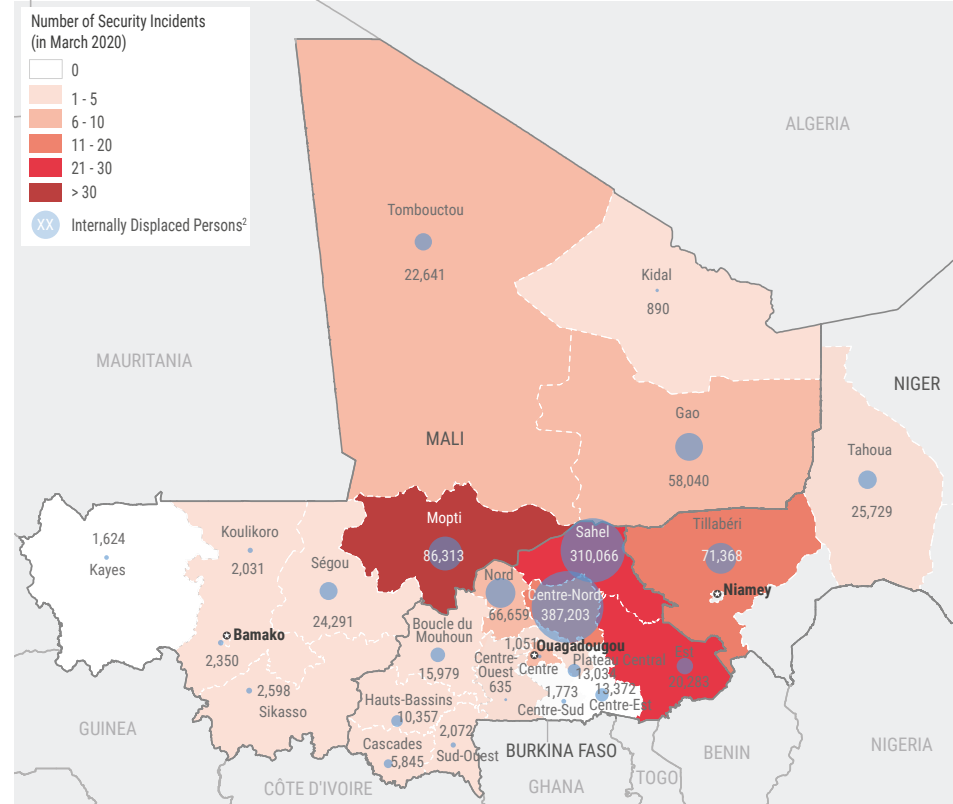
Niger 696
Mali 389
Burkina Faso 632



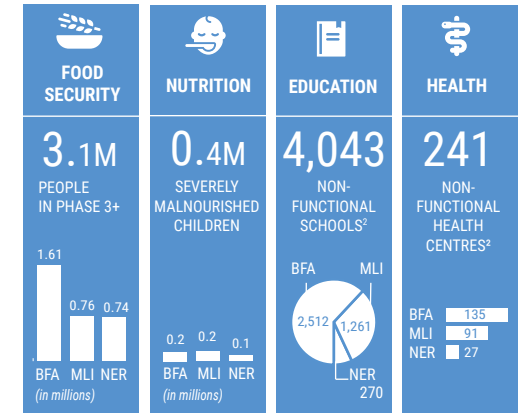
HUMANITARIAN SITUATION PER REGION

7.5M PEOPLE IN NEED **6.1M** PEOPLE TARGETED

Legend: Burkina Faso (light blue), Mali (dark blue), Niger (black)

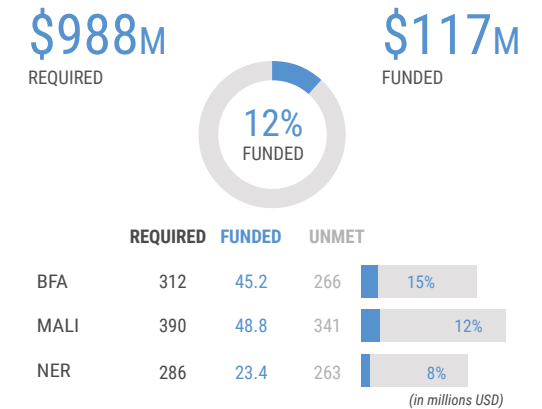


HUMANITARIAN SITUATION PER SECTOR



² Before COVID-19 pandemic BFA = Burkina Faso, MLI = Mali, NER = Niger

FUNDING - 2020 HUMANITARIAN RESPONSE PLANS



¹ As of April 2020 (Burkina Faso), March 2020 (Niger) and February 2020 (Mali).

The boundaries and names shown and the designations used on this map do not imply official endorsement or acceptance by the United Nations.

Sources: ACLED, CEIE WG, Cadre Harmonisé March 2020 - Current (January - May 2020), CMP, CONASUR, DTM, FTS, Government, OCHA Country Offices, Ministry of Education, UNHCR, UNICEF Contact: ocharowca@un.org www.unocha.org www.reliefweb.int