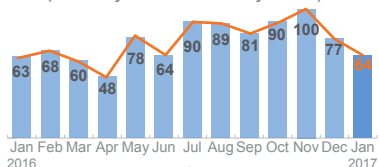




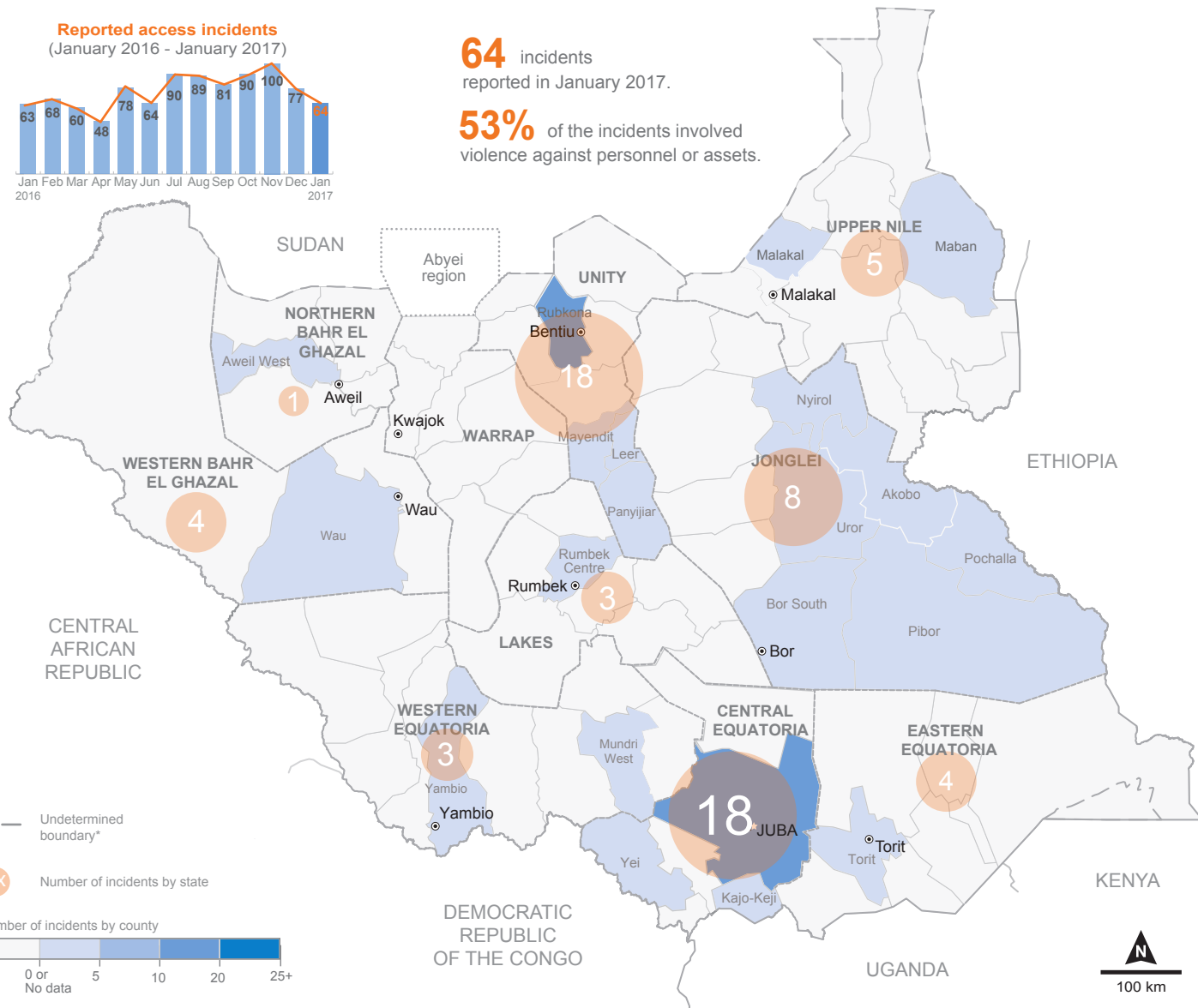
South Sudan: Humanitarian access situation snapshot - January 2017

In January 2017, there was a reduction in the number of humanitarian access incidents reported (64) compared with December 2016 (77). However, the impact on humanitarian operations was substantial, due to relocations of aid workers and suspension of operations in multiple locations. About 53 per cent of incidents reported involved violence against humanitarian personnel or assets. During the month, there were nine incidents involving restrictions of movement within the county, representing a significant increase from December 2016 when there were three cases. The majority of the incidents reported in January occurred in Central Equatoria and Unity, followed by Jonglei and Upper Nile. The number of incidents in Unity continued to rise with 18 reported in January compared to six and 15 incidents in November and December 2016, respectively.

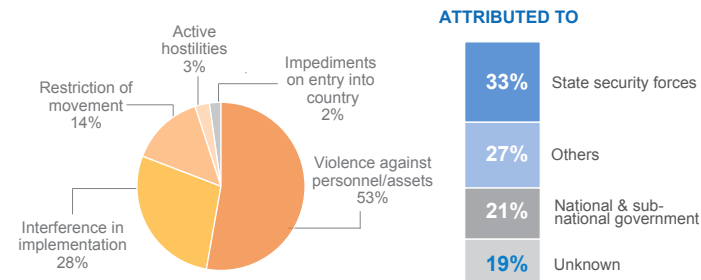
Reported access incidents (January 2016 - January 2017)



64 incidents reported in January 2017.
53% of the incidents involved violence against personnel or assets.



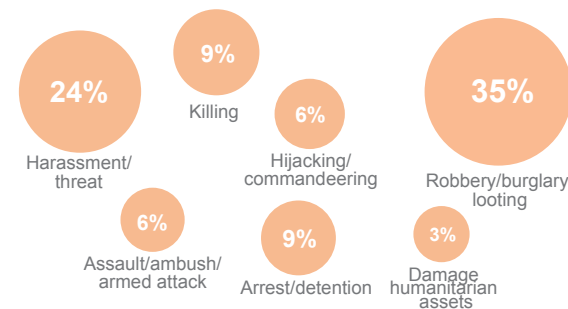
ACCESS CONSTRAINTS



IMPACT ON HUMANITARIAN RESPONSE

During the month, 16 aid workers were relocated from Wau Shilluk in Upper Nile due to fighting, and some 26 aid workers relocated from Panyijiar County in Unity, following a Government directive to partners to cease operations in the area. Aid workers were denied access to Greater Baggari area, outside of Wau town, on 26 January. However, following extensive negotiations, the team managed to travel to two locations in the Greater Baggari area on 27 January. Humanitarian access to Wau Shilluk was disrupted by active conflict, and aid workers were denied access to Bangolo and Kotobi in Western Equatoria, and Lokiliri in Central Equatoria. Food aid drops were postponed and passenger flights to Bentiu cancelled due to lack of flight safety assurances from the authorities on 30-31 January. Three aid workers were killed in January, including a driver who died in an armed ambush on a convoy carrying aid supplies near Bentiu town.

Violence against personnel and assets



- 3 humanitarian staff killed.
- 2 cases of hijacking/commandeering.
- 4 cases of assault/ambush/armed attack.
- 12 attempted/completed robbery/burglary/looting cases.