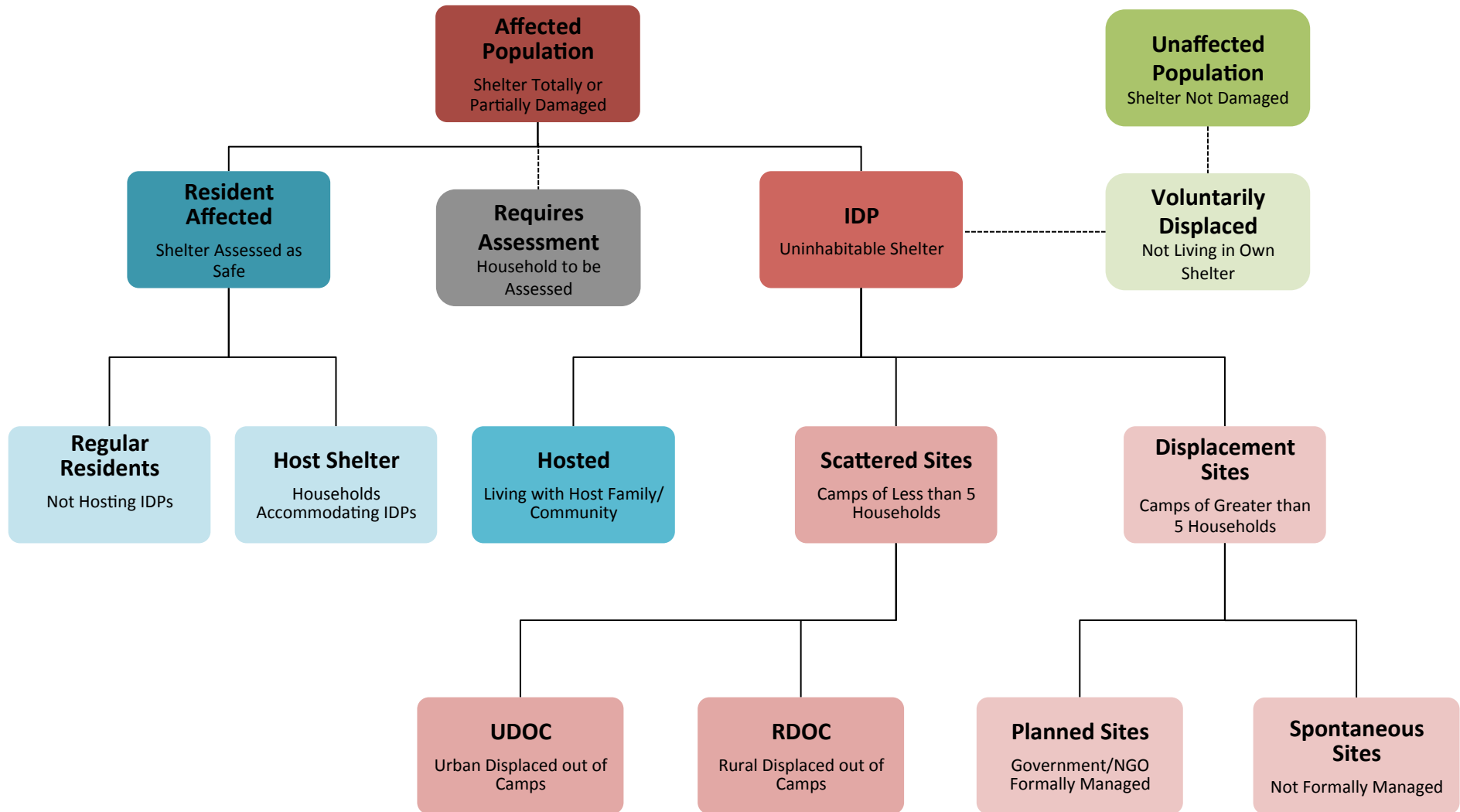


Humanitarian Profile - DRAFT

The Humanitarian Profile categorizes the affected population within a humanitarian response. The purpose is to eventually provide numbers that facilitate planning and response. As such, the categories are mutually exclusive and each category has unique needs. In this profile, the defining variable is shelter; whilst many other factors may influence needs, the shelter condition and availability are the most representative proxies of displacement and needs following the earthquake.



Notes:

The Profile does not capture the mobile population; that is, the immigration and emigration between Kathmandu Valley, the districts, as well as internationally. This movement is likely to be short-term and difficult to capture. The numbers could be substantial, as evident by a recent Flowminder study into cellular tracking, as well as local media and government sources. At the moment this figure is dynamic however it is expected to shortly stabilize and eventually return to equilibrium.