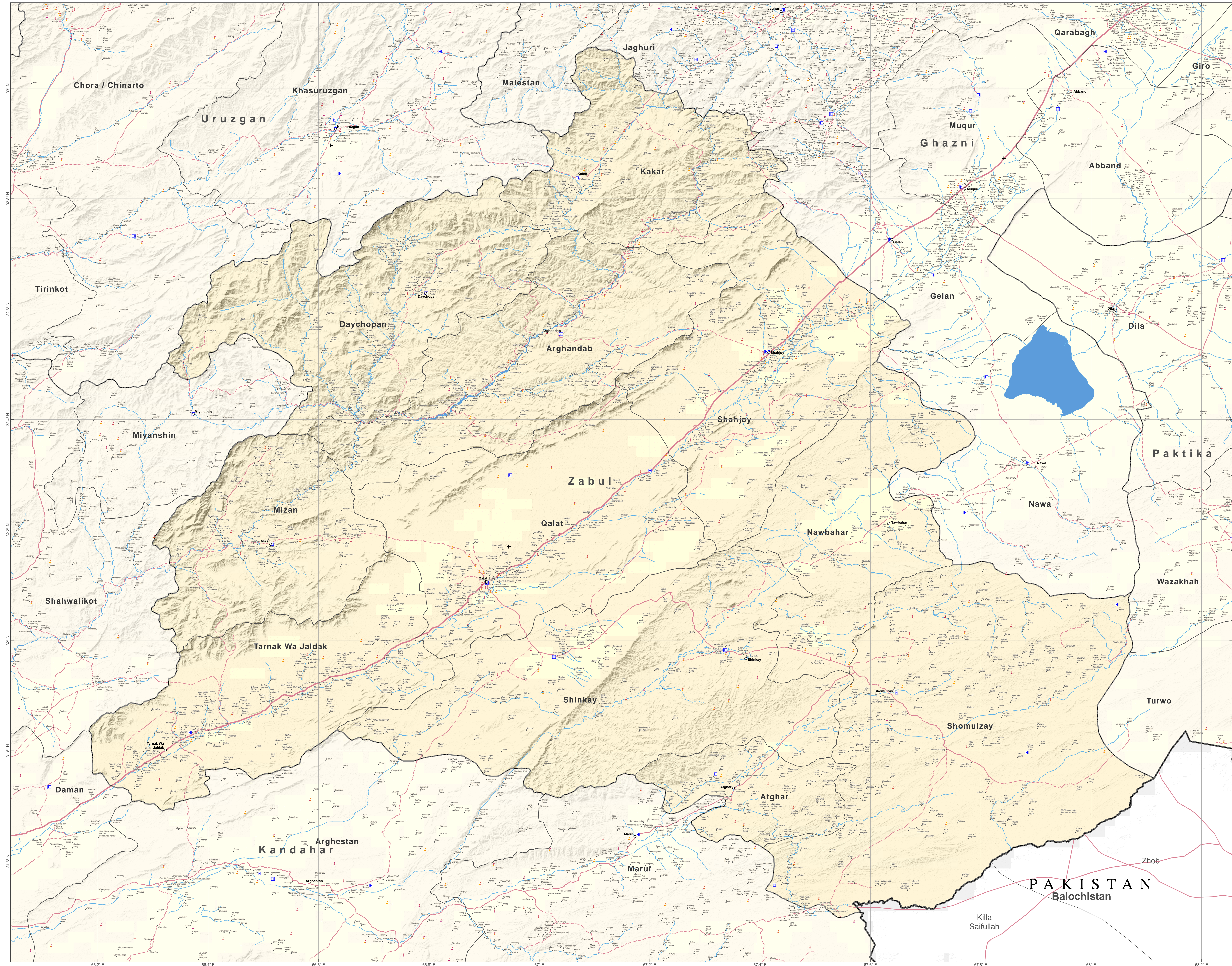


Zabul Province - Reference Map



Legend

- Capital
- Provincial Center
- District Center
- Village

Administrative Boundaries

- International
- Province
- District

Transportation

- Primary Road
- Secondary Road
- Other Road

- Airport
- Airfield

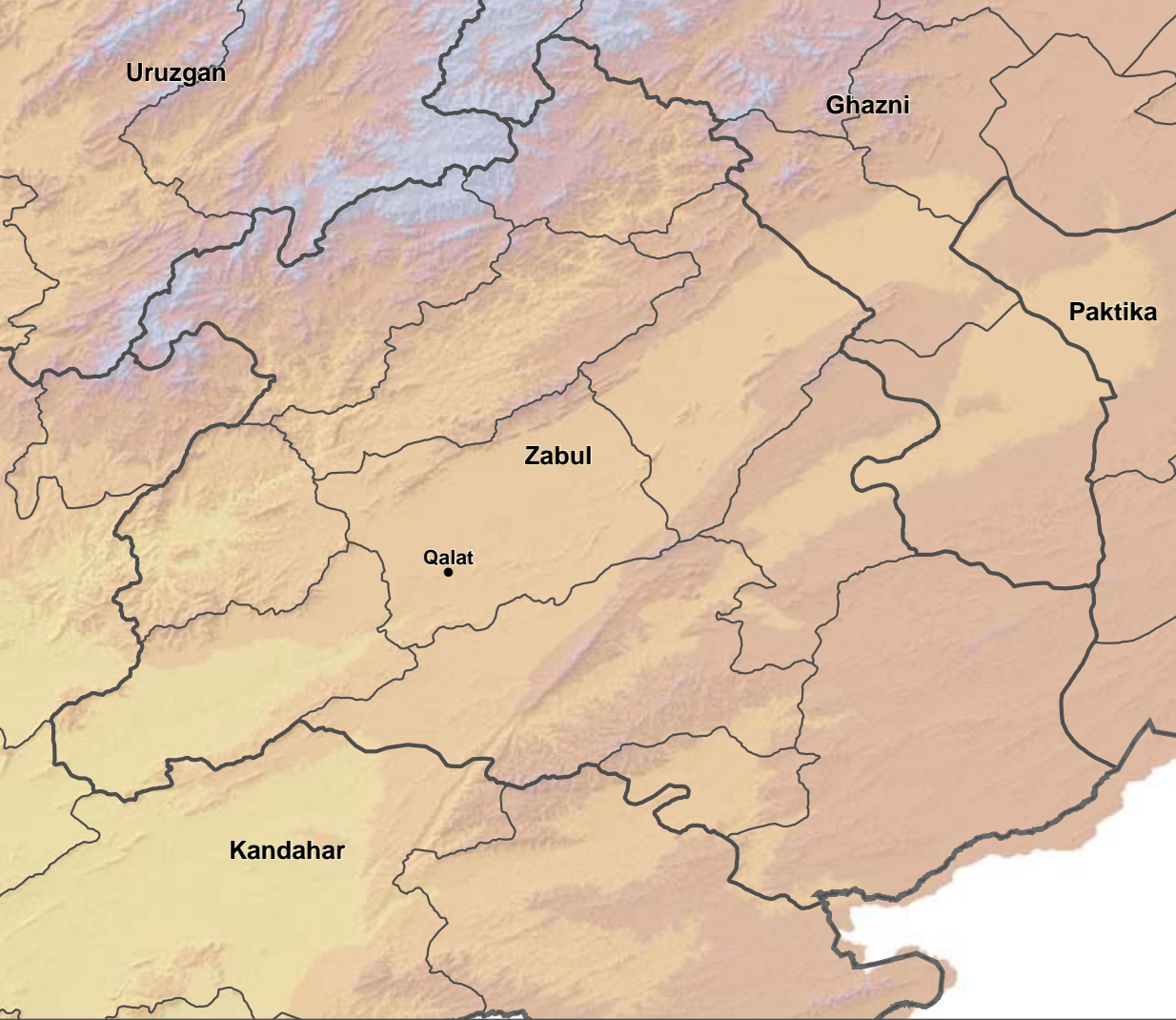
- River/Lake
- River/Stream

- Hospital
- Other health facilities
- Schools

Elevation (meter)

- > 5000
- 4,001 - 5,000
- 3,001 - 4,000
- 2,501 - 3,000
- 2,001 - 2,500
- 1,501 - 2,000
- 1,001 - 1,500
- 801 - 1,000
- 601 - 800
- 401 - 600
- < 400

Elevation



Locality Map



0 10 20 30 kms

Scale (at A0) 1:250,000

Date Printed: 19 February 2014 04:09 PM

Data Source(s):

AGCHO, CSO, AIMS, SRTM GDEM, MISTI

Schools - Ministry of Education

Health Facilities - Ministry of Health

Projection/Datum: Geographic/WGS-84

Disclaimers:

The designations employed and the presentation of material on this map do not imply the expression of any opinion whatsoever on the part of the Secretariat of the United Nations concerning the legal status of any country, territory, city or area or of its authorities, or concerning the delimitation of its frontiers or boundaries.

Doc Name:

Province_Reference_Map_DD_20140209FEB09_A0

Feedback: ocha.imu.afg@gmail.com

Website: <http://afg.humanitarianresponse.info/>